



Luxury Basement Extension, South London

Waterproofing a Below-Ground Swimming Pool & Wine Cellar

The Project

At this private property in South London, the plan was to build a new basement extending below the entire footprint of the house and into the rear garden, incorporating a swimming pool, recreational spaces and wine cellar.

However, considering the close proximity to the River Thames and the high water table, Newton Specialist Contractor [Stonehouse](#) were called in to provide a complete waterproofing system for the entire structure.

The Solution

Considering the size of the basement area, the high water table, the geographical location close to the River Thames, and the fact that the structure was created using underpinning, the risk of water penetration in this basement was extremely high. Stonehouse therefore recommended the most failsafe solution, the [Newton CDM System](#).

Firstly, they installed [Newton 508](#) membrane to all internal walls, as well as the floor, using Newton's [ancillary](#) products to fix the membrane securely and seal the system.

Drainage channels were also created using [Newton Basedrain](#), feeding into a sump chamber containing two [NP750 pumps](#), a higher capacity model capable of dealing with large volumes of [water](#).

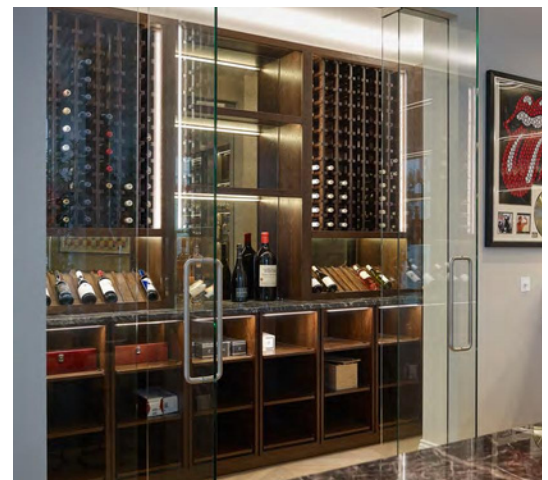
Finally, where the basement extended beyond the footprint of the house, a [liquid waterproofing membrane](#) was used on the new external roof.

The Result

Stonehouse are one of Newton's oldest and most experienced specialist contractors, and they showed their expertise here by delivering a dry, safe basement for the client that could then be transformed into a beautiful new part of their home. Furthermore, the installation was backed by Stonehouse's 10-year guarantee, for complete peace of mind.



The front of the beautiful residential property.



The high-end basement included its own wine cellar.



“At every phase of this project, we were aware of the presence of the River Thames. Water permeated throughout the excavation and it was essential that the waterproofing of this substantial basement which extends beyond the footprint under the garden was reliable and robust.

Stonehouse has worked on over 50 projects with this architect, always using Newton products with our work matching in both quality and craftsmanship.”

Graham Stone, Managing Director, Stonehouse

The Products

CDM SYSTEM

The most reliable waterproofing solution for any habitable space below ground, the Newton CDM System combines our decades of waterproofing experience with the highest quality, BBA certified cavity drain membranes from [Newton System 500](#), bespoke sump and pump configurations, backup systems, telemetry and ancillary options.

508

BBA certified, high quality cavity drain membranes as part of the CDM System, manufactured from 100% recycled HDPE.

SYSTEM 500 ANCILLARIES

A selection of specialist ancillary products that are critically important for the correct installation of the Newton CDM System, including plugs, tapes and seals.

BASEDRAIN

A range of products that collectively receive and drain water from the cavity drain membranes and direct it to the point of discharge.

NP750 PUMPS

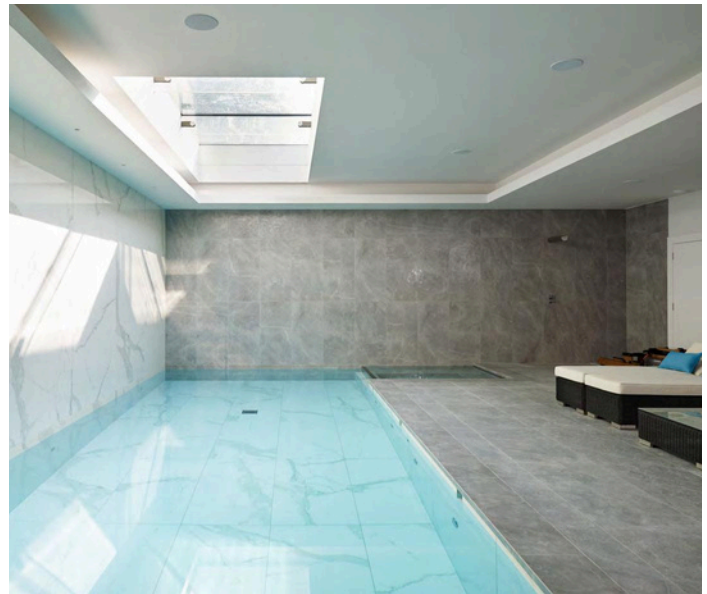
A high-capacity pump available in both automatic and manual versions. The NP750 is a high performance pump for ground and clean water, most commonly used as a key component within the Newton CDM System.

LIQUID WATERPROOFING MEMBRANES

A comprehensive portfolio of liquid applied membranes for all substrates and all applications, ranging from very flexible liquid rubber products through to hard wearing and resilient cementitious membranes.



The largest basement area also has a living room and games room.



A private below-ground swimming pool finished off the project.



The luxury basement was finished to an extremely high standard.

Newton Specialist Basement Contractors

Newton recommends that our systems are installed by one of our nationwide network of Newton Specialist Basement Contractors (NSBCs). Trained by Newton, NSBCs offer a full guarantee on the design and installation, and can act as Waterproofing Design Specialists.



www.newtonwaterproofing.co.uk



tech@newtonwaterproofing.co.uk



+44 (0)1732 360 095