



## Hammerson House Care Home, Hampstead Waterproofing a 116-Bed Residential Centre in London

### The Project

Hammerson House will be a world class, 116-bed residential centre for the elderly Jewish Community in Hampstead. The multi-million pound development offers holistic, compassionate, respite and end of life care in a safe, stimulating environment, designed around the principle of 'households' – clusters of bedrooms with supporting facilities on a domestic scale.

NSBC [Cast Contracting Ltd](#) (CCL) were approached by main contractors [Bowmer and Kirkland](#), and [P+HS Architects](#) during the planning stages, to develop a comprehensive waterproofing solution for the extensive basement.

### The Solution

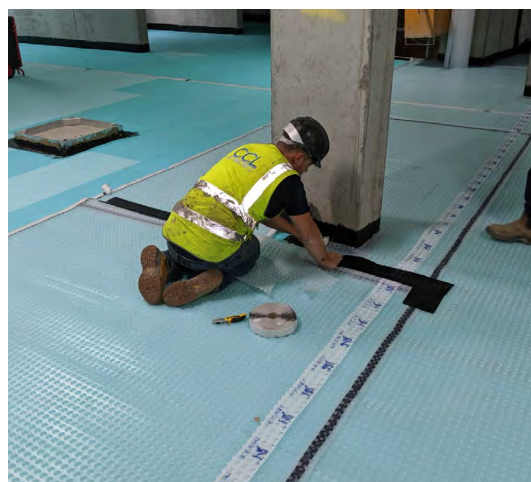
CCL recommended the installation of a [Newton CDM](#) water management system to comprehensively waterproof the extensive basement. First, they employed the 8mm [Newton 508](#) membrane to the concrete retaining walls of the basement. The 50mm thick [Fibran XPS 500-C](#) insulation was then installed beneath more 508 membrane across the entire concrete slab. Additionally, [Basedrain](#) drainage channel was installed around perimeter, including inspection ports to provide a fully maintainable system.

This entire system is served by a series of complete sump and pump systems, each consisting of primary and backup [NP400 pumps](#), [high water level alarms](#), and [battery backup systems](#). These are all controlled by Newton's advanced [Control Panel-Pro](#) to ensure a failsafe system, even during a power outage.

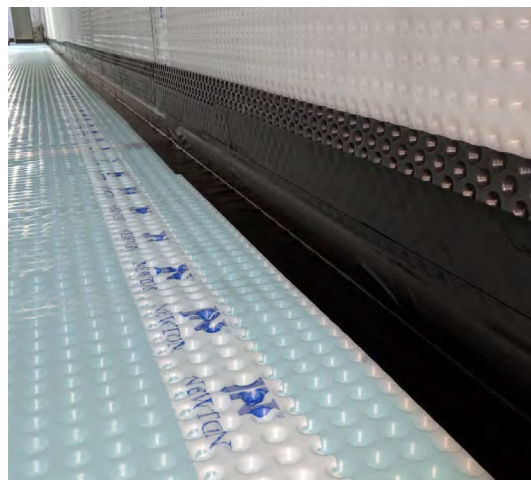
Finally, [Newton's 107F](#) cementitious waterproof membrane was spray applied to the concrete upstands of the lightwells and lift pits in order to complete the continuous watertight solution.

### The Result

By combining multiple types of specialist product from Newton, CCL were able to deliver a comprehensive waterproofing solution to the client, compliant with British Standards, and fully supported by an installation guarantee.



CCL's trained specialist installers fitted the products.



The wall/floor junction is sealed with Newton OverTape.



"The team at CCL worked closely with the Bowmer & Kirkland site team to install a comprehensive waterproofing solution to the large basement floor, including lift pits and plant areas.

The time critical waterproofing works were carried out to a professional standard and ready for handover to the floor screeders in line with our programme."

Simon Green, Senior Site Manager  
Bowmer & Kirkland

## The Products

### CDM SYSTEM

The most reliable waterproofing solution for any habitable space below ground, the Newton CDM System combines our decades of waterproofing experience with the highest quality products.

This includes BBA certified cavity drain membranes from [Newton System 500](#), bespoke sump and pump configurations, backup systems, telemetry and ancillary options, depending on the nature of the project and the client's requirements.

### BASEDRAIN

A range of products that collectively receive and drain water from the cavity drain membranes and discharge the collected water to a Newton Sump System or safe drainage.

### FIBRAN XPS 500-C

50mm, closed-cell extruded polystyrene insulation board, exclusive to Newton and used to form a 50mm spacer alongside Newton Basedrain.

### NP400 PUMPS

A high performance pump available in either manual or automatic versions to remove clean water from the Newton CDM System.

### CONTROL PANEL-PRO

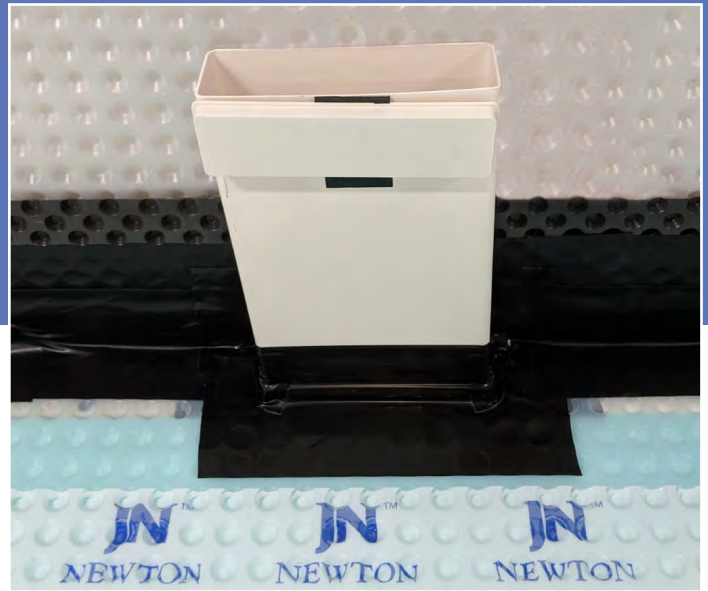
A class-leading pump control panel, designed by Newton with many unique features to provide the ultimate in basement pump operation and diagnostics.

### 107F

Cementitious, flexible waterproof membrane suitable for the protection of concrete and masonry, and can be spray applied, making it ideal for larger projects.

## Newton Specialist Basement Contractors

Newton recommends that our systems are installed by one of our nationwide network of Newton Specialist Basement Contractors (NSBCs). Trained by Newton, NSBCs offer a full guarantee on the design and installation, and can act as Waterproofing Design Specialists.



The inspection ports ensure that the CDM System is maintainable.



The full installation was an extensive basement waterproofing system.



Newton's unique recycling service collected all plastic waste from site.

