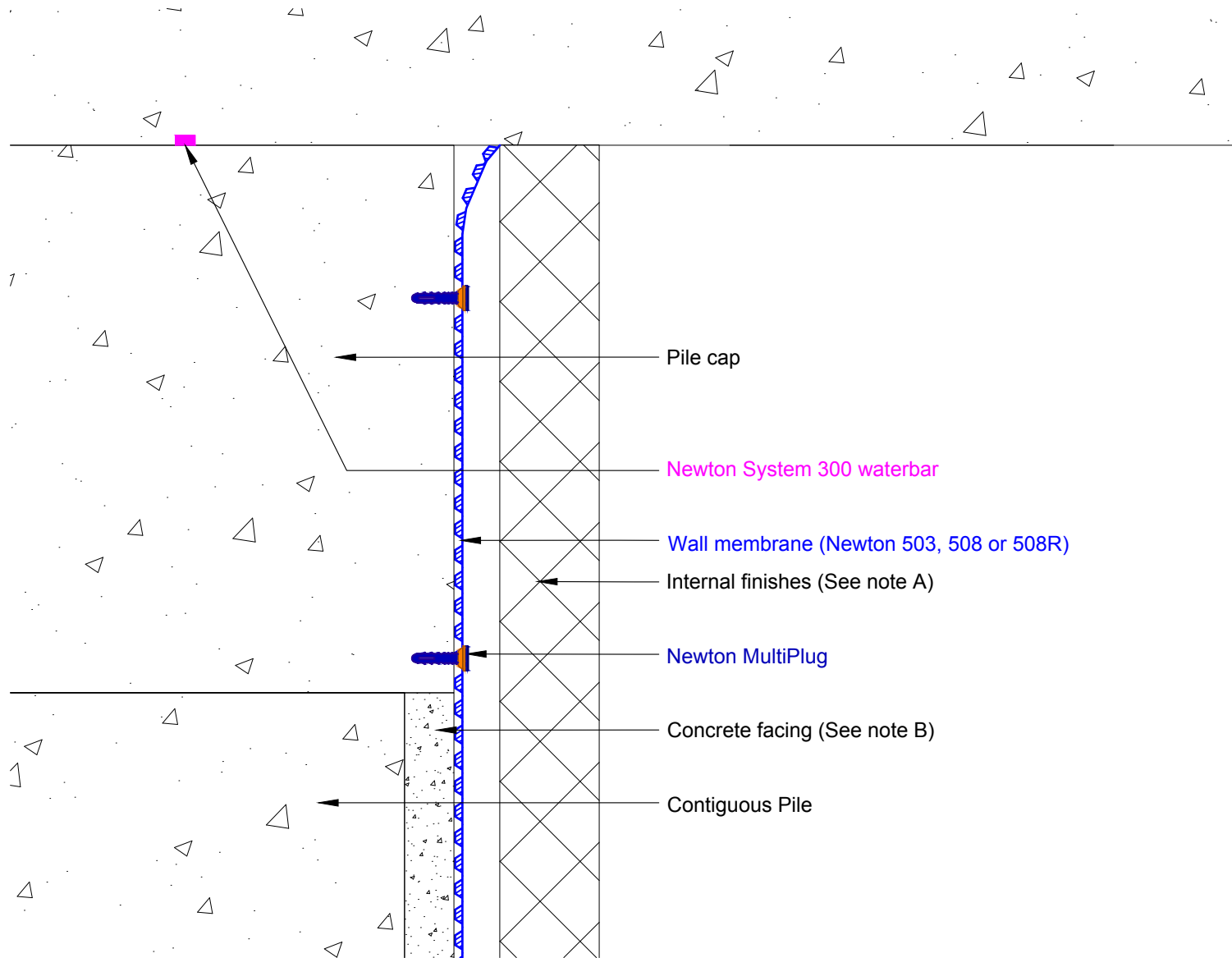


Section

DO NOT SCALE

Notes



Pile cap

Newton System 300 waterbar

Wall membrane (Newton 503, 508 or 508R)

Internal finishes (See note A)

Newton MultiPlug

Concrete facing (See note B)

Contiguous Pile

This detail shows the termination of Newton CDM System in front of Contiguous piles.

A) For System 500 Cavity drain detailing & internal finishes options please see drawings prefixed CDM-SA & CDM-SW.

B) Concrete piles faced to provide a continuous, uniform surface, which is designed by a structural engineer to be structurally capable of withstanding the water pressures in accordance with the recommendation of BS8102:2009.

Newton Waterproofing Systems can assist with the design of the concrete facing, please contact the Newton technical department for further information.

To access further details and relevant technical information please call our Technical Team on 01732 360095 or refer to our [website](#).

Newton CDM System

Contiguous piling

Drawing 1 of 2 Detailing capping beam

NOTE: This is a Newton waterproofing detail and copyright remains with John Newton & Co. Ltd. (trading as Newton Waterproofing Systems). Any specification/advice provided is only valid if used with products supplied by John Newton & Co. Ltd. For the design of the structure, please use a professional designer. We recommend that Newtons' waterproofing systems are installed by our NSBC registered contractors who can offer insurance backed guarantees and accept liability for both the design and installation of our systems. Please refer to product data sheets before installation of our products. Newton Waterproofing Systems reserve the right to update drawings and product literature at any time.

Plan

DO NOT SCALE

Notes

This detail shows the fixing of the Newton CDM System Wall membrane in front of Contiguous piles.

A) For System 500 Cavity drain detailing & internal finishes options please see drawings prefixed CDM-SA & CDM-SW.

B) Concrete piles faced to provide a continuous, uniform surface, which is designed by a structural engineer to be structurally capable of withstanding the water pressures in accordance with the recommendation of BS8102:2009.

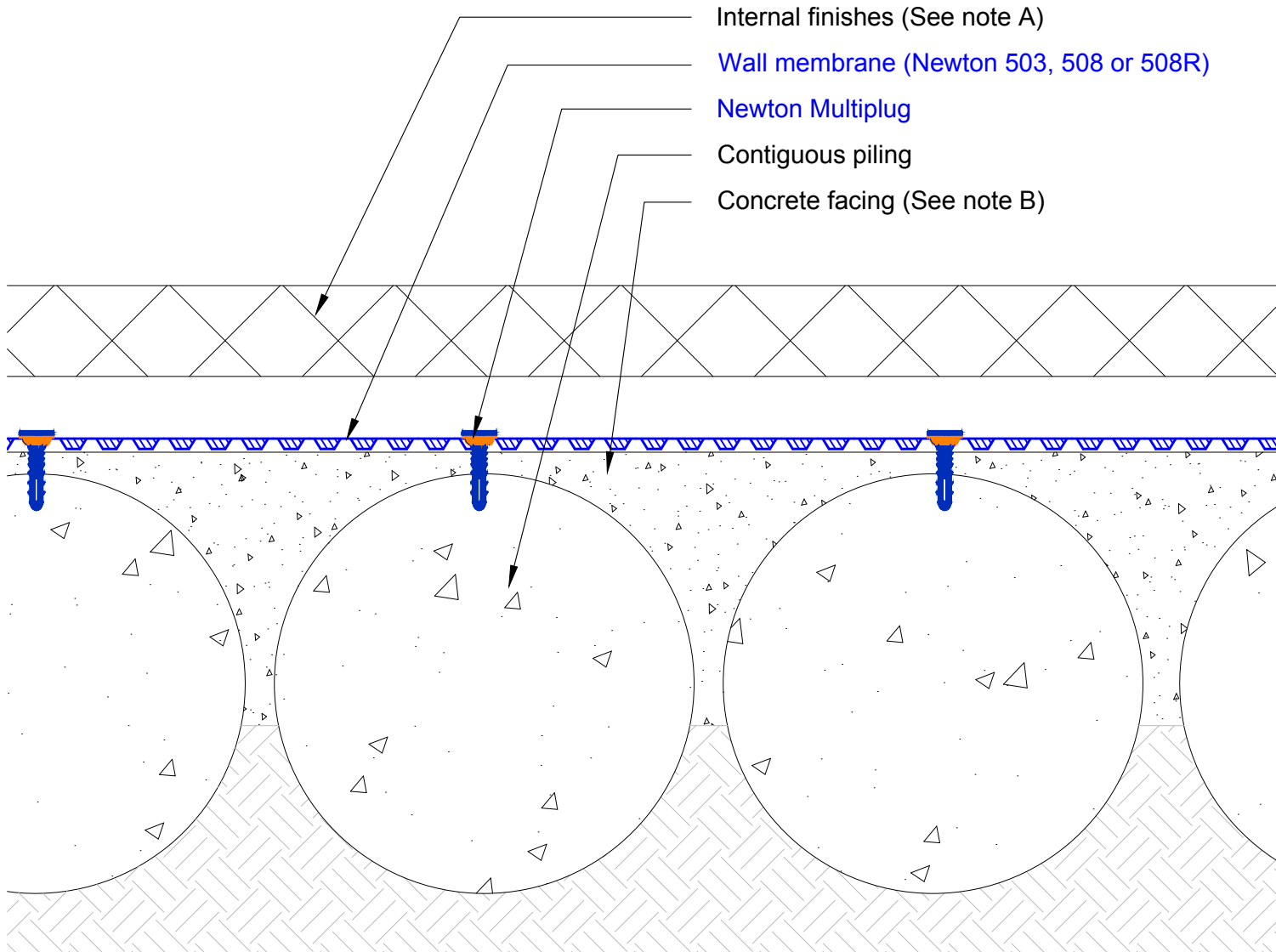
Newton Waterproofing Systems can assist with the design of the concrete facing, please contact the Newton technical department for further information.

To access further details and relevant technical information please call our Technical Team on 01732 360095 or refer to our [website](#).

Newton CDM System

Contiguous piling

Drawing 2 of 2 Plan showing typical fixing of Wall membrane



NOTE: This is a Newton waterproofing detail and copyright remains with John Newton & Co. Ltd. (trading as Newton Waterproofing Systems). Any specification/advice provided is only valid if used with products supplied by John Newton & Co. Ltd. For the design of the structure, please use a professional designer. We recommend that Newtons' waterproofing systems are installed by our NSBC registered contractors who can offer insurance backed guarantees and accept liability for both the design and installation of our systems. Please refer to product data sheets before installation of our products. Newton Waterproofing Systems reserve the right to update drawings and product literature at any time.

| | | | |
|-----------------------|----------------------------------|--------------------|-----------------------|
| Scale Not to Scale | Drawing Reference CDM-CONT-02 | Original Reference | Drawing Revision b |
| Date 06/03/2018 | Designed by DGB | Drawn by CER | Checked by DGB |