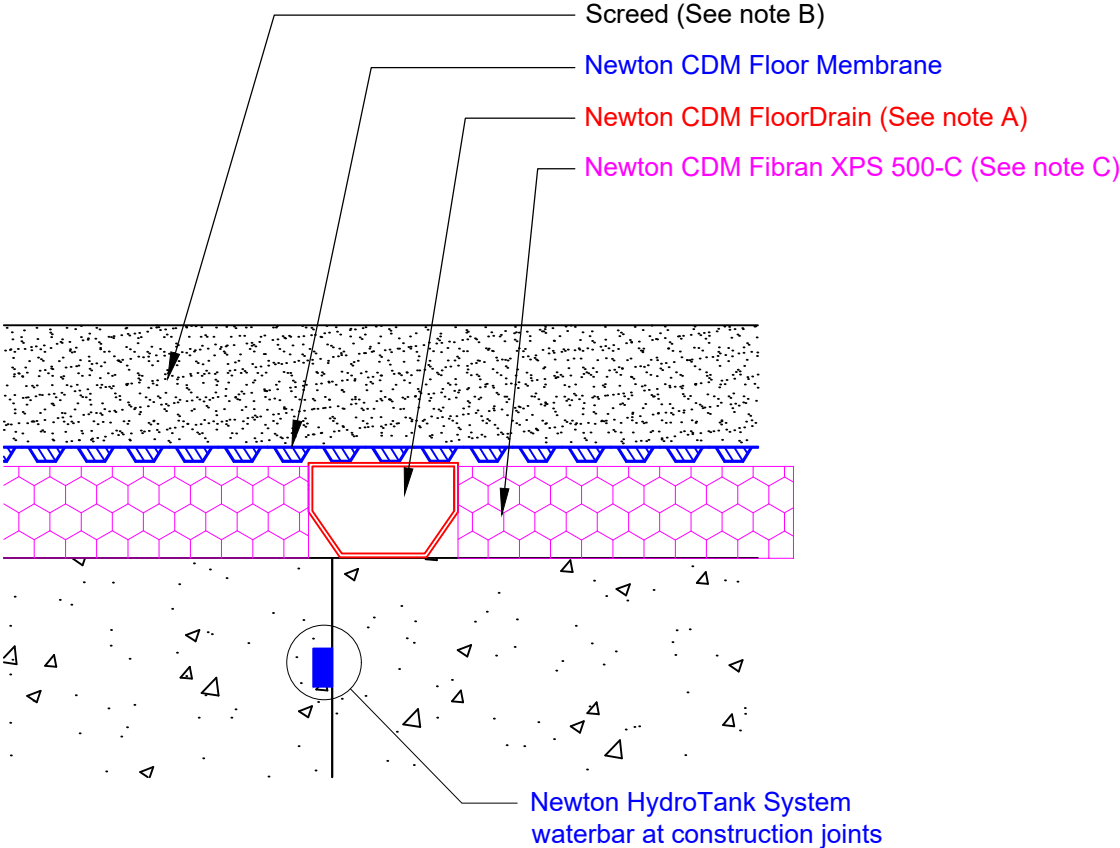


Section

DO NOT SCALE

Notes



This detail shows protection to construction joints within the slab or raft with a line of Newton CDM FloorDrain. Use in conjunction with Newton drawings starting CDM-SA or CDM-RA where Newton CDM BaseDrain is laid above the slab. If the Newton CDM BaseDrain is sat within a recess to the slab or raft as with drawings starting CDM-SW or CDM-RW, detail CDM-D02 should be used.

The Newton CDM FloorDrain connects to the perimeter Newton CDM BaseDrain ring with Newton CDM BaseDrain 'T' Pieces - see detail CDM-P03 Newton BaseDrain Layout & Parts for further details.

- A. Newton CDM FloorDrain should always be laid level and connected to the sump chamber or safe gravity drainage with at least two Drainage Connectors, see drawings CDM-P03 (BaseDrain Layout & Parts) and CDM-P09 (Titan-Pro Pump System).
- B. Screed to manufacturers recommendations or current British Standard.
- C. Newton CDM Fibran XPS 500-C is placed below the Newton flooring membrane as a fully drained supporting spacer. The maximum floor load is 16 Mpa (1.6 tonnes/m2). Newton CDM Fibran XPS 500-C has a thermal conductivity of 0.035W/mk and as such will make a significant contribution to the U-value of the floor.

To access further details and relevant technical information please call our Technical Team on 01732 360 095 or refer to our [website](#).

NOTE: This is a Newton waterproofing detail and copyright remains with John Newton & Co. Ltd. (trading as Newton Waterproofing Systems). Any specification/advice provided is only valid if used with products supplied by John Newton & Co. Ltd. For the design of the structure, please use a professional designer. We recommend that Newtons' waterproofing systems are installed by our NSBC registered contractors who can offer insurance backed guarantees and accept liability for both the design and installation of our systems. Please refer to product data sheets before installation of our products. Newton Waterproofing Systems reserve the right to update drawings and product literature at any time.

Reference	CDM-D01	Designed	DGB
Revision	D	Drawn	PJN
Date	08/07/2025	Checked	TC