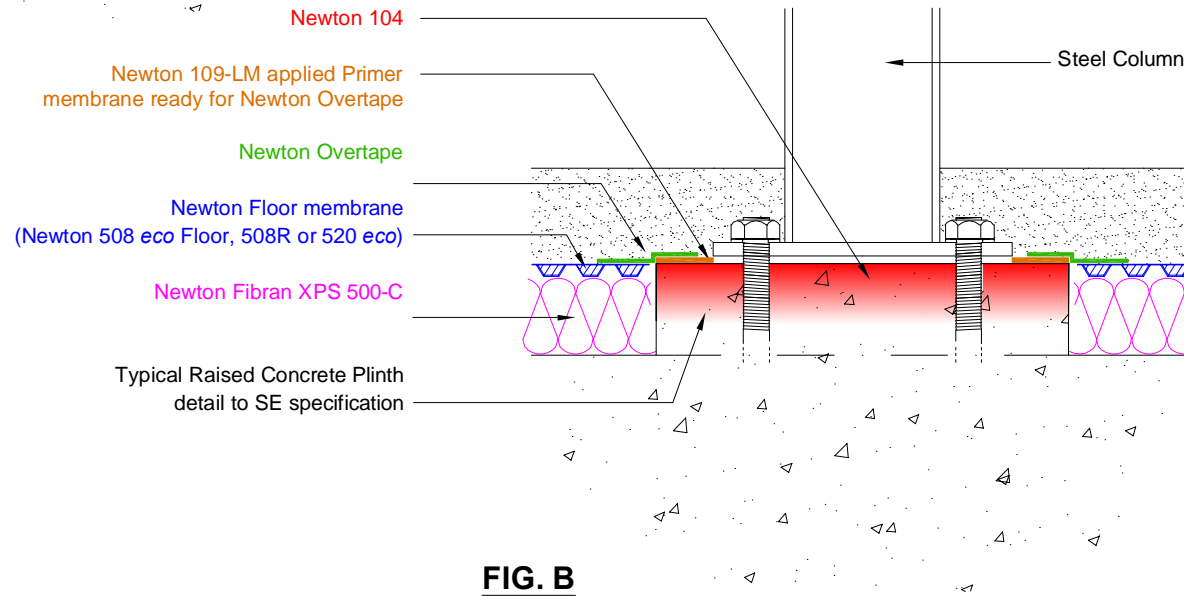
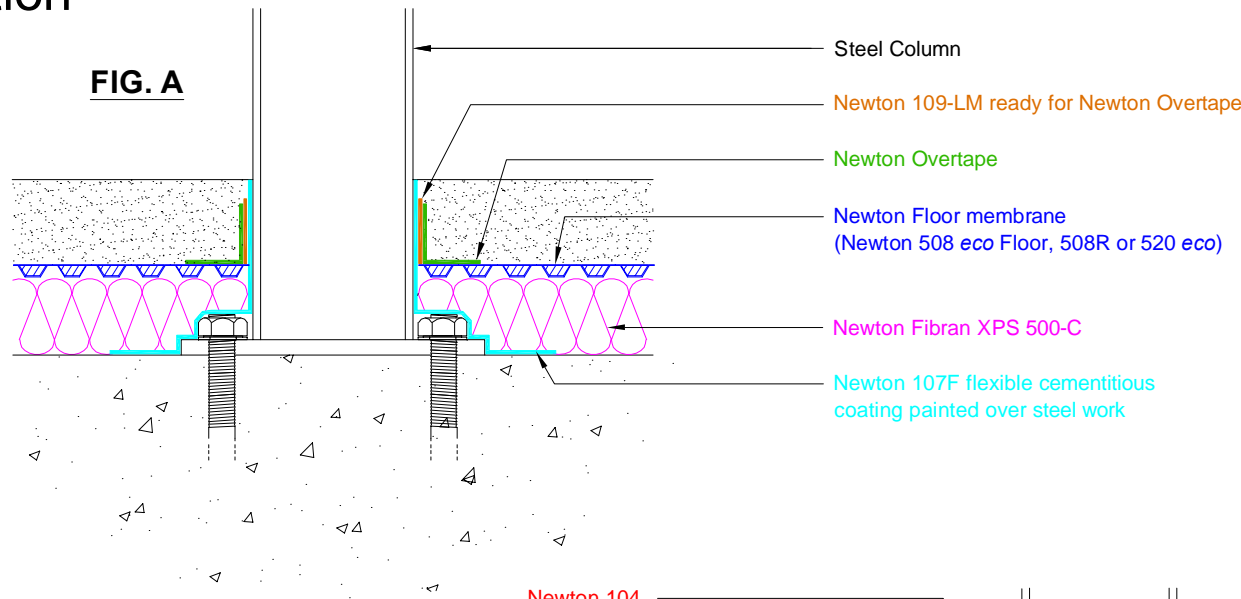


# Section

DO NOT SCALE

## Notes

**FIG. A**



This detailing should only be used in conjunction with Newton CDM drawings prefixed RA and SA where Newton Basedrain is laid above the slab/raft.

**FIG. A.**  
Shows a steel column supported off the slab/raft where the Newton Floor membrane is laid above closed cell insulation. Newton 107F is completely waterproof and provides the same anti-carbonation protection as 80mm of concrete.

**FIG. B.**  
Shows a steel column supported off a raised plinth where the Newton Floor membrane is laid above closed cell insulation.

With this detail the steel column is totally isolated from any dampness resident in the slab/raft.

**Please Note** - If alternate column detailing is required, please contact our technical team for more info

To access further details and relevant technical information please call our Technical Team on 01732 360095 or refer to our [website](#).

### Newton CDM System

Detail showing structural steel column waterproofing variations

NOTE: This is a Newton waterproofing detail and copyright remains with John Newton & Co. Ltd. (trading as Newton Waterproofing Systems). Any specification/advice provided is only valid if used with products supplied by John Newton & Co. Ltd. For the design of the structure, please use a professional designer. We recommend that Newtons' waterproofing systems are installed by our NSBC registered contractors who can offer insurance backed guarantees and accept liability for both the design and installation of our systems. Please refer to product data sheets before installation of our products. Newton Waterproofing Systems reserve the right to update drawings and product literature at any time.

Scale	Drawing Reference	Original Reference	Drawing Revision
Not to scale	CDM-D12A	D18 & D19	e
Date	Designed by	Drawn by	Checked by
20/03/2018	DGB	CER	DGB