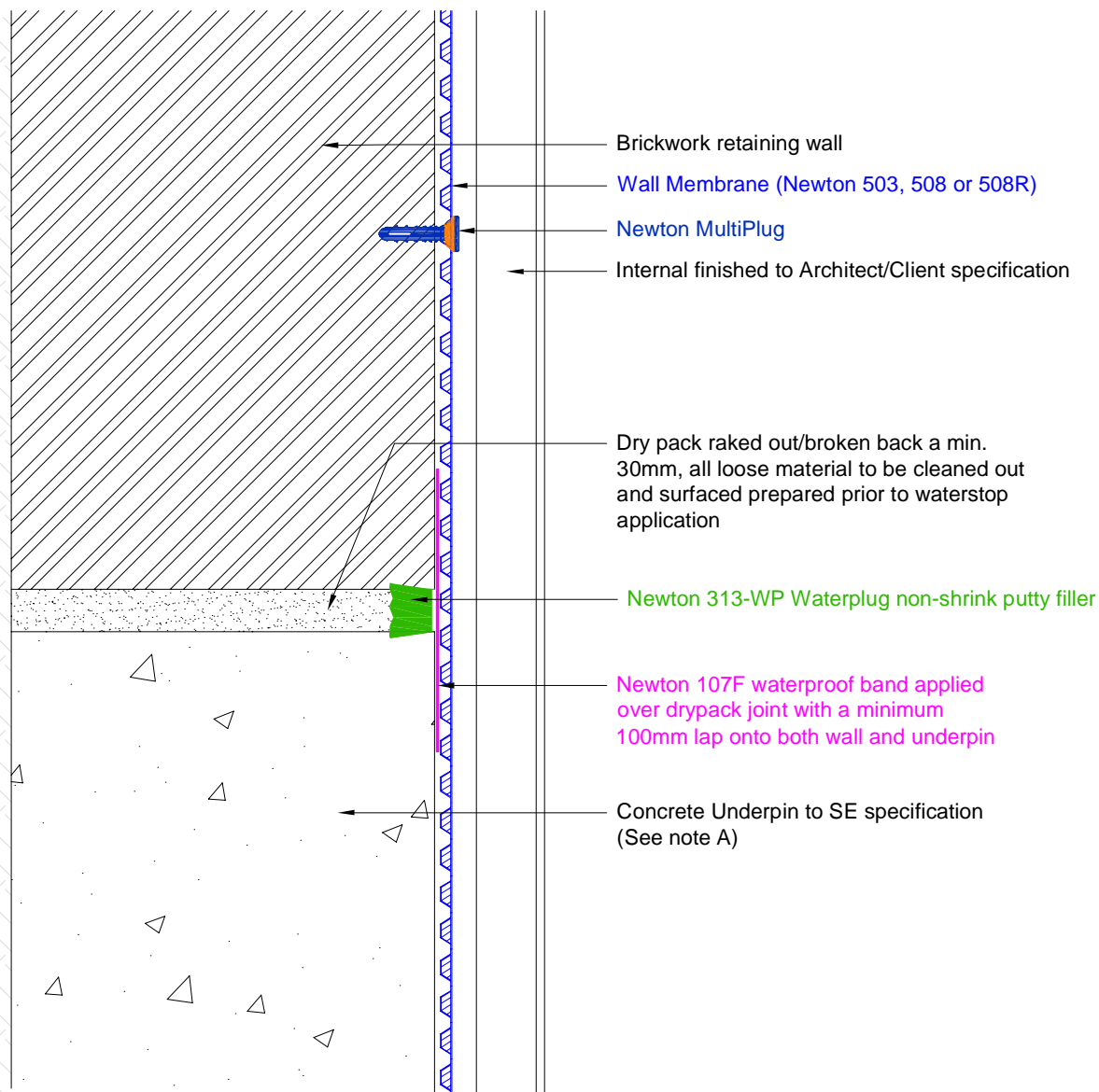


Section

DO NOT SCALE

Notes



Brickwork retaining wall

Wall Membrane (Newton 503, 508 or 508R)

Newton MultiPlug

Internal finished to Architect/Client specification

Dry pack raked out/broken back a min. 30mm, all loose material to be cleaned out and surfaced prepared prior to waterstop application

Newton 313-WP Waterplug non-shrink putty filler

Newton 107F waterproof band applied over drypack joint with a minimum 100mm lap onto both wall and underpin

Concrete Underpin to SE specification (See note A)

The dry pack used within underpinning contains a large amount of free lime which can cause limescale build up within the drainage channel of the Newton CDM System should water enter through the dry pack.

This drawing shows a method of sealing the dry pack to prevent water ingress.

A) Joints between pins should be waterproofed with Newton System 300 waterbar.

To access further details and relevant technical information please call our Technical Team on 01732 360095 or refer to our [website](#).

Newton CDM System

Concrete underpin below masonry wall, showing sealing of dry pack

NOTE: This is a Newton waterproofing detail and copyright remains with John Newton & Co. Ltd. (trading as Newton Waterproofing Systems). Any specification/advice provided is only valid if used with products supplied by John Newton & Co. Ltd. For the design of the structure, please use a professional designer. We recommend that Newtons' waterproofing systems are installed by our NSBC registered contractors who can offer insurance backed guarantees and accept liability for both the design and installation of our systems. Please refer to product data sheets before installation of our products. Newton Waterproofing Systems reserve the right to update drawings and product literature at any time.

Scale Not to scale	Drawing Reference CDM-D15	Original Reference	Drawing Revision f
Date 20/03/2018	Designed by DGB	Drawn by CER	Checked by DGB