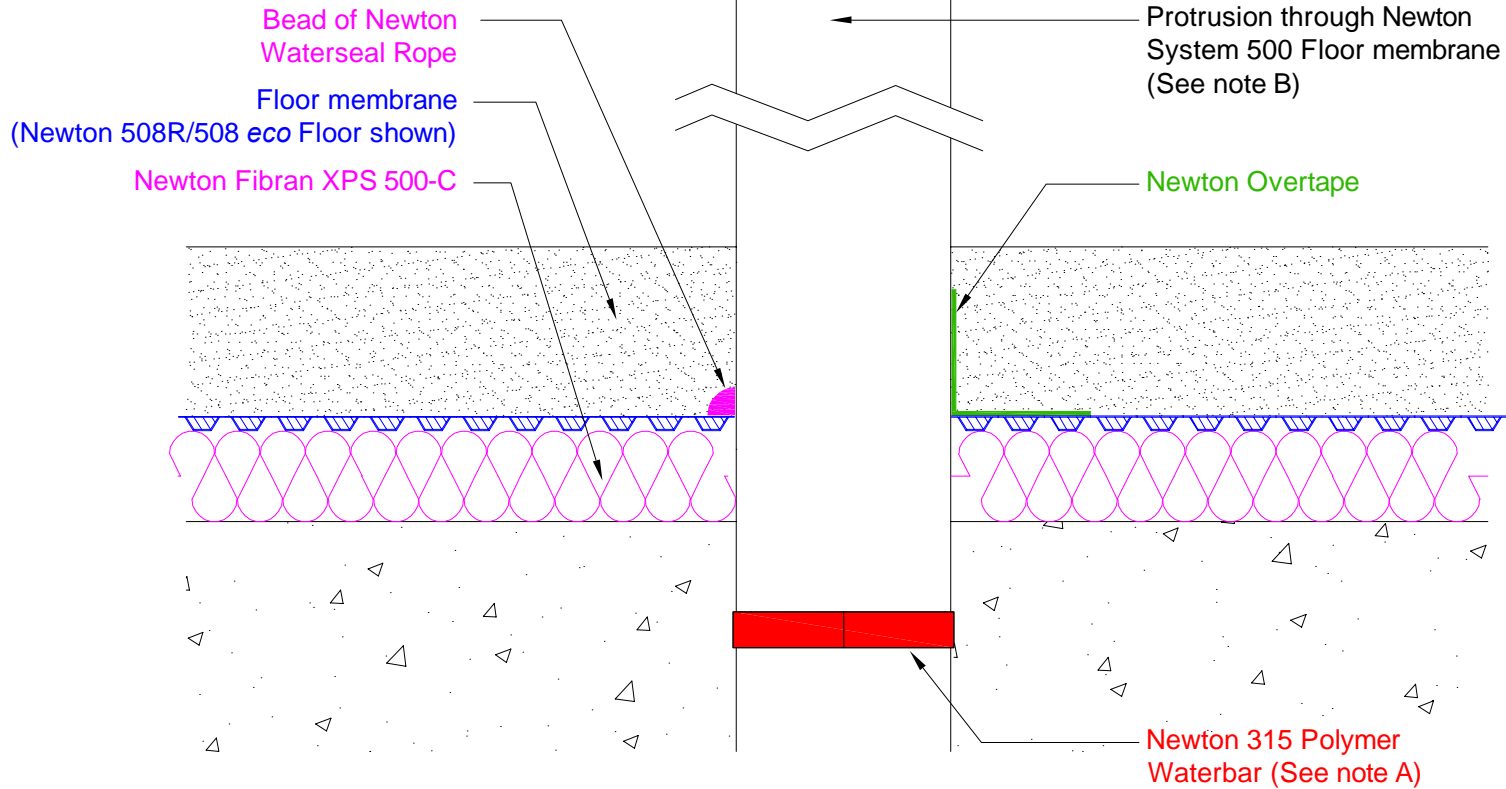


# Section

DO NOT SCALE

## Notes



This detail shows a protrusion, such as a pipe or steel, through the Newton System 500 Floor membrane, showing sealing with Newton Waterseal Rope or Newton Overtape as options. This detail should be used in conjunction with Newton CDM System drawings prefixed RA or SA where the Newton Basedrain drainage channel sits directly above the slab or raft, with the floor membrane above a spacer of 50mm Newton Fibran XPS 500-C.

A) The detail is further reinforced with Newton 315 Polymer Waterbar providing a swelling waterbar to prevent movement of water under pressure leaking through the raft/slab. Adhere abutted waterbar with Newton 306 SwellMastic or Newton 309-M Mastic, secure with steel wire tie.

B) The protrusion may need priming with a primer such as Newton 109-LM to ensure adhesion of the sealing product to the protrusion.

To access further details and relevant technical information please call our Technical Team on 01732 360095 or refer to our [website](#).

### Newton CDM System

Detail showing protrusion through Newton System 500 Floor membrane

NOTE: This is a Newton waterproofing detail and copyright remains with John Newton & Co. Ltd. (trading as Newton Waterproofing Systems). Any specification/advice provided is only valid if used with products supplied by John Newton & Co. Ltd. For the design of the structure, please use a professional designer. We recommend that Newtons' waterproofing systems are installed by our NSBC registered contractors who can offer insurance backed guarantees and accept liability for both the design and installation of our systems. Please refer to product data sheets before installation of our products. Newton Waterproofing Systems reserve the right to update drawings and product literature at any time.

Scale	Drawing Reference	Original Reference	Drawing Revision
Not to scale	CDM-D16A	D20	9
Date	Designed by	Drawn by	Checked by
20/03/2018	DGB	CER	RC