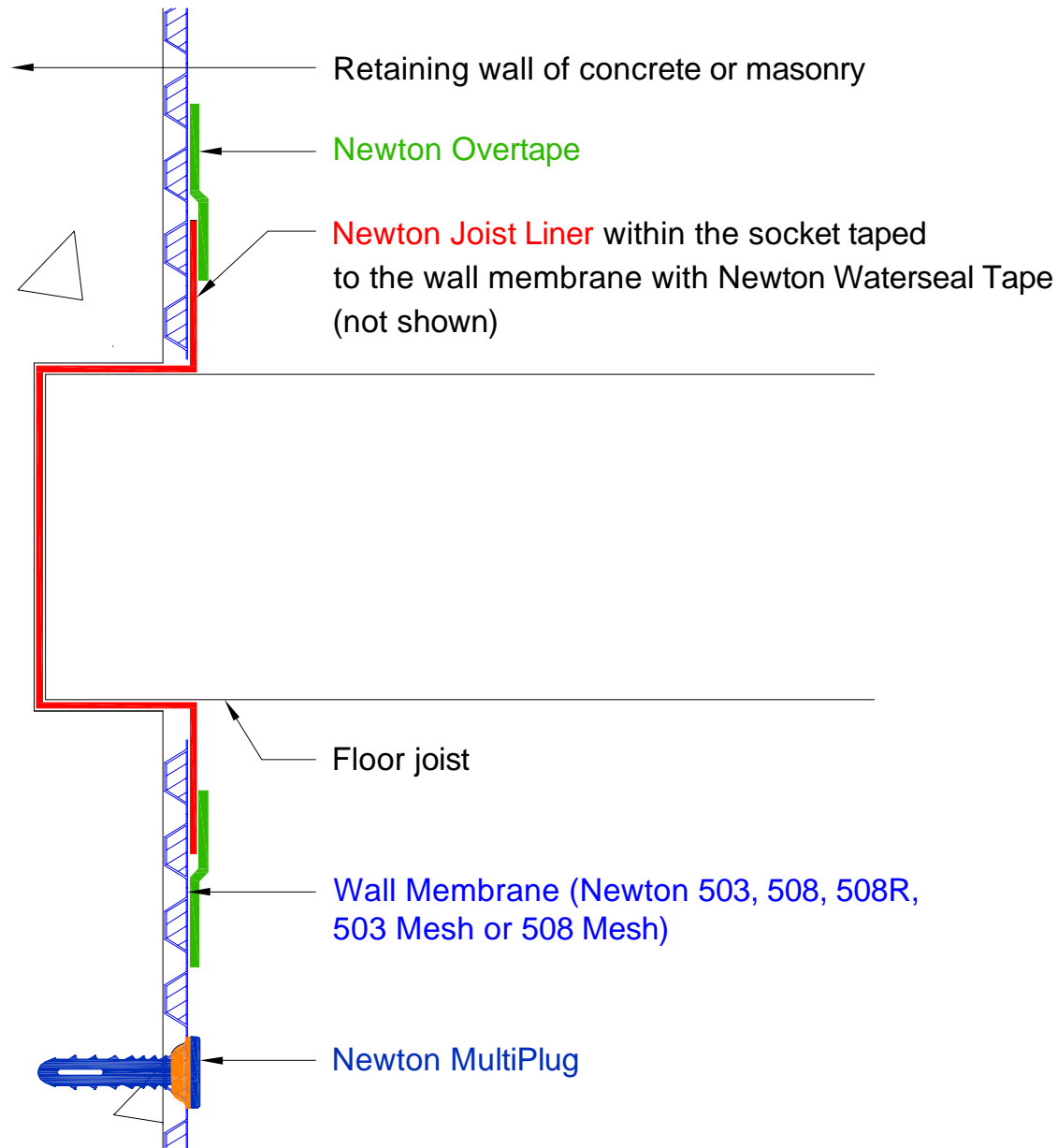


# Section

DO NOT SCALE

## Notes



This detail should be used in conjunction with a Newton CDM System waterproofing drawing.

Joists that are supported within pockets with damp or wet walls should have the pocket lined with a DPM or proprietary pocket sock as shown in the drawing.

Newton Waterproofing Systems supply bespoke moulded Newton Joist Liners to suit individual joist requirements. Please refer to CDM-P20 for the information required for ordering.

Where the joist cannot be removed so as to install the Newton Joist Liner the joist end should be treated so as to prevent dampness rotting the timber as shown in drawing CDM-D08.

The Newton System 500 Wall membrane should extend as high as possible and can be cut around the joist if required.

To access further details and relevant technical information please call our Technical Team on 01732 360095 or refer to our [website](#).

Newton CDM System

Floor joist protected by Newton Joist Liner

NOTE: This is a Newton waterproofing detail and copyright remains with John Newton & Co. Ltd. (trading as Newton Waterproofing Systems). Any specification/advice provided is only valid if used with products supplied by John Newton & Co. Ltd. For the design of the structure, please use a professional designer. We recommend that Newtons' waterproofing systems are installed by our NSBC registered contractors who can offer insurance backed guarantees and accept liability for both the design and installation of our systems. Please refer to product data sheets before installation of our products. Newton Waterproofing Systems reserve the right to update drawings and product literature at any time.

Scale Not to scale	Drawing Reference CDM-D17A	Original Reference	Drawing Revision d
Date 20/03/2018	Designed by	Drawn by CER	Checked by DGB