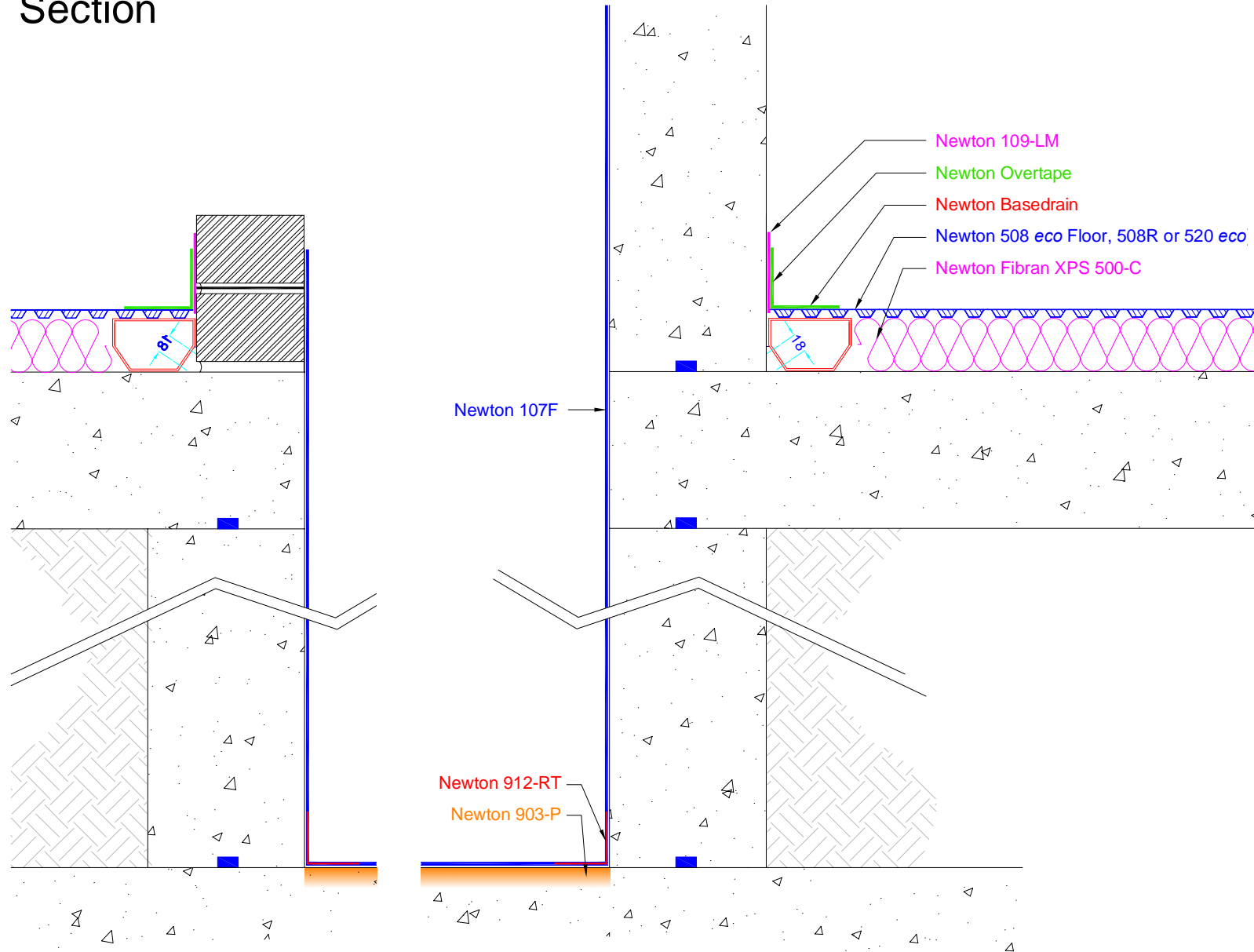


Section

DO NOT SCALE



Notes

This detail should be used where the requirement is to waterproof a lift pit and prevent water from below the Newton System 500 Floor membrane from entering the pit from above and is to be used with Newton CDM System drawings prefixed CDM-SA or CDM-RA where the drainage channel is sat above the slab or raft.

Newton 107F is a highly flexible cement based waterproofing slurry. Apply to all surfaces of the lift pit and to brick bund as shown.

The membrane should be reinforced at the change in direction from horizontal to vertical with Newton 912-RT as recommended within the product datasheet.

To access further details and relevant technical information please call our Technical Team on 01732 360095 or refer to our [website](#).

Newton CDM System

Lift Pit waterproofing, showing bund as barrier to water below the Newton System 500 Floor membrane

NOTE: This is a Newton waterproofing detail and copyright remains with John Newton & Co. Ltd. (trading as Newton Waterproofing Systems). Any specification/advice provided is only valid if used with products supplied by John Newton & Co. Ltd. For the design of the structure, please use a professional designer. We recommend that Newtons' waterproofing systems are installed by our NSBC registered contractors who can offer insurance backed guarantees and accept liability for both the design and installation of our systems. Please refer to product data sheets before installation of our products. Newton Waterproofing Systems reserve the right to update drawings and product literature at any time.

Scale Not to scale	Drawing Reference CDM-D41	Original Reference	Drawing Revision e
Date 20/03/2018	Designed by DGB	Drawn by CER	Checked by DGB