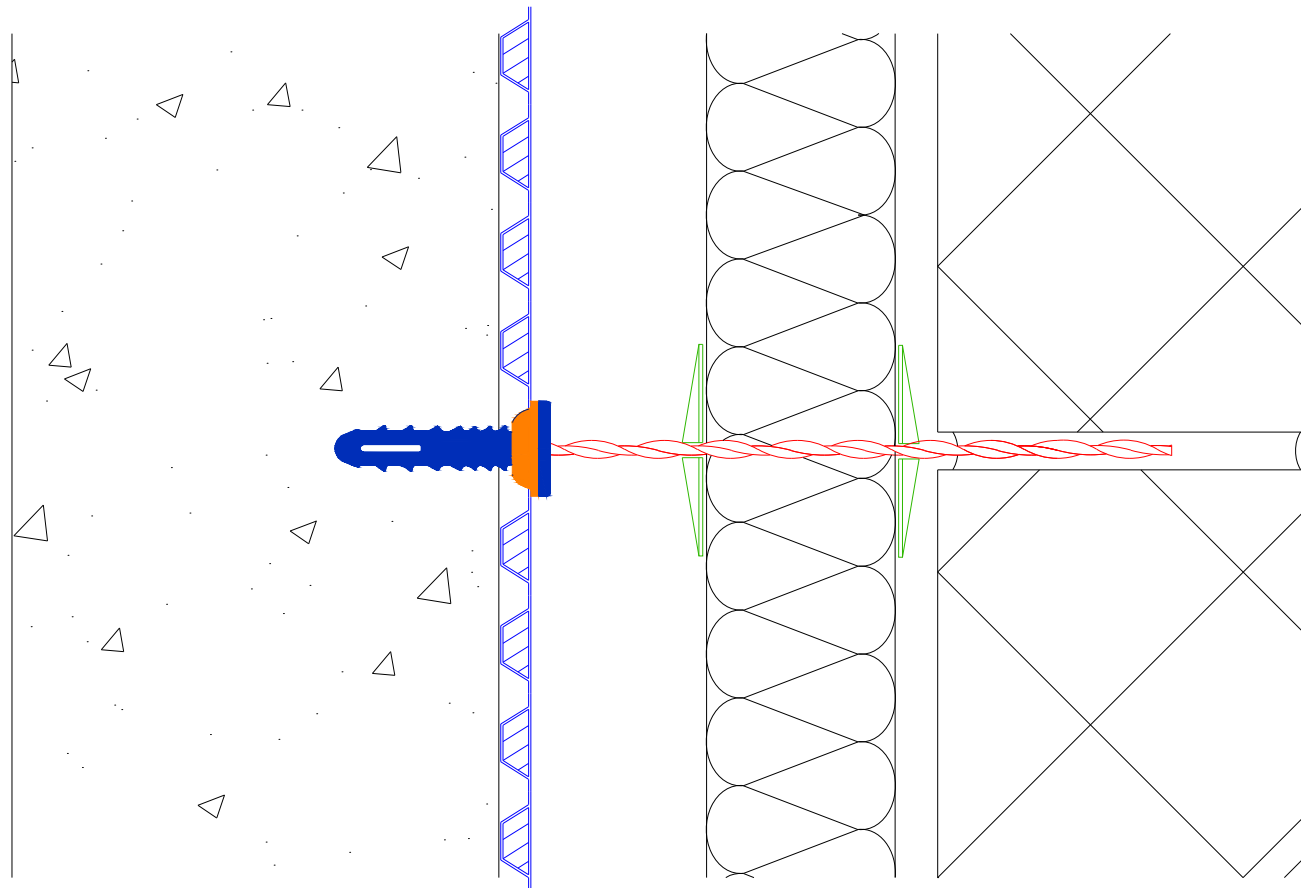


Notes

Least Leaf Thickness	Nominal Cavity Width	Spacing of ties		Ties per square metre
		Horizontal	Vertical	
65-90mm	50-70mm	900mm	450mm	2.5
Above 90mm	50-150mm	450mm	450mm	4.9



NOTE: This is a Newton waterproofing detail and copyright remains with John Newton & Co. Ltd. (trading as Newton Waterproofing Systems). Any specification/advice provided is only valid if used with products supplied by John Newton & Co. Ltd. For the design of the structure, please use a professional designer. We recommend that Newtons' waterproofing systems are installed by our NSBC registered contractors who can offer insurance backed guarantees and accept liability for both the design and installation of our systems. Please refer to product data sheets before installation of our products. Newton Waterproofing Systems reserve the right to update drawings and product literature at any time.

Where a cavity is formed and Cavity Wall Ties are required, Newton Helifix ties should be driven into the Newton MultiPlug, using the appropriate Newton helifix Application tool, ready for insertion into the mortar joint of the block or brick wall.

BS 5628 states that the depth of embedment into the near leaf mortar joint should be a minimum of 50mm. However for additional security in order to mitigate any installation inaccuracies Helifix advise $\frac{3}{4}$ of the near leaf thickness (minimum of 70mm) 28mm of the tie is inserted into the Newton MultiPlug.

The spacing of the ties is dependent on the wall thickness and the width of the cavity - see table above the drawing. Ties at vertical edges of openings or unbonded edges, ie: movement joints, should be placed at 300mm centres vertically at a maximum 225mm from the open edge.

Newton Insulation Clips should be used to hold the insulation in place. Depending on the position of the insulation one or two clips will be required per tie.

Newton MultiPlug Helifix Ties are 6mm in diameter and are available in lengths of 155, 170, 195, 220, 245, 270, 295 and 325mm.

To access further details and relevant technical information please call our Technical Team on 01732 360095 or refer to our [website](https://www.newtonwaterproofing.co.uk).

Newton CDM System

Newton MultiPlug Helifix Wall Tie