

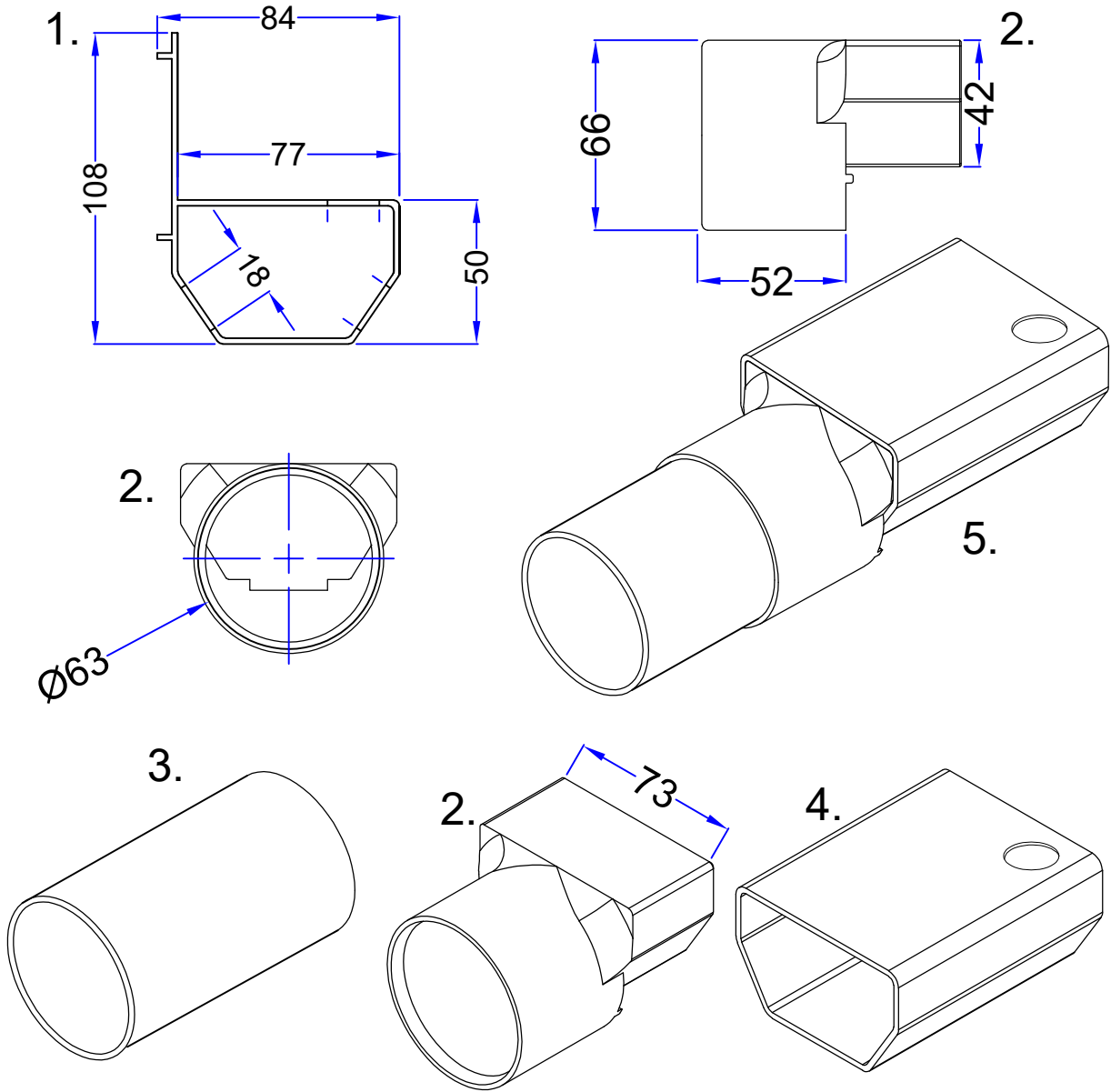
DO NOT SCALE

Notes

- 1. Newton CDM BaseDrain - 2m lengths
- 2. Newton Drainage Adaptor
- 3. 63mm O/D pipe to Newton Titan-Pro sump, Titan 2 sump or safe drainage.
- 4. Newton CDM FloorDrain - 2m lengths
- 5. FloorDrain to Connector to 63mm Pipe

Newton CDM BaseDrain is normally installed on the slab/raft adjacent to the 50mm Newton CDM Fibran XPS 500-C which acts as a spacer to ensure the floor membrane is above the drainage channel.

Where a recess is formed in a new slab/raft a recess of 50mm deep x 120mm wide is required. See Newton CDM section drawings for installation methods.



To access further details and relevant technical information please call our Technical Team on 01732 360 095 or refer to our [website](#).

NOTE: This is a Newton waterproofing detail and copyright remains with John Newton & Co. Ltd. (trading as Newton Waterproofing Systems). Any specification/advice provided is only valid if used with products supplied by John Newton & Co. Ltd. For the design of the structure, please use a professional designer. We recommend that Newtons' waterproofing systems are installed by our NSBC registered contractors who can offer insurance backed guarantees and accept liability for both the design and installation of our systems. Please refer to product data sheets before installation of our products. Newton Waterproofing Systems reserve the right to update drawings and product literature at any time.

Reference	CDM-P05	Designed	DGB
Revision	F	Drawn	PJN
Date	16/07/2025	Checked	DGB