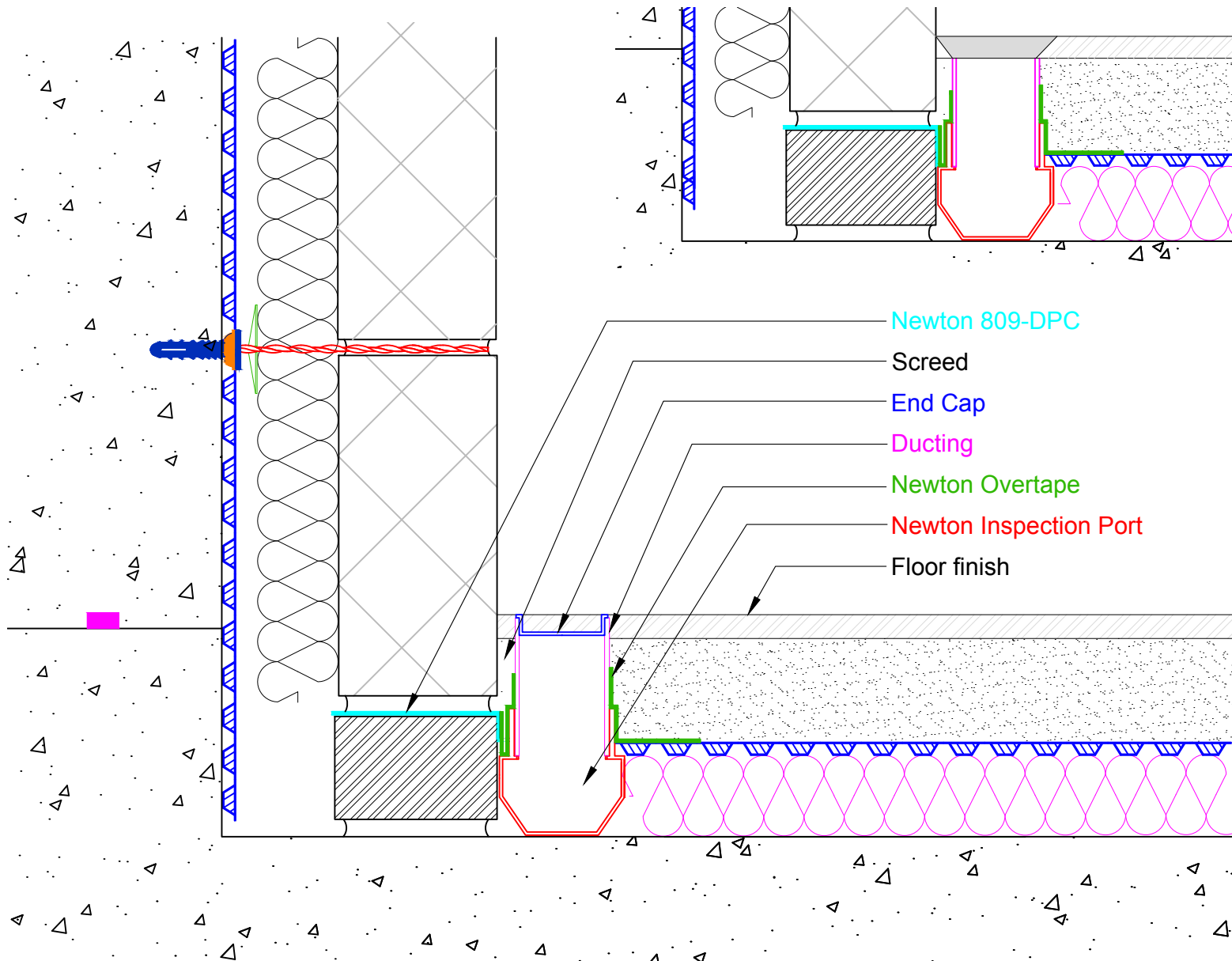


DO NOT SCALE



NOTE: This is a Newton waterproofing detail and copyright remains with John Newton & Co. Ltd. (trading as Newton Waterproofing Systems). Any specification/advice provided is only valid if used with products supplied by John Newton & Co. Ltd. For the design of the structure, please use a professional designer. We recommend that Newtons' waterproofing systems are installed by our NSBC registered contractors who can offer insurance backed guarantees and accept liability for both the design and installation of our systems. Please refer to product data sheets before installation of our products. Newton Waterproofing Systems reserve the right to update drawings and product literature at any time.

Notes

This drawing shows the Newton Inspection Port through the floor finish leaving just a white border in the finish.

For a 3D view please see drawing CDM-P18-3D.

The Newton Basedrain Inspection port, allows access to the drainage channel and so makes the Newton CDM System maintainable and so meets the requirements within 4.3.2 of BS8102:2009 that the issue of reparability should be taken into account and feasibility of remedial measure assessed.

Product codes:

D26 - Basedrain Inspection Port pack of 4.

Please ensure that the depth of the wall finishes do not cover the port.

To access further details and relevant technical information please call our Technical Team on 01732 360095 or refer to our [website](http://www.newtonwaterproofing.co.uk).

Newton CDM System

Newton Inspection Port through floor finish