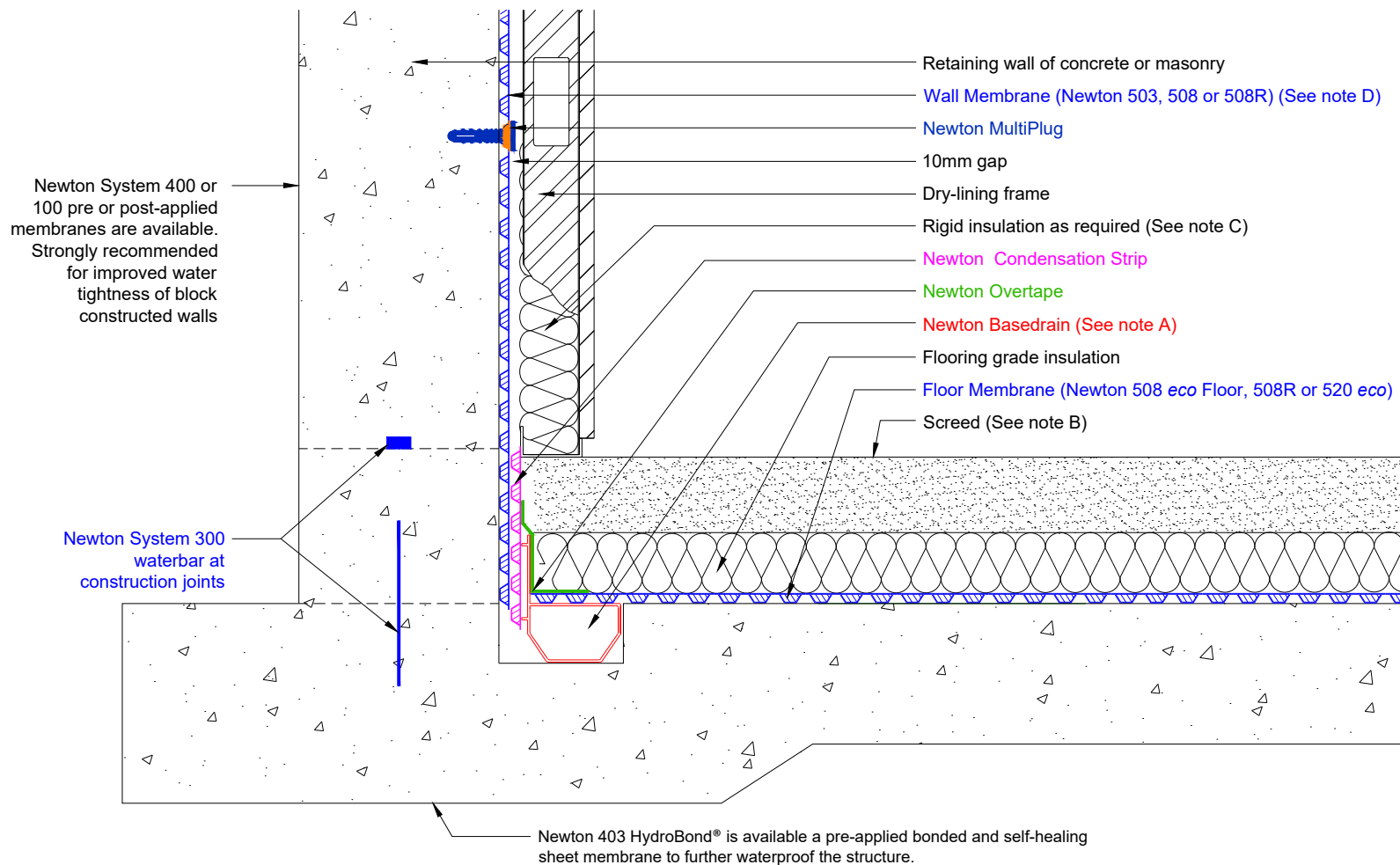


Section

DO NOT SCALE



Notes

This detail assumes that the raft is in good condition - constructed to BS EN 1992 (Eurocode 2), and that the structure as a whole is of sufficient mass and quality to resist heads of water pressure as required by BS8102.

The raft reinforcing steel will need to be designed to accommodate the recess for the Newton Basedrain drainage channel to ensure correct coverage of concrete above the steel.

It is recommended that the concrete be treated with Newton 906 Lime Inhibitor to limit the leaching of free lime from the concrete.

All construction joints (day joints, shrinkage joints, movement joints etc) should be waterproofed with Newton System 300 waterbars to limit water ingress thorough joints in the structure.

A) Newton Basedrain should always be laid level and connected to the sump chamber or safe gravity drainage with at least two Drainage Connectors, see drawings CDM-P03 (Basedrain Layout & Parts) and CDM-P09 (Titan-Pro Pump System). Construction joints to the floor should be protected by Newton Floordrain, see drawing CDM-D02 (Construction joints protected by Newton Floordrain). For supporting walls detailing please see drawing CDM-D04.

B) Screed to manufacturers recommendations or current British Standard.

C) If insulating in front of the wall membrane a vapour control layer may be required to prevent interstitial condensation, see Guidance Note GD-01.

D) Wall membrane and Condensation Strip should be trimmed to 40mm from slab to keep clear of the Basedrain holes.

To access further details and relevant technical information please call our Technical Team on 01732 360095 or refer to our [website](#).

Newton CDM System

Internal cavity drain membrane system

Typical installation to structure with raft foundation

NOTE: This is a Newton waterproofing detail and copyright remains with John Newton & Co. Ltd. (trading as Newton Waterproofing Systems). Any specification/advice provided is only valid if used with products supplied by John Newton & Co. Ltd. For the design of the structure, please use a professional designer. We recommend that Newtons' waterproofing systems are installed by our NSBC registered contractors who can offer insurance backed guarantees and accept liability for both the design and installation of our systems. Please refer to product data sheets before installation of our products. Newton Waterproofing Systems reserve the right to update drawings and product literature at any time.