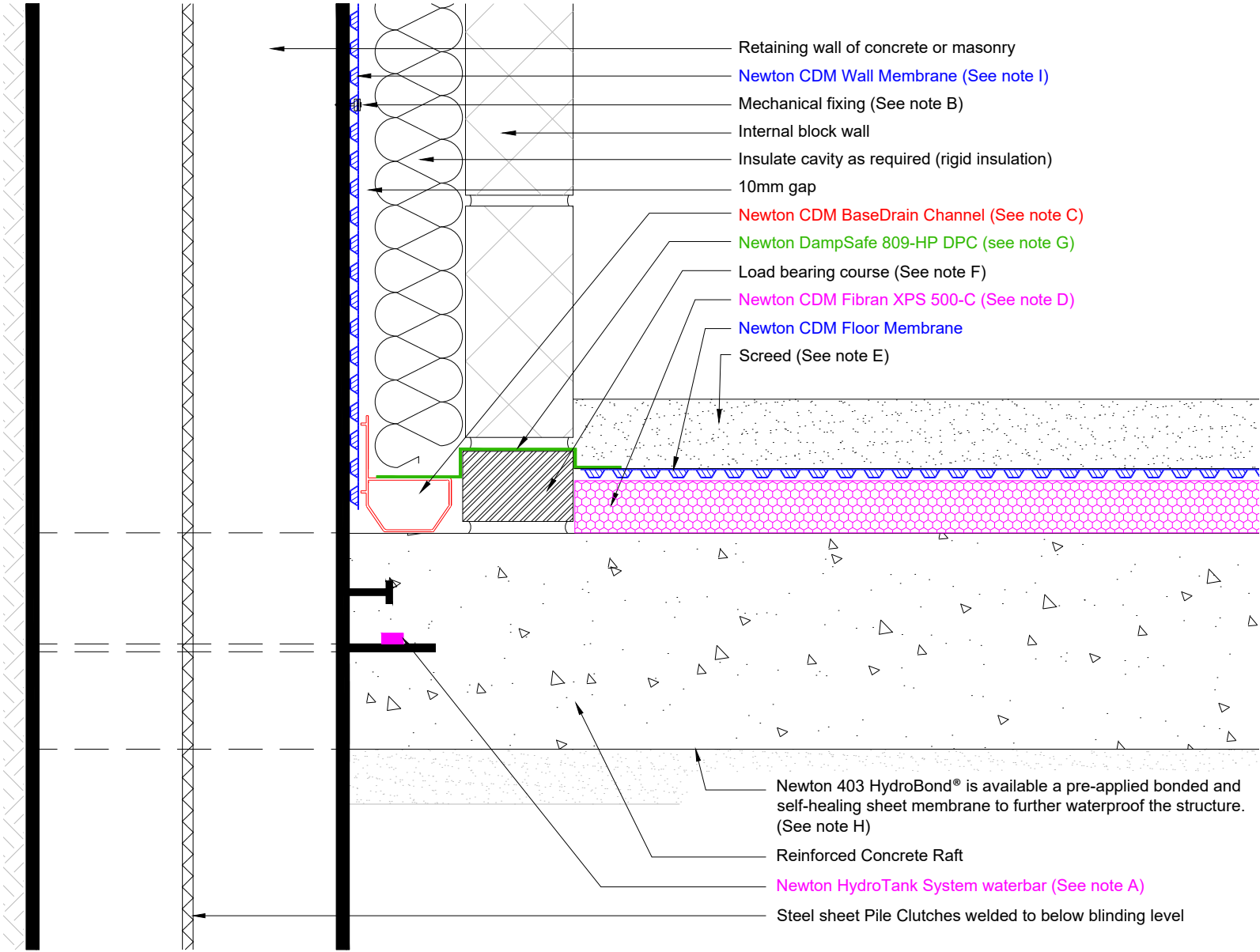


Section

DO NOT SCALE

Notes



This detail assumes that the slab is in good condition - constructed to BS EN 1992 (Eurocode 2), and that the structure as a whole is of sufficient mass and quality to resist heads of water pressure as required by BS8102.

It is recommended that the concrete be treated with Newton 906 Lime Inhibitor to limit the leaching of free lime from the concrete.

A. The top of the flange should be lightly abraded prior to securing the Newton HydroTank System Waterbar with Newton 309 Contact Adhesive and a nail gun.

B. When fixing directly to steel sheet piles we recommend using a gas powered pulsar gun with Newton foam backed washers, please speak with the Newton technical department.

C. Newton CDM BaseDrain should always be laid level and connected to the sump chamber or safe gravity drainage with at least two Drainage Connectors, see drawings CDM-P03 (BaseDrain Layout & Parts) and CDM-P09 (Titan-Pro Pump System). Construction joints to the floor should be protected by Newton CDM FloorDrain, see drawing CDM-D01 (Construction joints protected by Newton CDM FloorDrain). For supporting walls detailing please see drawing CDM-D03.

D. Newton CDM Fibran XPS 500-C is placed below the Newton flooring membrane as a fully drained supporting spacer. The maximum floor load is 16 Mpa (1.6 tonnes/m2). Newton CDM Fibran XPS 500-C has a thermal conductivity of 0.035W/mk and as such will make a significant contribution to the U-value of the floor.

E. Screed to manufacturers recommendations or current British Standard.

F. The load bearing course will be either engineering brick or a load bearing insulation if a cold bridge is to be avoided. Newton CDM BaseDrain 'T'-Pieces should be placed through the load bearing course at 2m centres to allow water to pass to the FloorDrain.

G. i) Newton DampSafe 809-HP DPC is taped to the Newton CDM Floor membrane with Newton CDM WaterSeal Tape - not shown.  
ii) Take the Newton DampSafe 809-HP DPC across onto the top of the Newton CDM BaseDrain within the cavity as shown, tape to the Newton CDM BaseDrain with Newton CDM WaterSeal Tape - not shown (option).

H. Refer to H-SIB for application of Newton 403 HydroBond.

I. Wall membrane should be trimmed to 40mm from slab to keep clear of the BaseDrain holes.

This detail is intended as guidance only and provides an understanding of how the products and systems can be configured as part of a waterproofing strategy. It should be understood that the detail is not the project waterproofing design and that by providing the detail, Newton are not fulfilling the role as appointed waterproofing designer as recommended by BS 8102:2022.

Newton or our delivery partners can fulfil the appointed role of waterproofing designer. Please speak to our Technical Team for further information.

To access further details and relevant technical information please call our Technical Team on 01732 360 095 or refer to our [website](#).

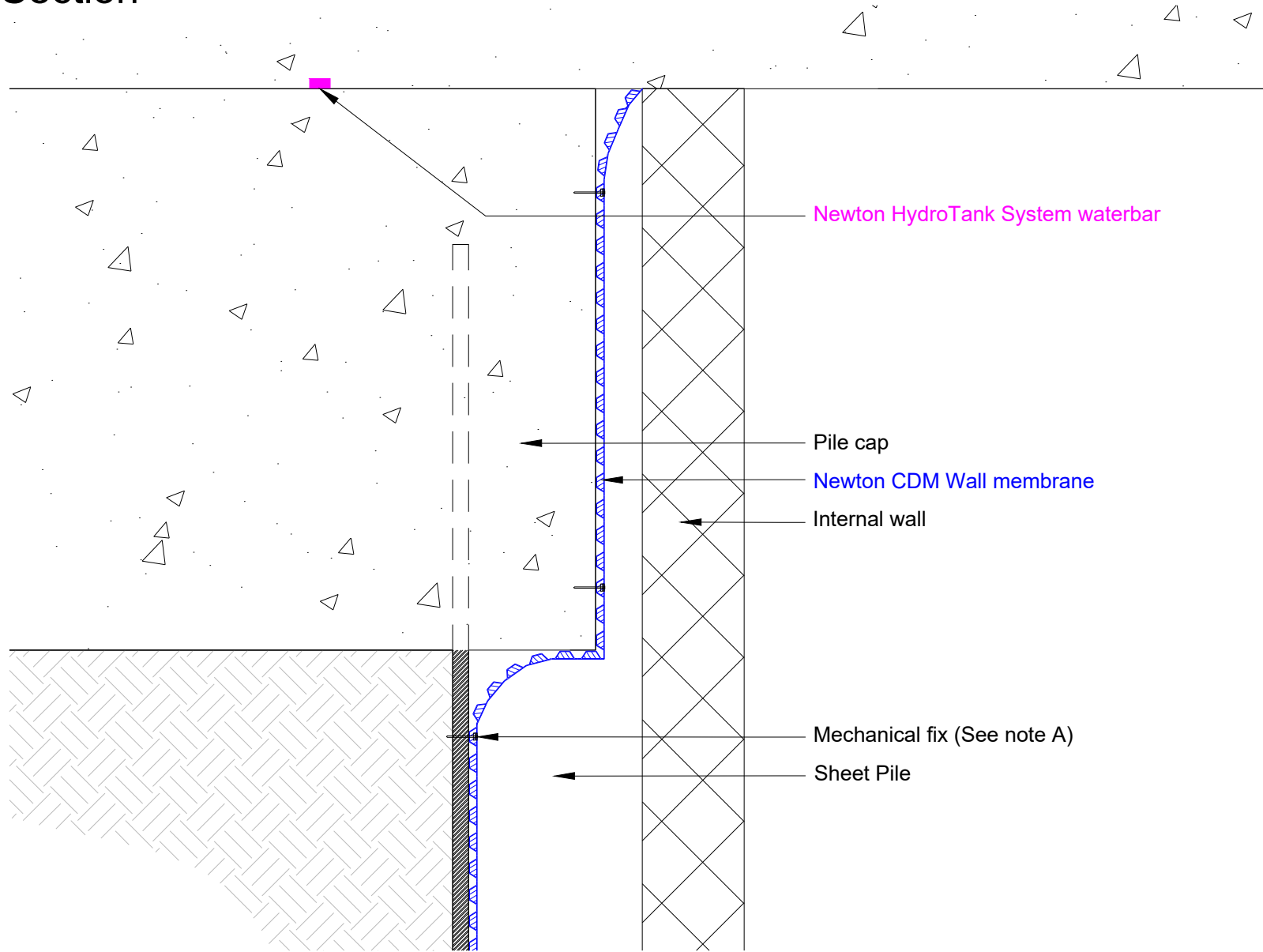
NOTE: This is a Newton waterproofing detail and copyright remains with John Newton & Co. Ltd. (trading as Newton Waterproofing Systems). Any specification/advice provided is only valid if used with products supplied by John Newton & Co. Ltd. For the design of the structure, please use a professional designer. We recommend that Newtons' waterproofing systems are installed by our NSBC registered contractors who can offer insurance backed guarantees and accept liability for both the design and installation of our systems. Please refer to product data sheets before installation of our products. Newton Waterproofing Systems reserve the right to update drawings and product literature at any time.

Reference	CDM-SIBA-01	Designed	DGB
Revision	D	Drawn	PJN
Date	07/07/2025	Checked	TC

Section

DO NOT SCALE

Notes



This detail shows the termination of Newton CDM System in front of Steel Intensive sheet piles.

- A. When fixing directly to steel sheet piles we recommend using a gas powered pulsar gun with Newton foam backed washers, please speak with the Newton technical department.

This system is suitable for habitable Grade 3 of the environmental table within BS8102:2009 where no dampness is tolerable.

This detail is intended as guidance only and provides an understanding of how the products and systems can be configured as part of a waterproofing strategy. It should be understood that the detail is not the project waterproofing design and that by providing the detail, Newton are not fulfilling the role as appointed waterproofing designer as recommended by BS 8102:2022.

Newton or our delivery partners can fulfil the appointed role of waterproofing designer. Please speak to our Technical Team for further information.

To access further details and relevant technical information please call our Technical Team on 01732 360 095 or refer to our [website](#).

NOTE: This is a Newton waterproofing detail and copyright remains with John Newton & Co. Ltd. (trading as Newton Waterproofing Systems). Any specification/advice provided is only valid if used with products supplied by John Newton & Co. Ltd. For the design of the structure, please use a professional designer. We recommend that Newtons' waterproofing systems are installed by our NSBC registered contractors who can offer insurance backed guarantees and accept liability for both the design and installation of our systems. Please refer to product data sheets before installation of our products. Newton Waterproofing Systems reserve the right to update drawings and product literature at any time.



© Newton Waterproofing Systems  
(a trading name of John Newton & Co. Ltd.)  
Newton House, 17 - 20 Sovereign Way, Tonbridge, Kent, TN9 1RH, T: 01732 360 095  
Unit 6b, Gibraltar Island Road, Old mill Business Park, Leeds, LS10 1RJ, T: 0113 521 6777  
W: [www.newtonwaterproofing.co.uk](http://www.newtonwaterproofing.co.uk) E: [tech@newtonwaterproofing.co.uk](mailto:tech@newtonwaterproofing.co.uk)

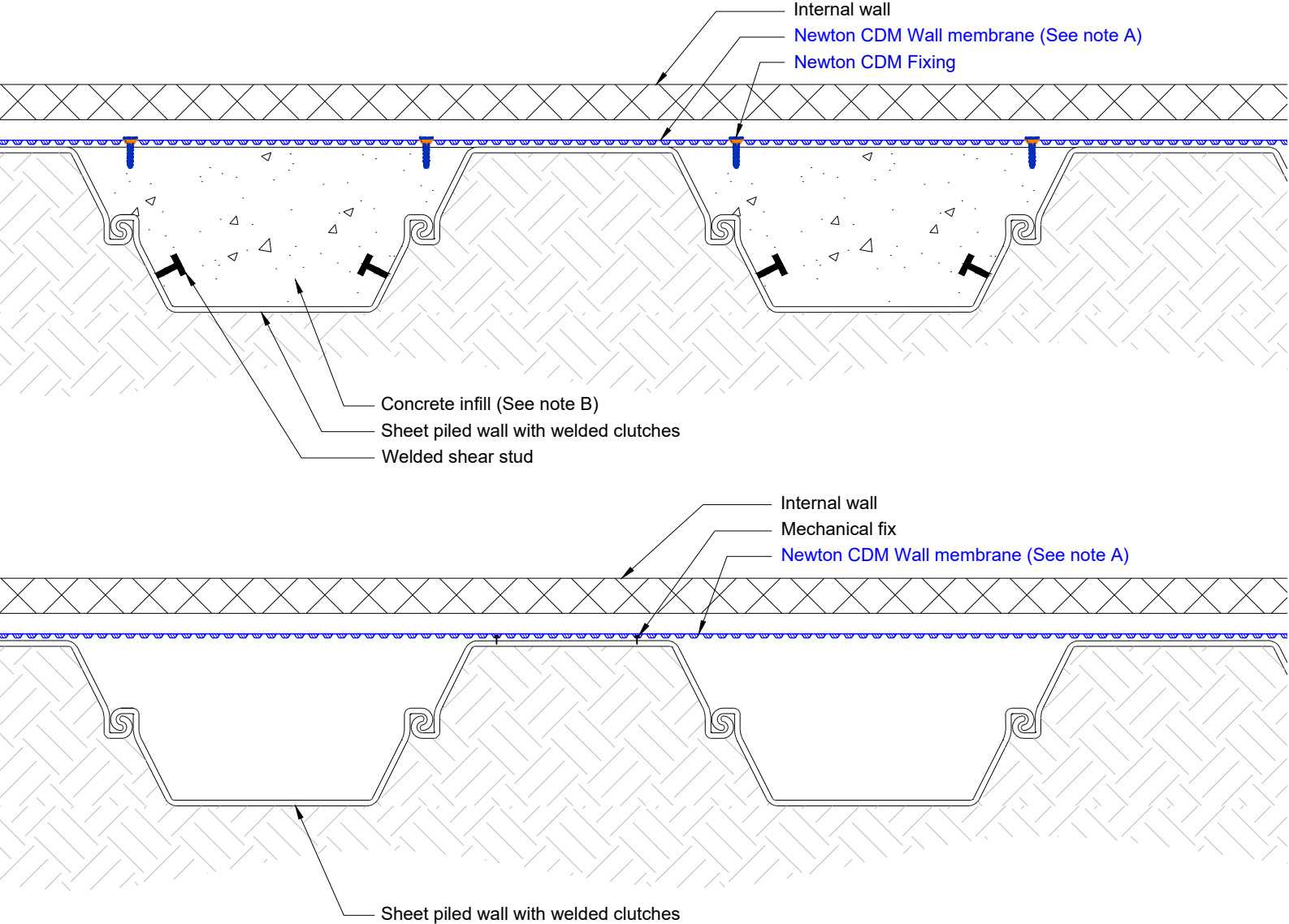
Newton CDM System  
Steel Intensive sheet piling  
Drawing 2 of 3 Detailing to capping beam

Reference	CDM-SIBA-02	Designed	DGB
Revision	D	Drawn	PJN
Date	07/07/2025	Checked	TC

Plan

DO NOT SCALE

Notes



This detail show the methods for fixing the Newton CDM System Wall membrane to Steel Intensive Sheet piling.

When fixing the Newton CDM System Wall membrane directly to Steel Intensive sheet piles we recommend using a gas powered pulsar gun with Newton foam backed washers, please speak with the Newton technical department.

- A. Ensure all lap joints for the Newton CDM System Wall membrane and but joints for the Newton CDM BaseDrain occur at the inner most face of the piles.
- B. Concrete infill to be designed by structural engineer.

This detail is intended as guidance only and provides an understanding of how the products and systems can be configured as part of a waterproofing strategy. It should be understood that the detail is not the project waterproofing design and that by providing the detail, Newton are not fulfilling the role as appointed waterproofing designer as recommended by BS 8102:2022.

Newton or our delivery partners can fulfil the appointed role of waterproofing designer. Please speak to our Technical Team for further information.

To access further details and relevant technical information please call our Technical Team on 01732 360 095 or refer to our [website](#).

NOTE: This is a Newton waterproofing detail and copyright remains with John Newton & Co. Ltd. (trading as Newton Waterproofing Systems). Any specification/advice provided is only valid if used with products supplied by John Newton & Co. Ltd. For the design of the structure, please use a professional designer. We recommend that Newtons' waterproofing systems are installed by our NSBC registered contractors who can offer insurance backed guarantees and accept liability for both the design and installation of our systems. Please refer to product data sheets before installation of our products. Newton Waterproofing Systems reserve the right to update drawings and product literature at any time.



© Newton Waterproofing Systems  
(a trading name of John Newton & Co. Ltd.)  
Newton House, 17 - 20 Sovereign Way, Tonbridge, Kent, TN9 1RH, T: 01732 360 095  
Unit 6b, Gibraltar Island Road, Old mill Business Park, Leeds, LS10 1RJ, T: 0113 521 6777  
W: [www.newtonwaterproofing.co.uk](http://www.newtonwaterproofing.co.uk) E: [tech@newtonwaterproofing.co.uk](mailto:tech@newtonwaterproofing.co.uk)

Newton CDM System  
Steel Intensive sheet piling  
Drawing 3 of 3 Plan showing typical fixing of Wall membrane

Reference	CDM-SIBA-03	Designed	DGB
Revision	D	Drawn	PJN
Date	07/07/2025	Checked	TC