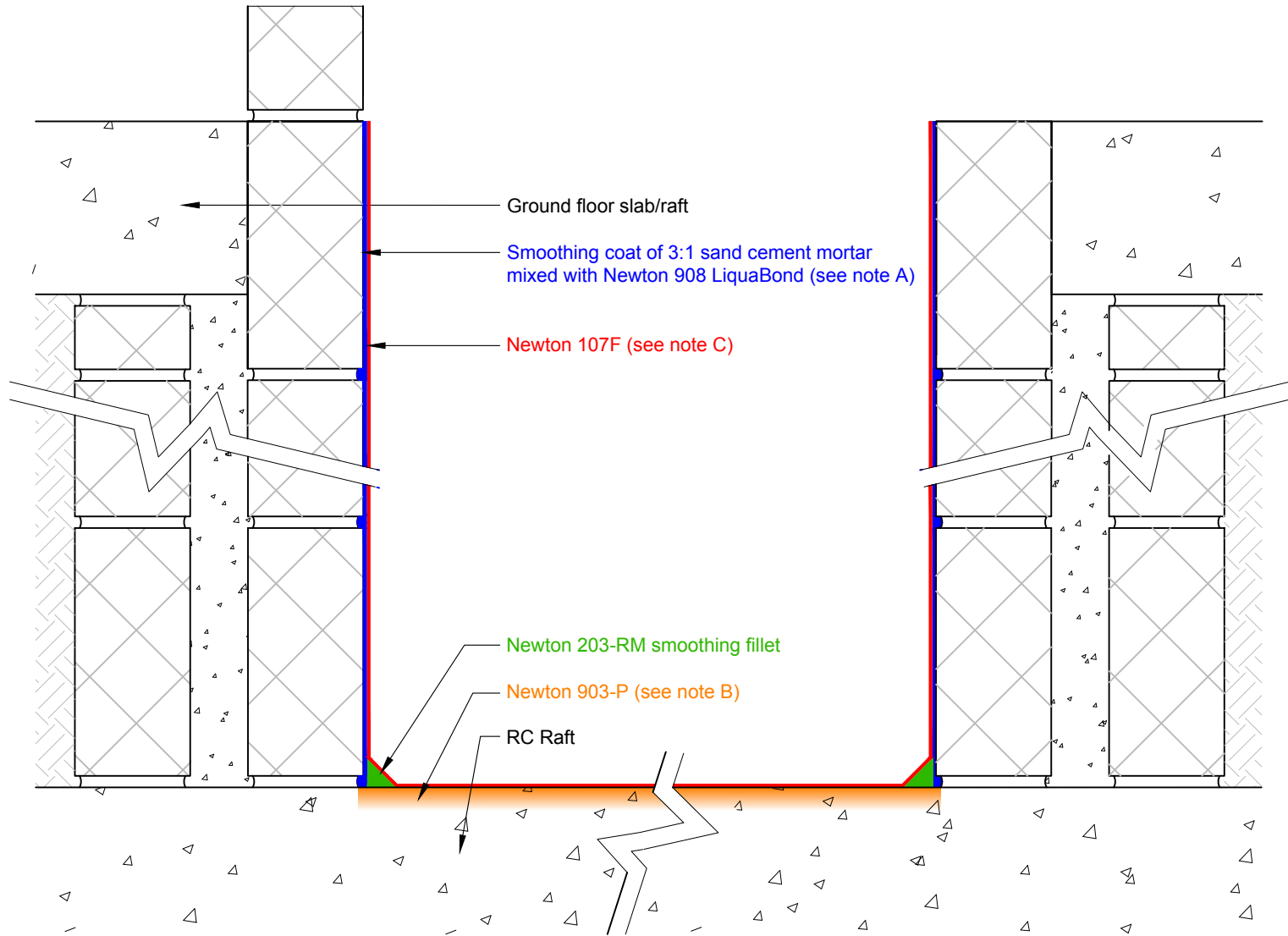


# Section

DO NOT SCALE



## Notes

This drawing shows the waterproofing of a lift pit, sunk below a ground floor slab or raft, utilising products from Newton System 100 and 900. When installed correctly this detail is capable of achieving a Grade 3 environment (BS8102:2009) where water and dampness are not tolerable.

This drawing is not suitable for lift pits within lower ground floor or basement structures where the waterproofing of the pit would need to interface to the basement waterproofing system. Please contact our technical department for advice on waterproofing lift pits within ground retained structures.

A) Newton 908 LiquaBond is mixed with water at 1:2 to form the gauging liquid for the mortar mix. The smoothing coat should be about 10mm in thickness.

A smoothing coat will not be required if the block work is flush pointed or if bucket handle pointing is used so there are no sharp edges.

B) Newton 903-P is a modified styrene/acrylic copolymer primer.

C) Newton 107F is a highly flexible cement based waterproofing slurry.

For confirmation of methodology for fixing through Newton 107F, please refer to drawing CW-D02B.

If a vapour barrier is required please refer to the Newton Technical Department.

To access further details and relevant technical information please call our Technical Team on 01732 360095 or refer to our [website](#).

### Newton HydroSeal System

Waterproofing of lift pit - Type A - 107F - 908 LiquaBond - 903-P - 203-RM

NOTE: This is a Newton waterproofing detail and copyright remains with John Newton & Co. Ltd. (trading as Newton Waterproofing Systems). Any specification/advice provided is only valid if used with products supplied by John Newton & Co. Ltd. For the design of the structure, please use a professional designer. We recommend that Newtons' waterproofing systems are installed by our NSBC registered contractors who can offer insurance backed guarantees and accept liability for both the design and installation of our systems. Please refer to product data sheets before installation of our products. Newton Waterproofing Systems reserve the right to update drawings and product literature at any time.

Scale	Drawing Reference	Original Reference	Drawing Revision
Not to scale	CW-10		b
Date	Designed by	Drawn by	Checked by
14/08/2018	RC	CER	DGB