

Section

DO NOT SCALE

Notes

This drawing shows Newton 803 to the wall as a damp proofing solution.

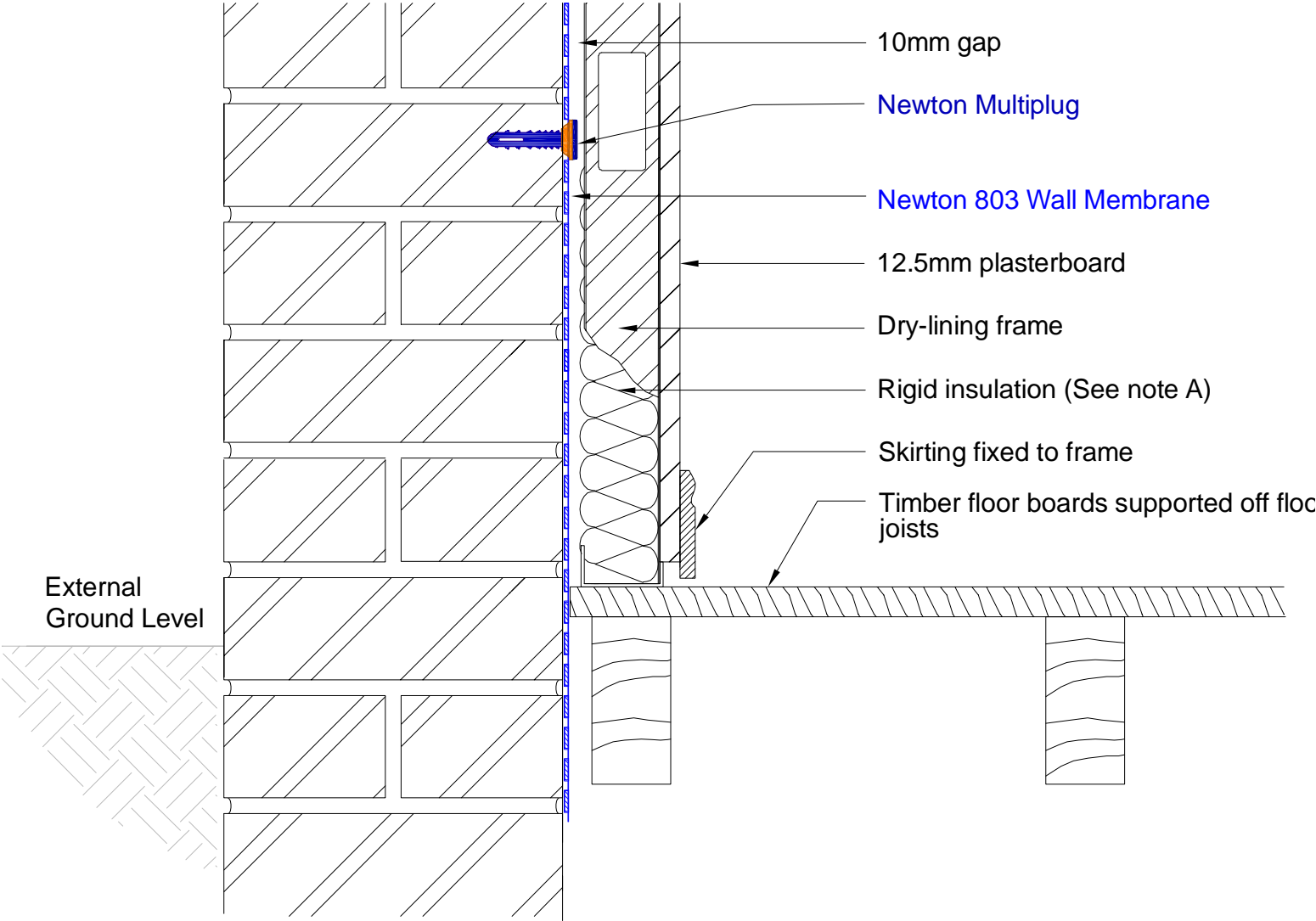
The wall membrane should be extended to just above a viable DPC or 100mm above the height of the recorded rising damp or salt band.

A) If insulating in front of the wall membrane a vapour control layer may be required to prevent interstitial condensation, see Guidance Note GD-01.

To access the details mentioned above, relevant NBS Clauses, product data and MSDS sheets, please visit Technical resources via www.newtonwaterproofing.co.uk

System 800 Damp Proofing

Newton 803 Wall membrane with dry lining frame finish into timber floor void.



NOTE: This is a damp proofing detail. Please refer to product data sheets before installation of our products. Newton Waterproofing Systems reserves the right to update drawings.