

Section

DO NOT SCALE

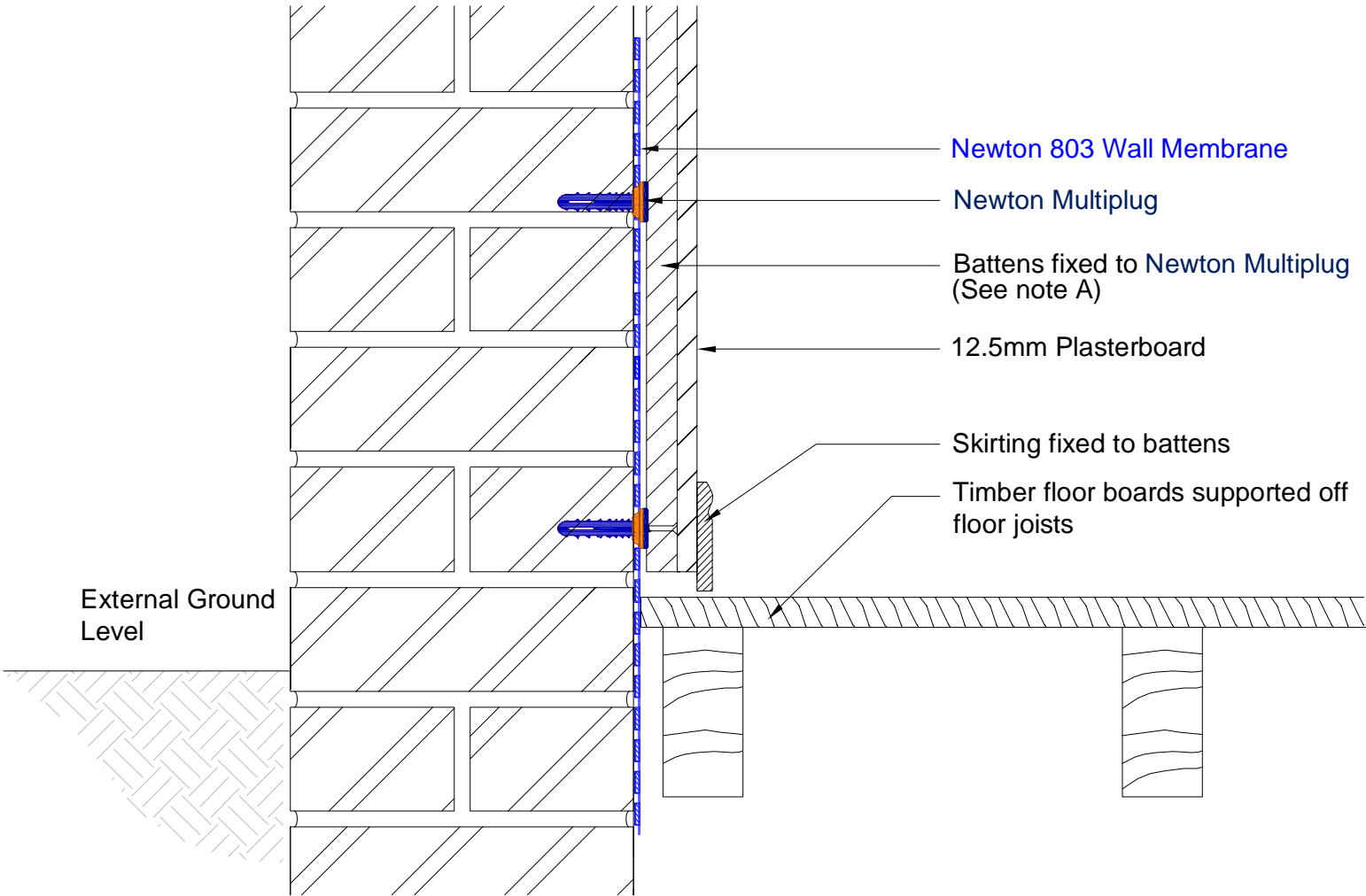
Notes

This drawing shows Newton 803 membrane to the wall as a damp proofing solution.

When Battening, Newton Multiplugs should be fixed at 400mm horizontally and 800 vertically.

A) Screw size to be 25mm longer than the width of the batten

The wall membrane should be extended to just above a viable DPC or 100mm above the height of the recorded rising damp or salt band.



NOTE: This is a Newton damp proofing detail and copyright remains with John Newton & Co. Ltd. (trading as Newton Waterproofing Systems). Any specification/advice provided is only valid if used with products supplied by John Newton & Co. Ltd. For the design of the structure, please use a professional designer. Please refer to product data sheets before installation of our products. Newton Waterproofing Systems reserve the right to update drawings and product literature at any time.

System 800 Damp Proofing

Newton 803 Wall membrane with batten  
finish into timber floor void