

Section

DO NOT SCALE

Notes

This drawing shows Newton 803 membrane to the wall as a damp proofing solution.

When Battening, Newton Multiplugs should be fixed at 400mm horizontally and 800 vertically.

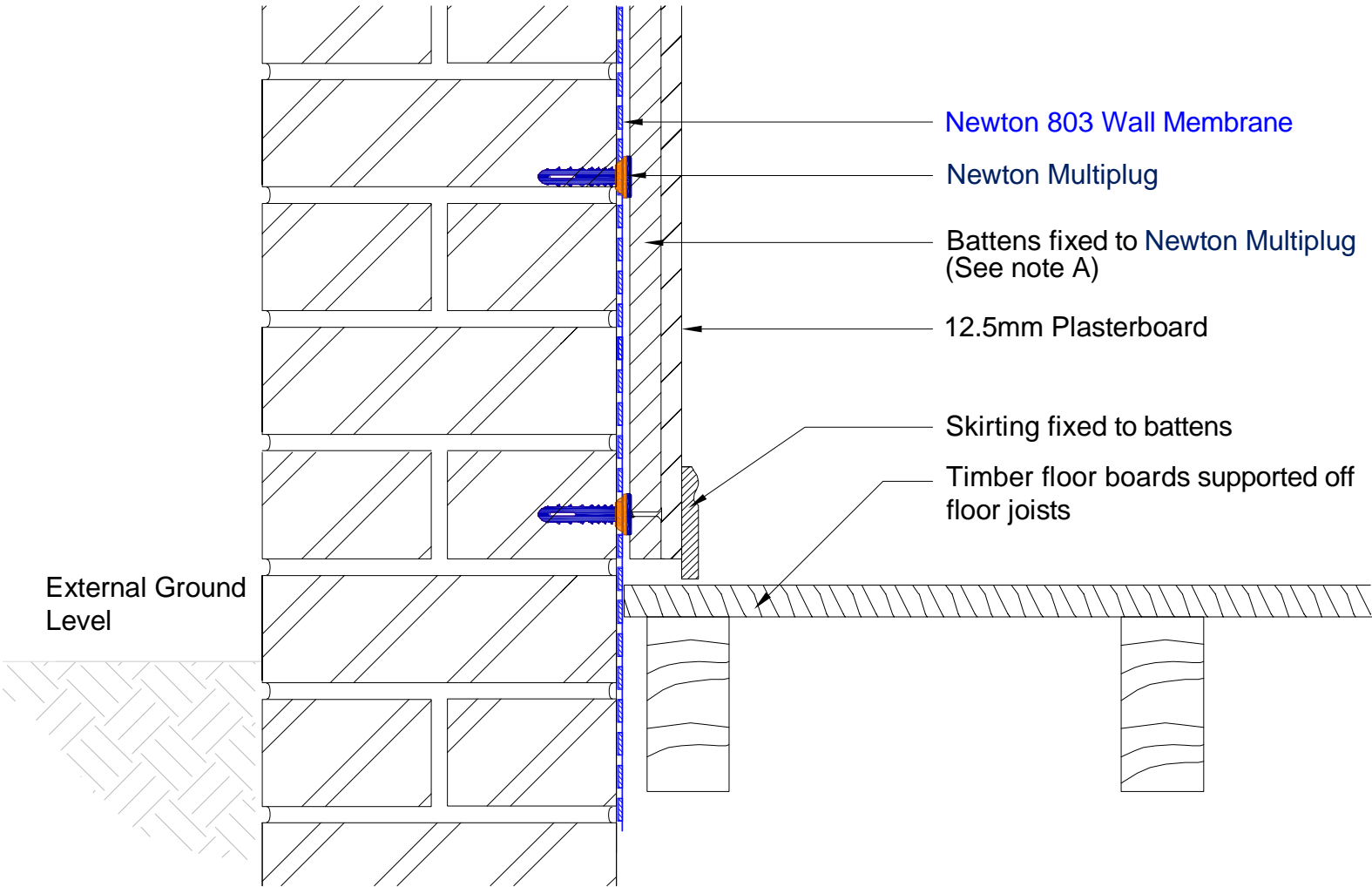
A) Screw size to be 25mm longer than the width of the batten

The wall membrane should be extended to just above a viable DPC or 100mm above the height of the recorded rising damp or salt band.

To access the details mentioned above, relevant NBS Clauses, product data and MSDS sheets, please visit Technical resources via [www.newtonwaterproofing.co.uk](http://www.newtonwaterproofing.co.uk)

System 800 Damp Proofing

Newton 803 Wall membrane with batten finish into timber floor void



NOTE: This is a damp proofing detail. Please refer to product data sheets before installation of our products. Newton Waterproofing Systems reserves the right to update drawings.