

Section

DO NOT SCALE

Notes

This drawing shows Newton 803 Newtonite or Newton 805 Newlath to the wall as damp proofing solution.

The wall membrane should be extended to 100mm above the height of the recorded rising damp or salt band. At the top edge of the membrane ensure that the plasterboard oversails the top of the membrane to the untreated wall by at least 500mm, with staggered joints to adjoining boards.

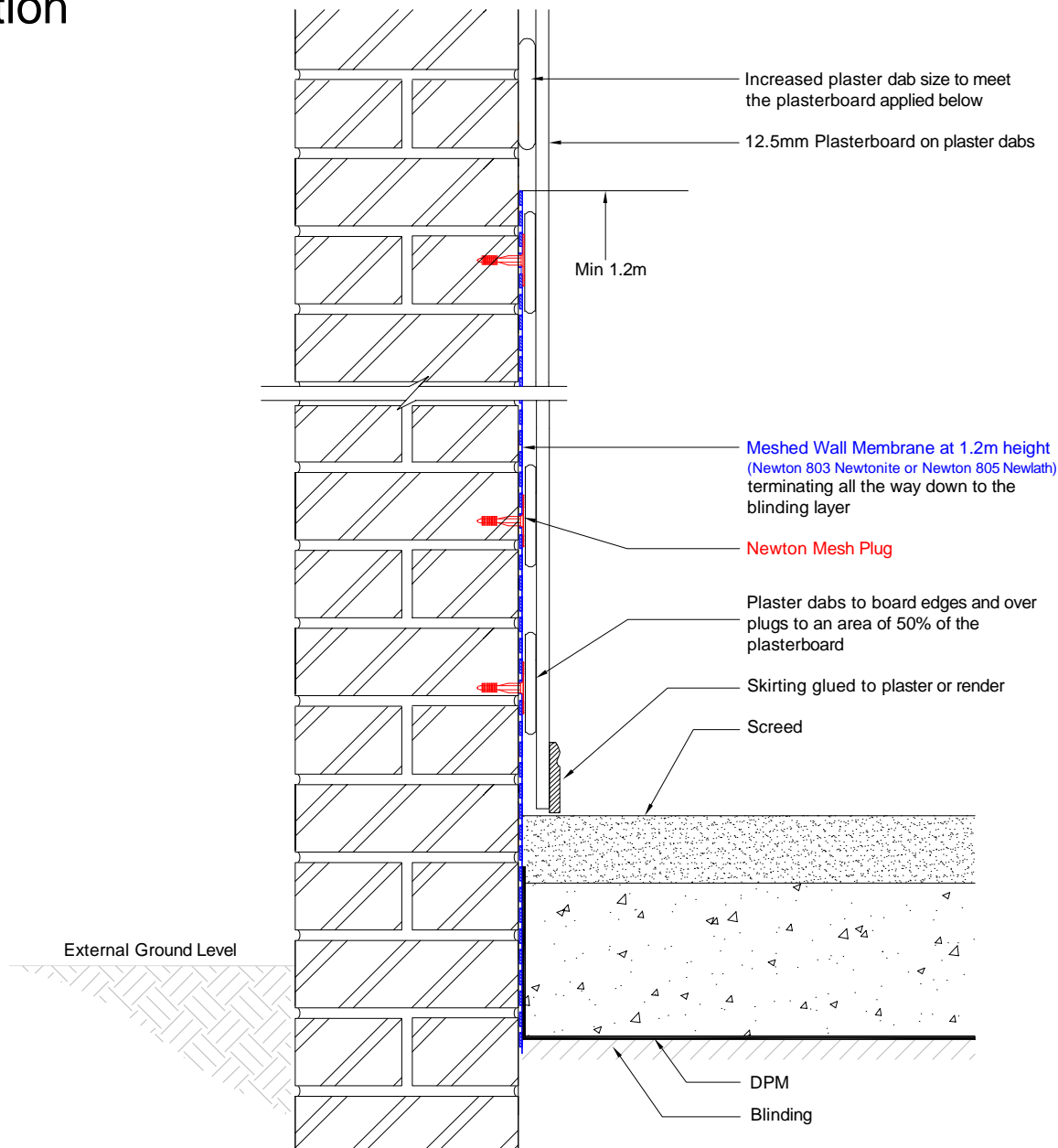
Please refer to plasterboard on dabs specification within the installation instructions of Newton Meshed Membranes.

Newton Mesh Plugs should be fixed at 250-300mm centers.

To access the details mentioned above, relevant NBS Clauses, product data and MSDS sheets, please visit Technical resources via www.newtonwaterproofing.co.uk

System 800 Damp Proofing

Meshed wall membrane with dot & dab finish linking to DPM below slab.



NOTE: This is a damp proofing detail. Please refer to product data sheets before installation of our products. Newton Waterproofing Systems reserves the right to update drawings.