

Section

DO NOT SCALE

Notes

This drawing shows Newton 803 Newtonite or Newton 805 Newlath to the wall sealed to Newton 601 Slimline providing a damp proofing solution to an existing slab. A loose laid membrane requires a minimum of 65mm screed.

Newton Mesh plugs should be fixed at 250 - 300mm centers.

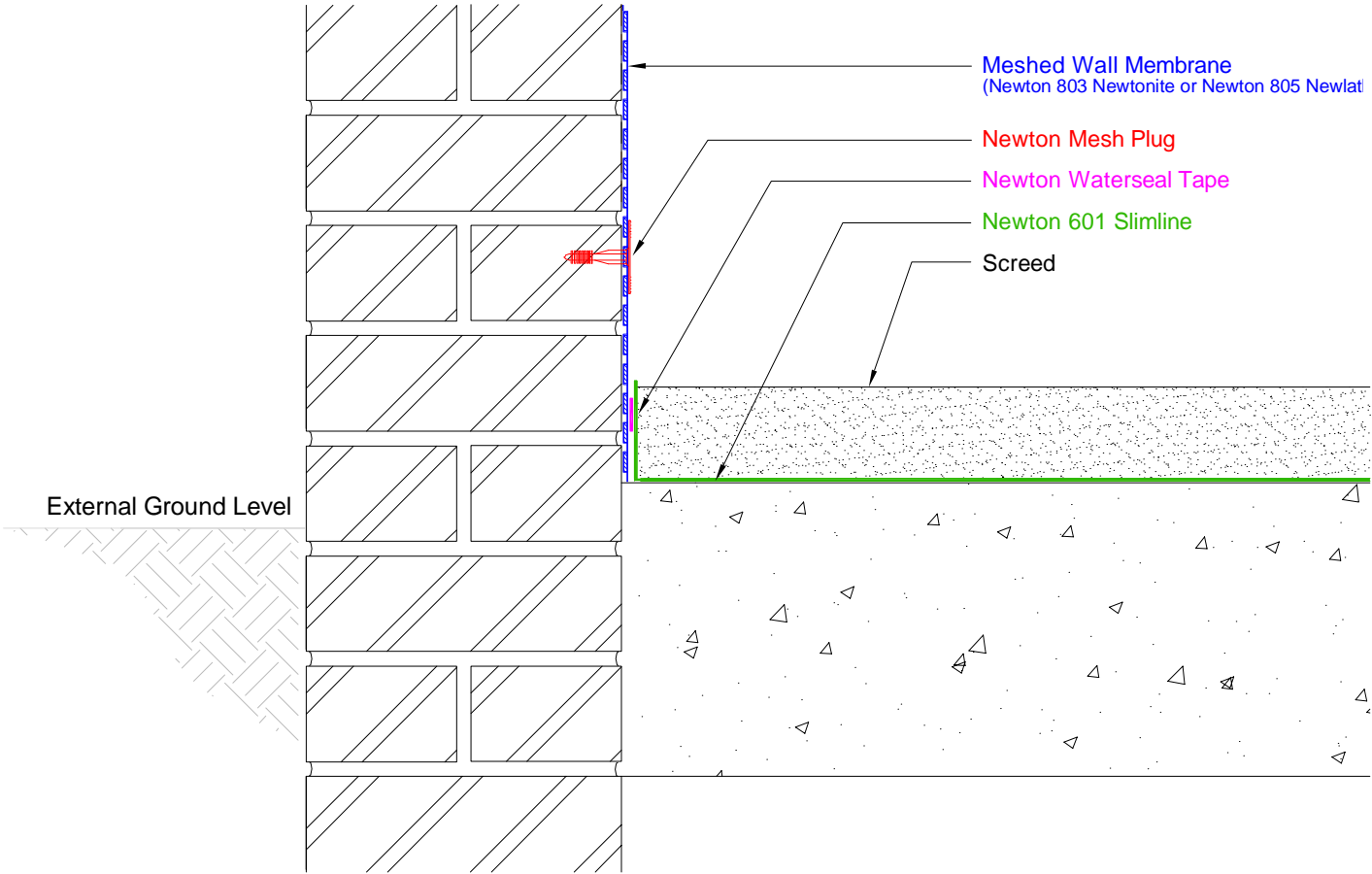
The wall membrane should be extended to just above a viable DPC or 100mm above the height of the recorded rising damp or salt band.

Please refer to plastering and rendering specifications within the installation instructions of Newton Meshed Membranes.

To access the details mentioned above, relevant NBS Clauses, product data and MSDS sheets, please visit Technical resources via [www.newtonwaterproofing.co.uk](http://www.newtonwaterproofing.co.uk)

System 800 Damp Proofing

Meshed membrane linking to 601 above slab with screed finish



NOTE: This is a damp proofing detail. Please refer to product data sheets before installation of our products. Newton Waterproofing Systems reserves the right to update drawings.