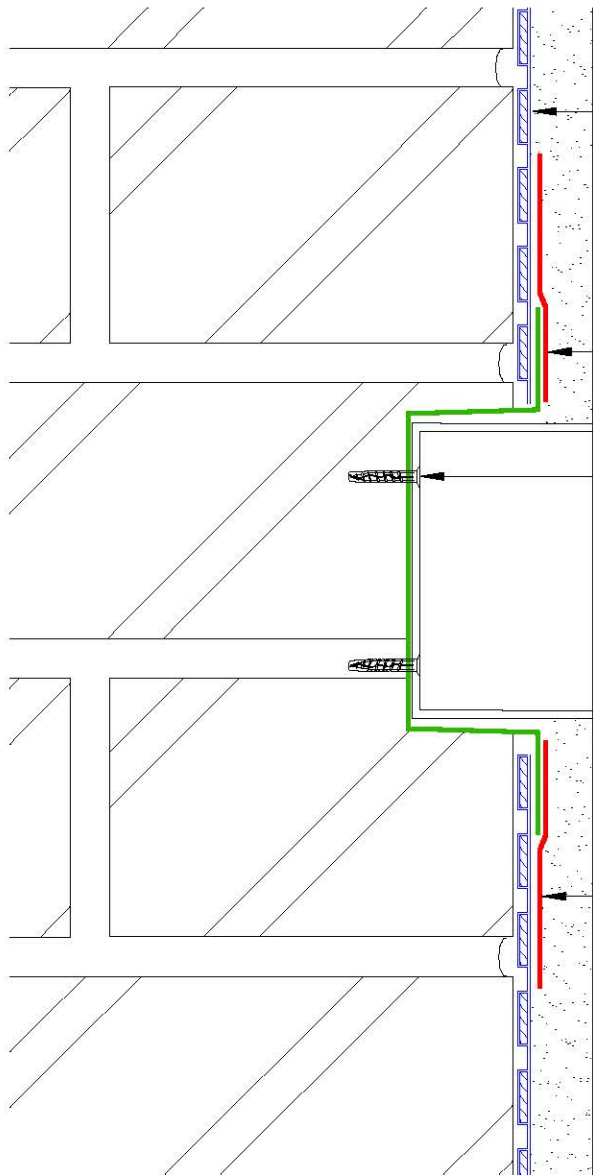


Section

DO NOT SCALE



Meshed Wall Membrane
(Newton 803 Newtonite or Newton 805 Newlath)

Newton Back-Box Liner

Self tapping screw, screw hole primed with
Newton Mastic (See note A)

Pattern box &
socket/front plate

Newton Mesh Tape

Render of six parts sand, one part cement
and one part lime OR Tarmac Whitewall
OR 3.5 NHL lime plaster

Notes

This detail shows Newton System 800 Meshed damp proofing membrane with a Newton Back-Box Liner protecting an electric socket recessed within a wall. For details of the Newton Back-Box Liners please refer to DP-D06.

The wall membrane should be extended to just above a viable DPC or 100mm above the height of the recorded rising damp or salt band.

Please refer to plastering and rendering specifications within the installation instructions of Newton Meshed Membranes.

A) Seal the head of the screws with a bead of Newton Mastic once the box has been fitted.

Newton Mesh Plugs should be fixed at 250-300mm centres.

To access further details and relevant technical information please call our Technical Team on 01732 360095 or refer to our [website](http://www.newtonwaterproofing.co.uk).

System 800 Damp Proofing

Damp proofing recessed socket

NOTE: This is a Newton damp proofing detail and copyright remains with John Newton & Co. Ltd. (trading as Newton Waterproofing Systems). Any specification/advice provided is only valid if used with products supplied by John Newton & Co. Ltd. For the design of the structure, please use a professional designer. Please refer to product data sheets before installation of our products. Newton Waterproofing Systems reserve the right to update drawings and product literature at any time.