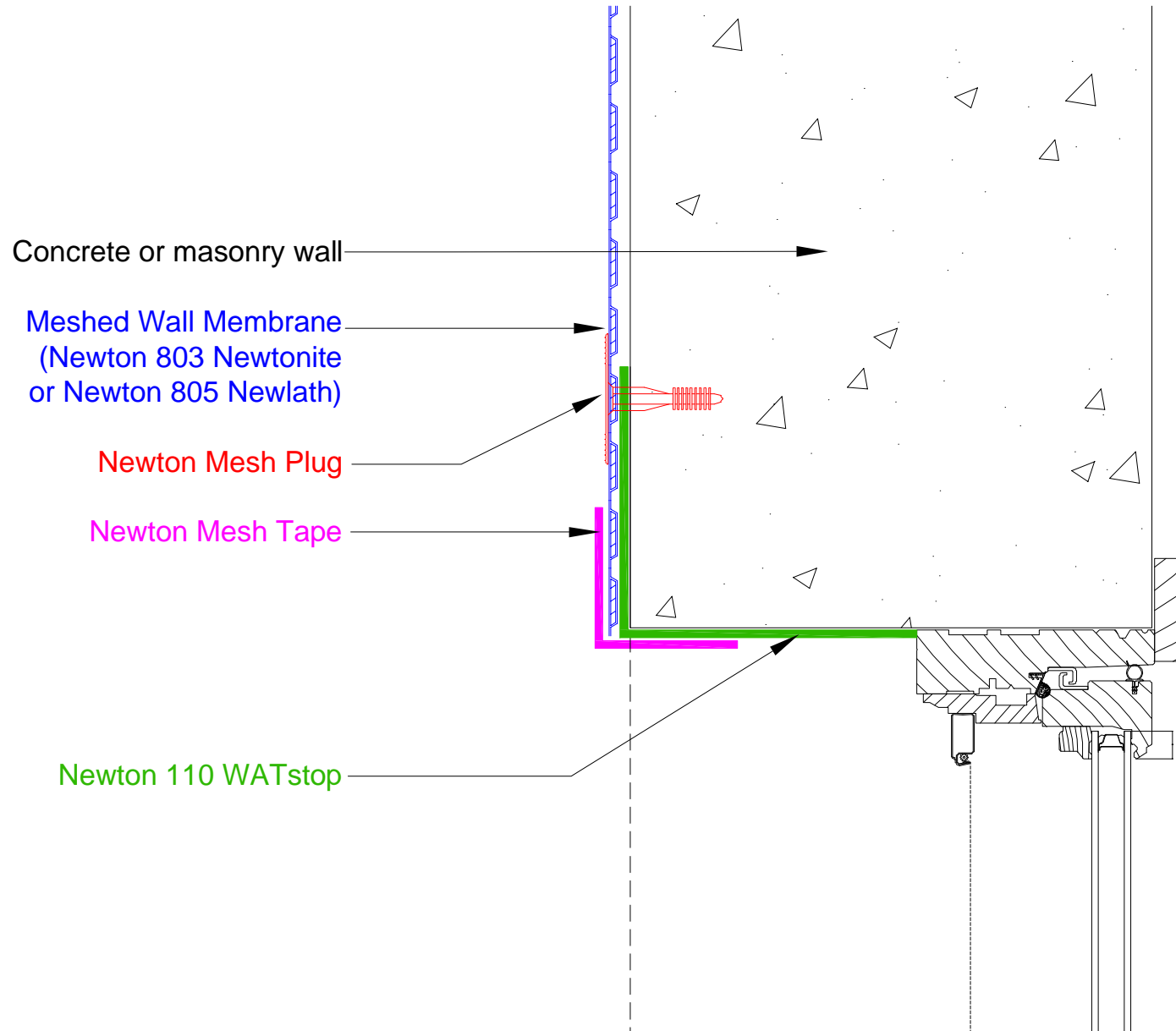


Plan

DO NOT SCALE



Concrete or masonry wall

Meshed Wall Membrane
(Newton 803 Newtonite
or Newton 805 Newlath)

Newton Mesh Plug

Newton Mesh Tape

Newton 110 WATstop

Notes

This detail shows Newton 803 Newtonite or Newton 805 Newlath wall membrane applied to a window reveal in plan, utilising Newton 110 WATstop to create a continuous barrier.

Both options are applied to the window reveal and returned 50mm to the main wall surface.

Newton 110 WATstop is a 3 part epoxy/cement waterproofing membrane that is applied to the reveal at a thickness of approx 1mm but can be applied thicker if required and has the capability to fill deviations, holes and cracks as a mortar. Newton 110 WATstop can be painted or render/plastered onto to create a suitable finish to the reveal so acts as both a damp proofing barrier and a reveal finish in one application.

Newton Mesh Plugs should be fixed at 250-300mm centres.

To access the details mentioned above, relevant NBS Clauses, product data and MSDS sheets, please visit Technical resources via www.newtonwaterproofing.co.uk

System 800 Damp Proofing

Window reveal meshed membrane

NOTE: This is a damp proofing detail. Please refer to product data sheets before installation of our products. Newton Waterproofing Systems reserves the right to update drawings.