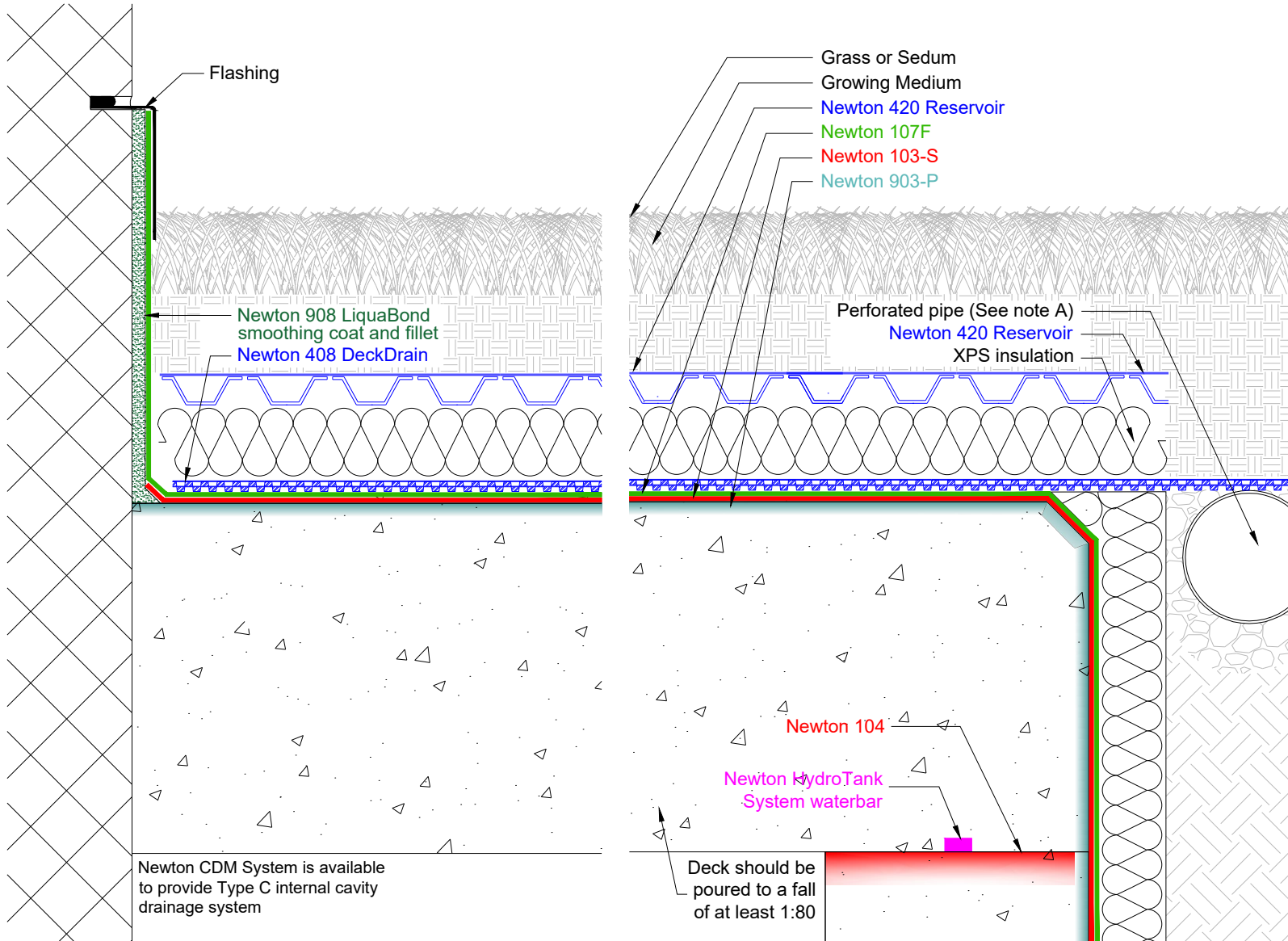


Section

DO NOT SCALE

Notes



Newton CDM System is available to provide Type C internal cavity drainage system

Deck should be poured to a fall of at least 1:80

This drawing shows an Extensive Green roof specification where Newton 103-S and Newton 107F are providing the primary waterproofing to an Inverted Warm Reinforced concrete Deck.

The reinforced concrete deck must be designed and installed to BS EN 1992-3 (Eurocode 2) with Newton System 300 water bars where possible in all construction joints.

Formwork must be struck after 28 days for full concrete strength. No more than engineer designed loads to be applied during construction phase, i.e. no storage.

Newton 103-S is a two component, thixotropic, cementitious modified polymer waterproofing slurry.

Newton 107F is a highly flexible cement based waterproofing slurry.

Newton 912-RT reinforcement tape to be used to reinforce Newton 103-S and Newton 107F across construction joints and any changes in direction.

Newton 903-P is a modified styrene/acrylic copolymer primer for concrete applied prior to the installation of the Newton 103-S to minimise the risk of out-gassing and to increase bond.

Newton 408 DeckDrain provides a drainage layer to prevent water logging and to ensure that standing water is not present above the waterproofing membrane.

Newton 420 Reservoir has 20mm water holding cups for the vegetation above and also provides a drainage layer to prevent water logging and to ensure that standing water is not present above the waterproofing membrane.

A) The deck should be engineer designed to provide adequate rainwater disposal to suitable drainage outlets.

To access further details and relevant technical information please call our Technical Team on 01732 360095 or refer to our [website](#).

Newton DeckFlex System

Upstand - Waterproofing of RC Deck - Extensive Green Roof - 903-P - 103-S - 107F-912-RT - 408 DeckDrain - 420 Reservoir

NOTE: This is a Newton waterproofing detail and copyright remains with John Newton & Co. Ltd. (trading as Newton Waterproofing Systems). Any specification/advice provided is only valid if used with products supplied by John Newton & Co. Ltd. For the design of the structure, please use a professional designer. We recommend that Newtons' waterproofing systems are installed by our NSBC registered contractors who can offer insurance backed guarantees and accept liability for both the design and installation of our systems. Please refer to product data sheets before installation of our products. Newton Waterproofing Systems reserve the right to update drawings and product literature at any time.

Scale	Drawing Reference	Original Reference	Drawing Revision
Not to scale	DW-GE-02A		a
Date	Designed by	Drawn by	Checked by
02/03/2020	CER	JRN	RC