

Section

DO NOT SCALE

Notes

This drawing shows shows the termination of Newton 108 HydroBond-LM used as a Type A primary waterproofing membrane. The structure should be constructed to BS EN 1992 (Eurocode 2), and of sufficient mass and quality so as able to resist heads of water pressure as required by BS8102.

Use in conjunction with Newton drawings H-01, H-04, H-SEC.

This system is suitable for Grades 1, 2 and 3 of the environmental table within BS8102:2009.

The system can be used with further Newton products and systems such as:

- Newton System 300 Waterbar Type B protection further waterproofs the structure by preventing water ingress at construction joints.
- Newton System 500 Type C protection provides failsafe protection by forming an internal depressurisation system.

Please speak to our technical department for further information.

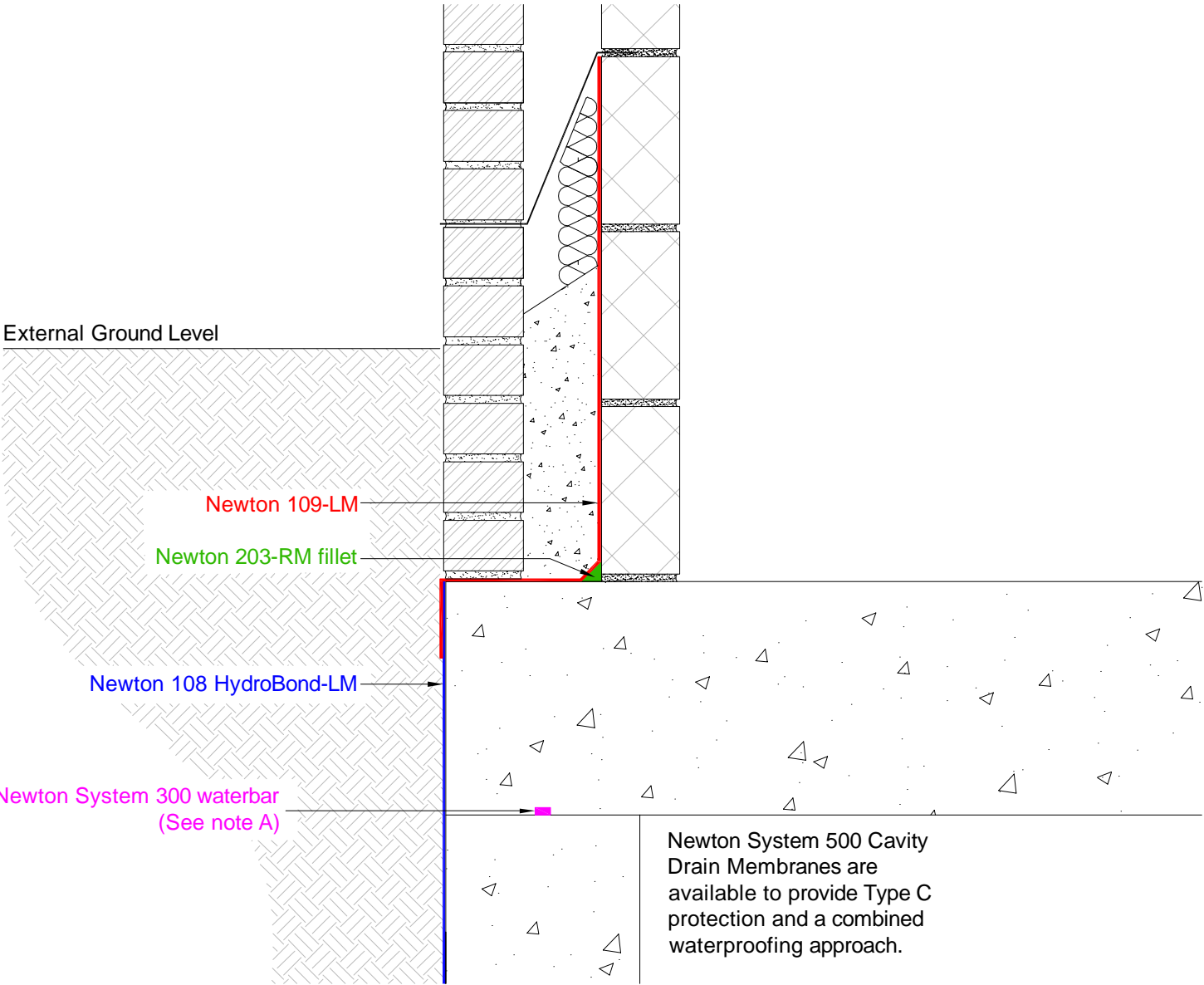
It is recommended that all DPC's are installed to relevant British Standards codes of practice.

A) Newton System 300 Waterbar secured to concrete using Newton 309 Contact Adhesive or Newton 306 Swellmastic.

To access further details and relevant technical information please call our Technical Team on 01732 360095 or refer to our [website](#).

Newton HydroBond® System

Termination to above ground - Type A - External - 108 HydroBond-LM - 109-LM - 203-RM



NOTE: This is a Newton waterproofing detail and copyright remains with John Newton & Co. Ltd. (trading as Newton Waterproofing Systems). Any specification/advice provided is only valid if used with products supplied by John Newton & Co. Ltd. For the design of the structure, please use a professional designer. We recommend that Newtons' waterproofing systems are installed by our NSBC registered contractors who can offer insurance backed guarantees and accept liability for both the design and installation of our systems. Please refer to product data sheets before installation of our products. Newton Waterproofing Systems reserve the right to update drawings and product literature at any time.