



Hotel Football, Manchester

Structural Waterproofing of Innovative New-Build Hotel

The Project

The "Hotel Football" is an innovative hotel concept on the doorstep of Old Trafford football stadium. The 138-bed Hotel Football will feature a five-a-side pitch on the roof and house a supporters' club with the 10-storey building having capacity for around 1,500 fans on match days.

Waterproofing provision was a very important factor when designing the hotel due to its riverside location, and Newton Specialist Basement Contractor Trace Basements were appointed at the design stage.

The Solution

NSBC Trace Basements were commissioned to design and install a waterproofing solution throughout the new structure. In the first phase, the Newton System 500 Cavity Drain Waterproofing System was applied internally to deal with any water ingress.

The highly complex waterproofing project then required an application of Newton 101F to the construction joints, before Newton 104 Crystalline was applied to the entire concrete slab to provide primary resistance to the penetration of water.

The Result

The large building was entirely protected against water ingress and Trace Basements provided full professional indemnity insurance to give the client complete peace of mind.



Aerial view of Hotel Football.



Newton System 500 was installed to protect from water ingress.



"Newton Waterproofing Systems offer a complete wrap-around service to its specialist contractor network both in range of products and quality of technical and practical application support.

They are continually looking to innovate, enhance and improve their range of products."

Bill Hockey, Trace Basements

The Products

CDM SYSTEM

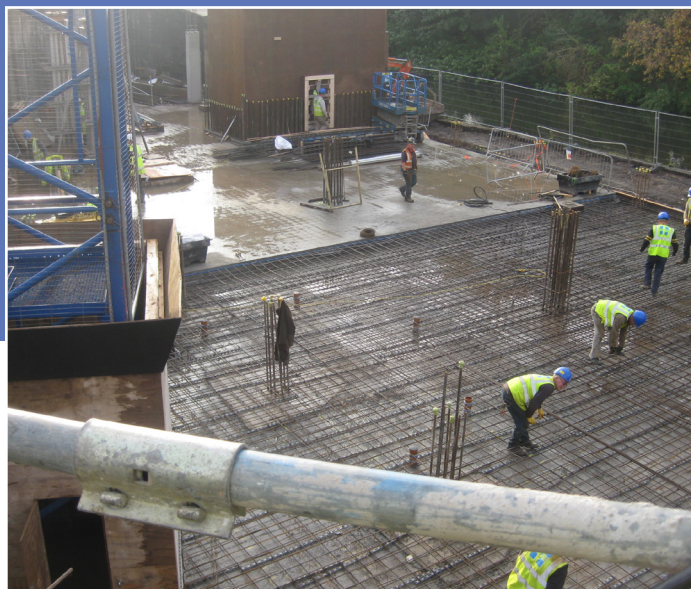
The most reliable waterproofing solution for any space below ground, the Newton CDM System combines decades of experience with the highest quality, BBA certified membranes from Newton System 500, bespoke sump and pump configurations, back-up systems, telemetry and ancillaries.

101F

A two-component acrylic modified cementitious coating. It is the ideal product to waterproof and re-surface concrete and masonry. 101F is a hard wearing, seamless waterproofing solution which is very user friendly with simple on-site mixing methods.

104 CRYSTALLINE

Applied to the surface of concrete, Newton 104 provides an in-depth protection against the movement of moisture through the capillaries and hairline cracks within the concrete.



Proximity to the canal meant a robust waterproofing system was needed.



Artists impression of the Hotel Football, courtesy of the Mirror.



Newton 101F applied to the outer face of construction joints.

Newton Specialist Basement Contractors

Newton recommends that our systems are installed by one of our nationwide network of Newton Specialist Basement Contractors (NSBCs). Trained by Newton, NSBCs offer a full guarantee on the design and installation, and can act as Waterproofing Design Specialists.



www.newtonwaterproofing.co.uk



tech@newtonwaterproofing.co.uk



+44 (0)1732 360 095