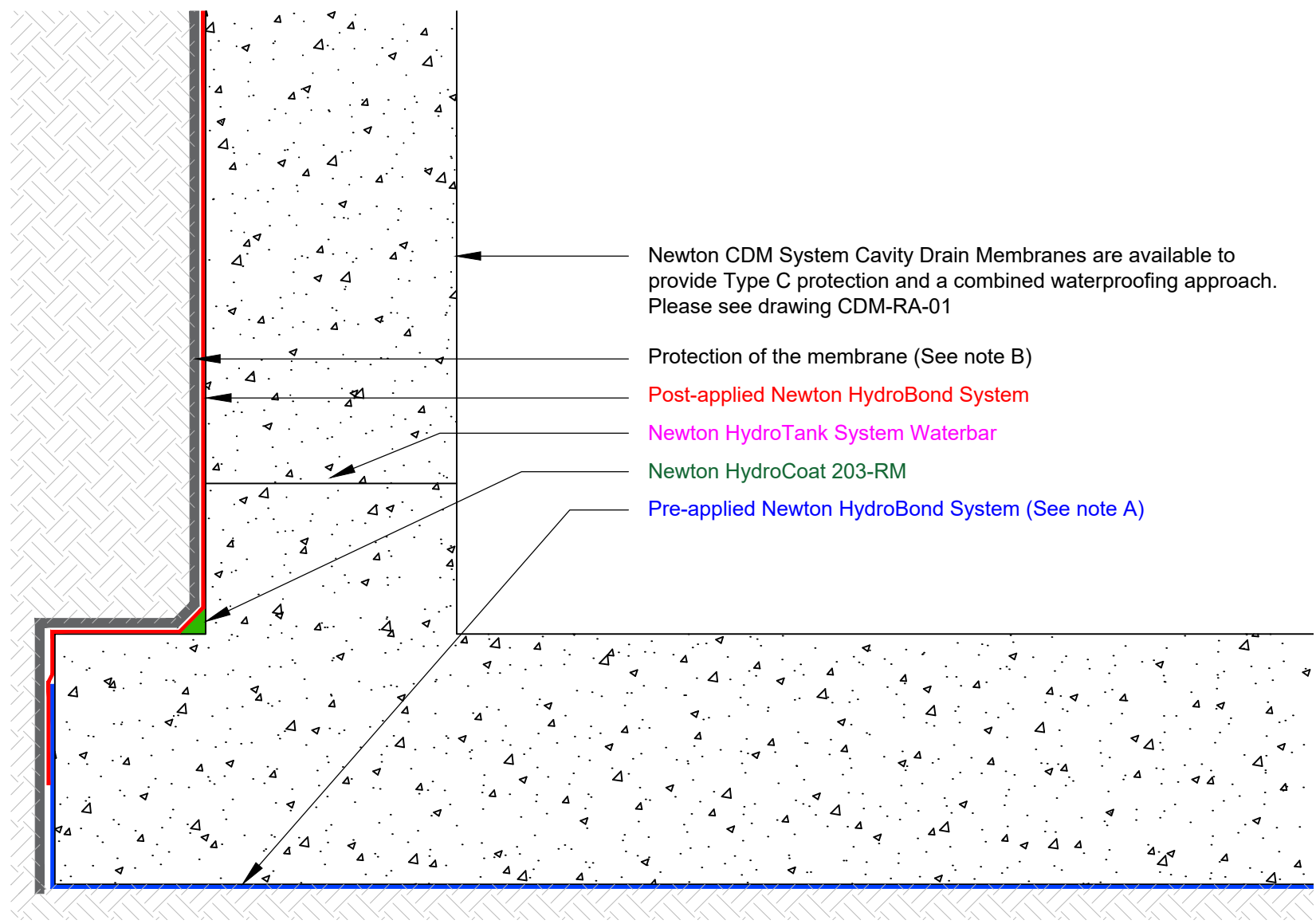


SECTION

DO NOT SCALE

Notes



Newton CDM System Cavity Drain Membranes are available to provide Type C protection and a combined waterproofing approach. Please see drawing CDM-RA-01

Protection of the membrane (See note B)

Post-applied Newton HydroBond System

Newton HydroTank System Waterbar

Newton HydroCoat 203-RM

Pre-applied Newton HydroBond System (See note A)

This drawing shows a typical method of waterproofing a raft foundation RC structure. Construction should be to BS EN 1992 (Eurocode 2) and capable of resisting heads of water pressure as required by BS8102.

- A. Newton Pre-applied HydroBond is a mechanically bonded and self-healing membrane that is pre-applied ready for the placement of the concrete raft to a suitable smooth sound substrate such as a concrete blinding, closed cell insulation, void former system or drainage membrane such as Newton 410 GeoDrain.
- B. Backfill protection using Backfill Protection Board, suitable closed cell insulation such as Newton Fibran XPS 500-C or Newton 410 GeoDrain if a drainage board is preferred, please see drawing A-01.

To access further details and relevant technical information please call our Technical Team on 01732 360 095 or refer to our [website](#).

NOTE: This is a Newton waterproofing detail and copyright remains with John Newton & Co. Ltd. (trading as Newton Waterproofing Systems). Any specification/advice provided is only valid if used with products supplied by John Newton & Co. Ltd. For the design of the structure, please use a professional designer. We recommend that Newtons' waterproofing systems are installed by our NSBC registered contractors who can offer insurance backed guarantees and accept liability for both the design and installation of our systems. Please refer to product data sheets before installation of our products. Newton Waterproofing Systems reserve the right to update drawings and product literature at any time.

Reference	HB-03B	Designed	AJG
Revision	A	Drawn	AJG
Date	19/10/2023	Checked	