

Commercial Injection Resin Repair Basement Injection Waterproofing, London

The Project

As part of this new-build development on Blackfriars Road in Southwark by a major UK residential developer, a large 2.5m x 1m fibreglass tank had been installed in the basement.

However, during the concrete pour the tank had developed a large crack in the base, allowing a steady and high-volume flow of water into the tank.

The Solution

The contractor called upon Newton's new range of high-quality injection resins, as well as specialist injection contractor [ASF Waterproofing](#) to remedy the situation.

ASF Waterproofing observed that to slow the water down, drive packers needed to be inserted into the substrate around the tank to a depth of 2.5m, and injected with [Newton 320-FP](#) polyurethane sealing resin. This new resin reacts extremely quickly on contact with water, foaming to provide a rigid, high-strength seal that rapidly stems water ingress.

Once the flow of water was brought to a complete stop by the 320-FP resin, ASF Waterproofing then injected around the crack itself. This was achieved by installing Sheet Pile Packers and injecting the substrate with the flexible sealing polyurethane [Newton 322-SP](#) injection resin in order to fill any remaining voids and provide the final seal.

The Result

In just one day on site, Newton and ASF Waterproofing identified the correct products required to stem the flow of water, then seal the crack completely. Newton's new range of injection resins are also applicable in all construction scenarios requiring leak sealing and/or structural repairs.



The cracked tank was allowing ingress of groundwater.



Packers were drilled into the slab to a depth of 2.5m.



"As a contractor with years of experience using injection resins for remedial repairs and waterproofing, we know what we're doing - the new injection resin products from Newton are therefore spot on as they cover a good number of different capabilities, meaning they've got a product for almost any injection resin requirement."

Shaun King, Director, ASF Waterproofing
Newton Specialist Contractor

The Products

320-FP

A low-viscosity, single component, foaming polyurethane injection resin that reacts with water to form a rigid and hydrophobic seal against water ingress.

Thanks to the closed-cell, rigid foam that is created when the resin reacts with water, 320-FP is perfect for stemming water ingress at joints, cracks, voids and defects within concrete structures, as well as for sealing water leaks through steel piled walls.

322-SP

An extremely low-viscosity, two-component polyurethane injection resin that can be used either to create a flexible and resilient seal in both wet and dry structural cracks, or as the sealing resin within an injection hose waterbar to provide Type B structural waterproofing protection.

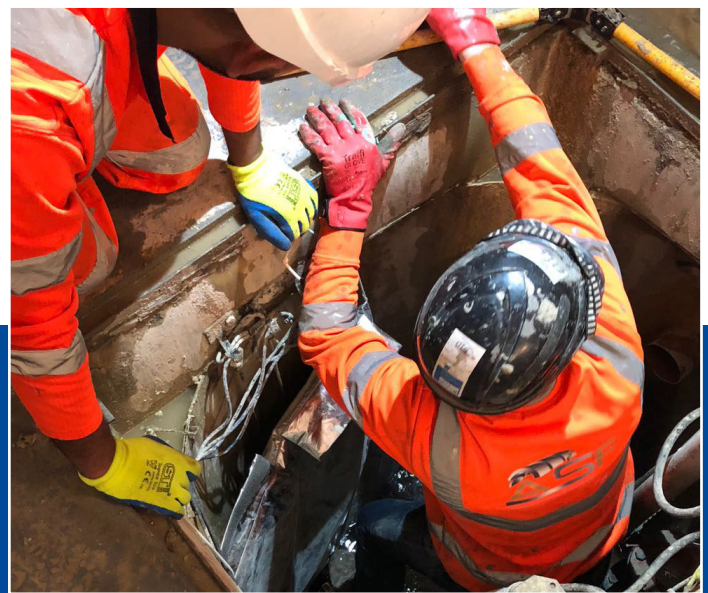
As this resin does not require water to create a seal, and thanks to its excellent adhesion to both concrete and metal, 322-SP is ideal for injecting into fine cracks, and for sealing wet and dry cracks in the walls and floors of concrete structures, tunnels and sewer pipes. The flexibility of the cured resin will also cater to potential movement within joints.



Newton 320-FP, a single-component product, is quick and easy to use.



The 320-FP reacted with the ground water to quickly provide a seal.



Job done - both resins provided a successful seal against water.

Newton Specialist Basement Contractors

Newton recommends that our systems are installed by one of our nationwide network of Newton Specialist Basement Contractors (NSBCs). Trained by Newton, NSBCs offer a full guarantee on the design and installation, and can act as Waterproofing Design Specialists.



www.newtonwaterproofing.co.uk



tech@newtonwaterproofing.co.uk



+44 (0)1732 360 095