



WATERPROOFING RETAINING BASEMENTS ON A SLOPING SITE

Protecting Three Partially Retaining Basements in Hampshire

THE VINERY DEVELOPMENT

Newton contractor [Rymill Property Developments](#) were approached by the owner of an old vineyard in Hampshire, in order to redevelop the site.

As well as building an immaculate four-bedroom, four-bathroom Georgian house for the client, Rymill also took on the task of creating 3 brand new, modern properties, all with basements built into the existing sloping site.

The large, partially retained basement areas would all house a stairwell, plant room, storage room, cinema room, zen room, two ensuite double bedrooms and a garden room, and so required a completely dry internal environment.

THE WATERPROOFING SOLUTION

In order to effectively deliver a series of completely dry basements, a combination of Type A and Type C waterproofing systems were required.

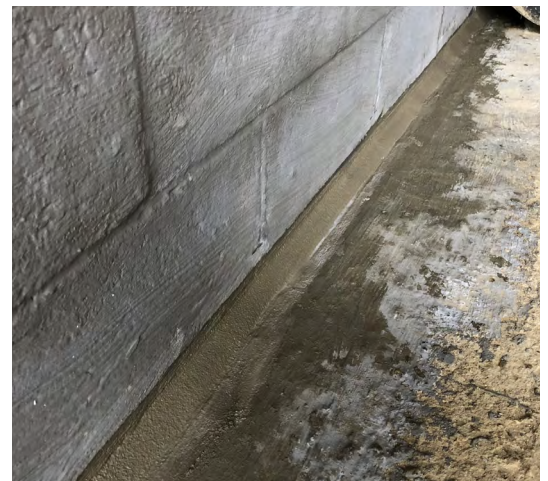
After first applying a tack coat of [HydroCoat 908-LB](#) to assist with bonding, Rymill installed [HydroCoat 103 2K](#) as a high performance, cementitious Type A barrier membrane to the internal surface of the earth retaining walls.

[HydroCoat 203-RM](#) was also used as a smoothing fillet at the new wall-floor junction, and [CDM 906 Lime Inhibitor](#) was applied to the new concrete slab to prevent the 'leaching' of free lime prior to installing the Type C system.

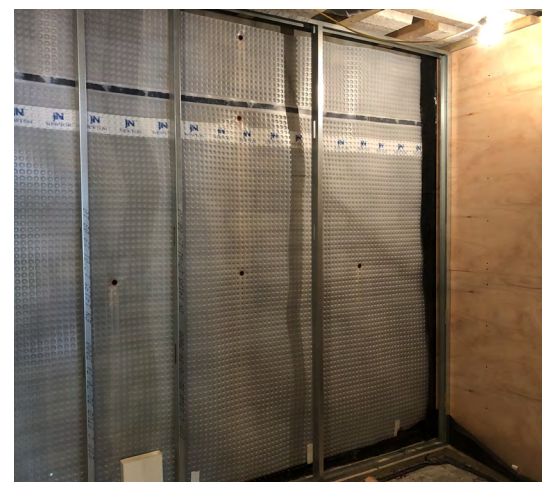
Lastly, Rymill installed the comprehensive [CDM System](#) - the failsafe solution. The maintainable system included the [CDM 508](#) and [CDM 520 eco](#) membranes, as well as Newton's specialist insulation [CDM Fibran XPS 500-C](#), and [CDM BaseDrain](#) to ensure that the system is maintainable in the future.

THE RESULT

The installation of all Newton products by Rymill went smoothly from start to finish, successfully delivering three completely dry basements that were suitable for their intended use, as per [British Standard 8102:2022](#). As a result of the high quality and successful build, all three properties were sold at above the asking price as soon as they went onto the market.



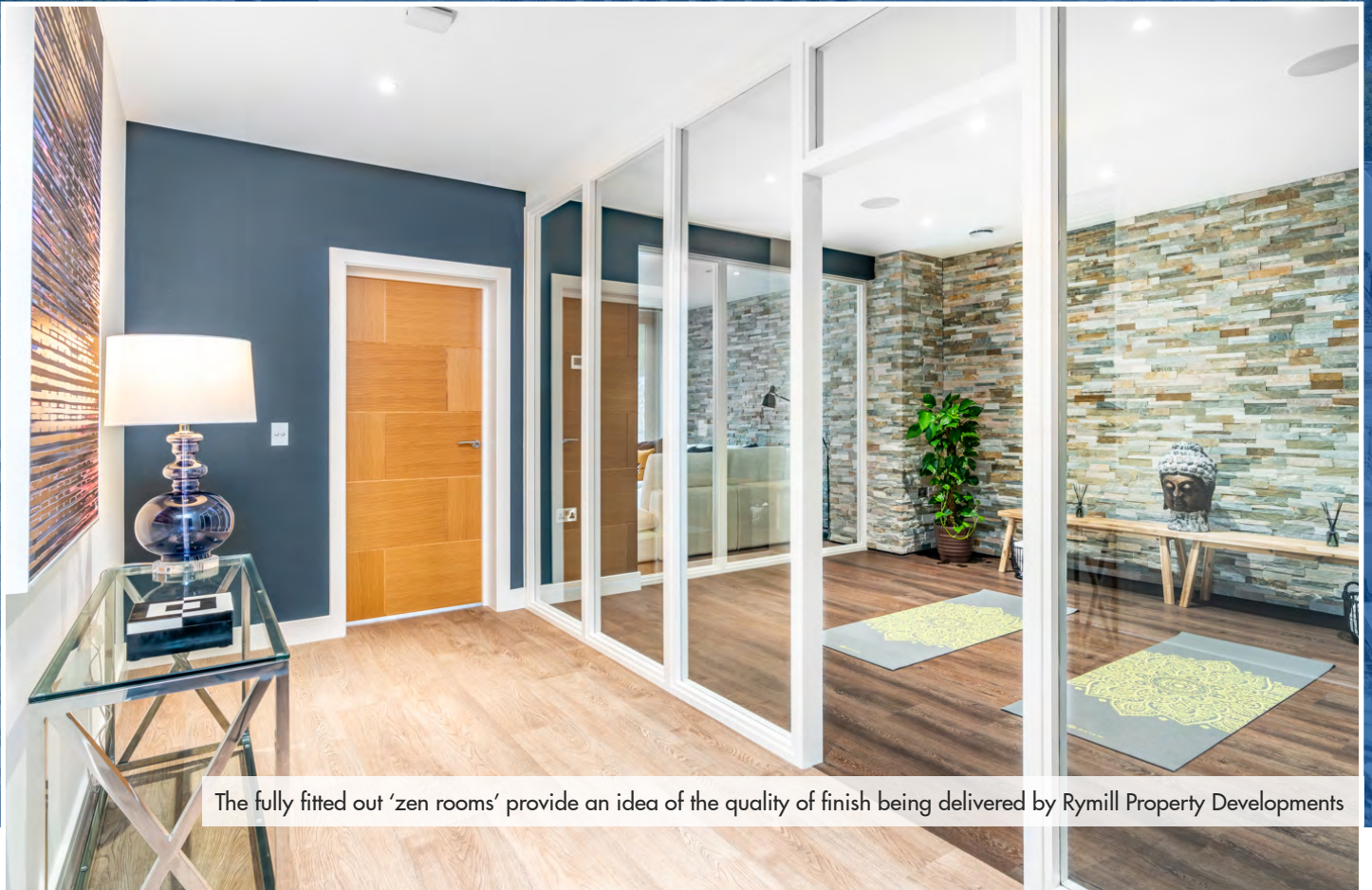
Correct preparation of the substrate is always important



The CDM System forms a failsafe internal solution



The basement cinema rooms were on the fully retained side of the basement, where effective waterproofing was essential



The fully fitted out 'zen rooms' provide an idea of the quality of finish being delivered by Rymill Property Developments

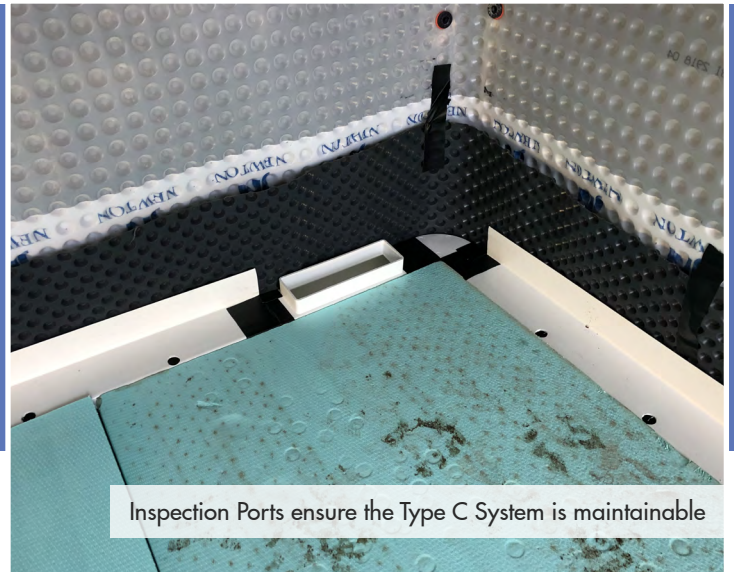
Waterproofing Retaining Basements on a Sloping Site

Protecting Three Partially Retaining Basements in Hampshire

"Newton were brilliant, from helping us with product-specific training to working with the project architect on the waterproofing design. It was also overseen by Test Valley Borough Council and LABC Building Warranties, both of whom were happy with the waterproofing.

As a result, the installation went seamlessly in each property, despite the challenging site, and we are very proud to have delivered The Vinery to its new owners."

Ian Rymill, Company Director
Rymill Property Developments



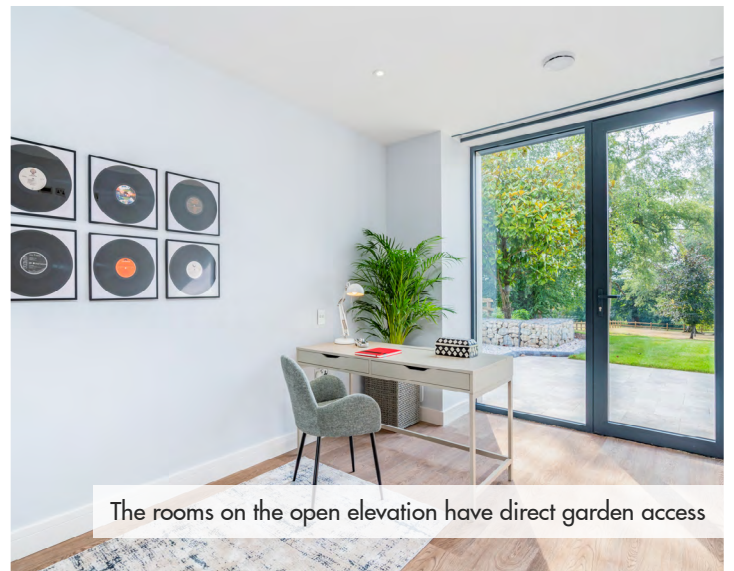
Inspection Ports ensure the Type C System is maintainable

THE PRODUCTS

- [HydroCoat 908-LB](#) - Acrylic bonding agent and admixture
- [HydroCoat 103 2K](#) - High performance cementitious waterproof coating
- [HydroCoat 203-RM](#) - Rapid-setting and high strength repair mortar
- [CDM 906 Lime Inhibitor](#) - Lime Inhibitor for New Concrete
- [CDM System](#) - Cavity Drain Membrane 'Type C' Waterproofing Solution

THE CONTRACTOR

Rymill Property Developments



The rooms on the open elevation have direct garden access

Newton Approved Contractors

We recommend that our systems are installed by one of our nationwide network of approved contractors. Trained by us, approved contractors are expert installers of our specialist waterproofing systems and can offer a full guarantee on the installation.



The garden room on the open elevation of the basement