

Type A Waterproofing

A-18 SPECIFICATION SHEET

External Waterproofing of Hollow Block Walls

Rev 3.0 - 12 April 2023

BUILD

WALL CONSTRUCTION:

Hollow Block Walls

FLOOR CONSTRUCTION:

Block and Beam Floor

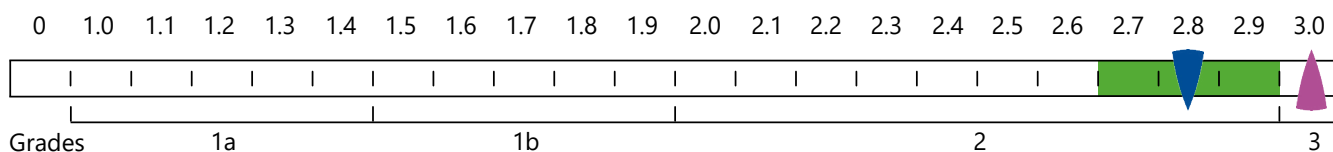
SITE:

Sloping

NWI SCALE

Waterproofing solutions can only achieve environmental Grades 1a, 1b or 2.

Refer to page 5 of the Newton Design Philosophy.



NWI Score when ventilation has not been included.

Ventilation, dehumidification or air conditioning is necessary; appropriate to intended use to achieve Grade 3 - BS 8102:2022.

This specification employs 1 form of waterproofing (Type A - Barrier Protection) to prevent ground water passing through the retaining wall on a sloping site to ensure that the desired internal environment is achieved. The success of the waterproofing is dependent on the void below the block and beam floor being free draining and the Type A barrier membrane being 100% effective, especially over the mortar joints of the block wall.



risk and potential success of specific waterproofing specifications. The NWI score is awarded by a panel of experienced waterproofing design specialists and reflects the chances of success of that specification. The scoring system works in conjunction with the British Standard for waterproofing, which defines the three types of internal environments as Grades 1a, 1b, 2 and 3.

SPECIFICATION

TYPE A APPLIED EXTERNALLY

Waterproof the structure with [Newton HydroBond System](#) providing barrier protection.

EXTERNAL DRAINAGE

The use of drainage membranes and drainage pipe are only recommended to sloping sites where the drainage medium are used to asset in the diversion around the structure of the water courses that were interrupted by the build. The drainage pipe should discharge to a point that is downhill of the property so that the water will always be moved safely by gravity.

NEWTON WATERPROOFING INDEX

The Newton Waterproofing Index (NWI) is a unique scoring system that accurately assesses the level of

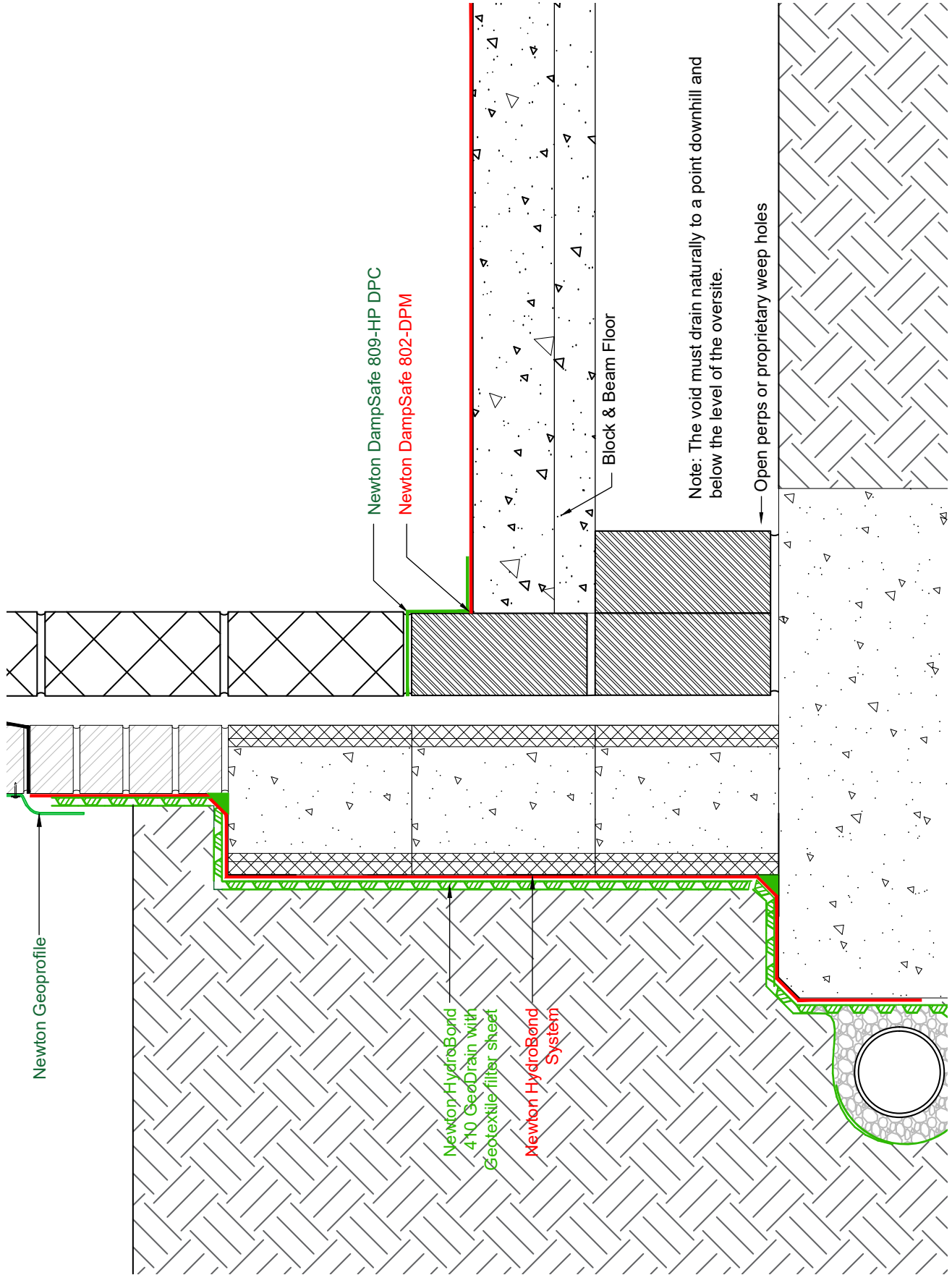
NOTES

The detailing of other building elements and termination details are available within the Newton Waterproofing specification library.

A-RATED INSURANCE

[Tailor made insurance policies available depending on the specialist contractor and specification.](#)

Any specification/advice provided is only valid if used with products supplied by John Newton and Company Ltd (trading as Newton Waterproofing Systems). Newton Waterproofing Systems reserve the right to update product literature at any time. Please always refer to our website for the latest versions.



Type A Waterproofing

A-18 SPECIFICATION OUTLINE

External Waterproofing of Hollow Block Walls

Specification	A-18
Description	Single waterproofing to Hollow Block wall. No gas protection.
Build	Hollow block walls, with reinforced concrete core, supported from strip foundations. Block and beam floor
NEWTON HYDROBOND SYSTEM	<p>The Newton HydroBond System provides a waterproof barrier to the external surface of any below ground structure.</p> <p>Newton 410 GeoDrain is a two-core drainage sheet with a fully bonded non-woven geotextile filter layer</p> <p>Use of Newton 410 GeoDrain, and indeed drainage generally, is not recommended to flat sites subject to rising levels of ground water.</p>