

Type A & C Waterproofing

AC-03 SPECIFICATION SHEET

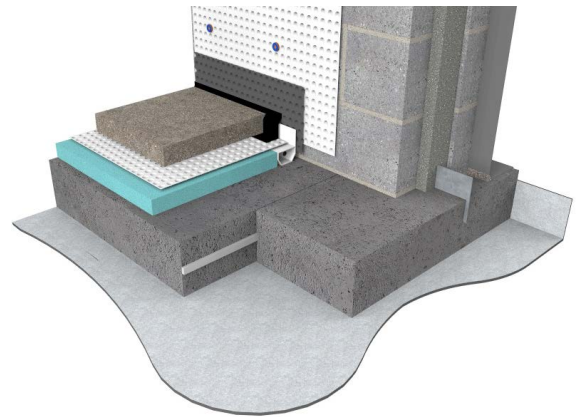
Combined Waterproofing of Block walls & RC raft

Rev 4.0 - 15 December 2022

BUILD

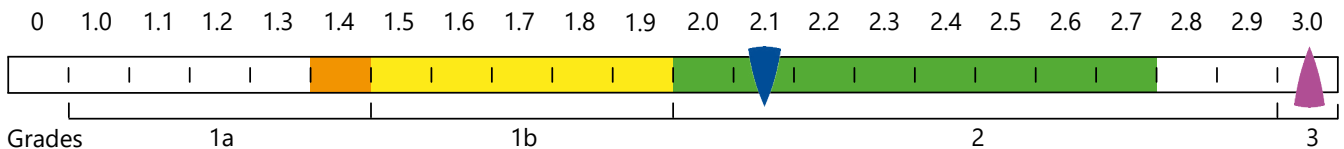
WALL CONSTRUCTION:
Double skin of block-work with RC core

FLOOR CONSTRUCTION:
Reinforced Concrete (RC) Raft



NWI SCALE

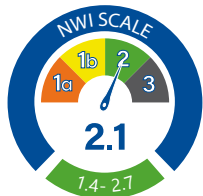
Waterproofing solutions can only achieve environmental Grades 1a, 1b or 2.
Refer to page 5 of the Newton Design Philosophy.



NWI Score when ventilation has not been included.

Ventilation, dehumidification or air conditioning is necessary; appropriate to intended use to achieve Grade 3 - BS 8102:2022.

This specification employs 2 forms of waterproofing (Type A - Barrier Protection) to prevent ground water passing through the structural elements of the building and (Type C - Drained Protection) to ensure that the desired internal environment is achieved. The success of the waterproofing is dependent on the Type A system being effective at controlling the quantity of water passing through the structure so as not to inundate the Type C. There is therefore also a reliance on the Type C system being designed and installed correctly.



NEWTON WATERPROOFING INDEX

The Newton Waterproofing Index (NWI) is a unique scoring system that accurately assesses the level of risk and potential success of specific waterproofing specifications. The NWI score is awarded by a panel of experienced waterproofing design specialists and reflects the chances of success of that specification. The scoring system works in conjunction with the British Standard for waterproofing, which defines the three types of internal environments as Grades 1a, 1b, 2 and 3.

SPECIFICATION

ANCILLARIES

Install appropriate Newton waterbars to all construction joints and service penetrations.

TYPE A APPLIED EXTERNALLY

Waterproof the structure with [Newton HydroBond System](#) consisting of pre-applied fully bonded membranes and fully bonded liquid applied membranes.

TYPE C INSTALLED INTERNALLY

Waterproof internally with [Newton CDM System](#) providing drained protection.

NOTES

The detailing of other building elements and termination details are available within the Newton Waterproofing specification library.

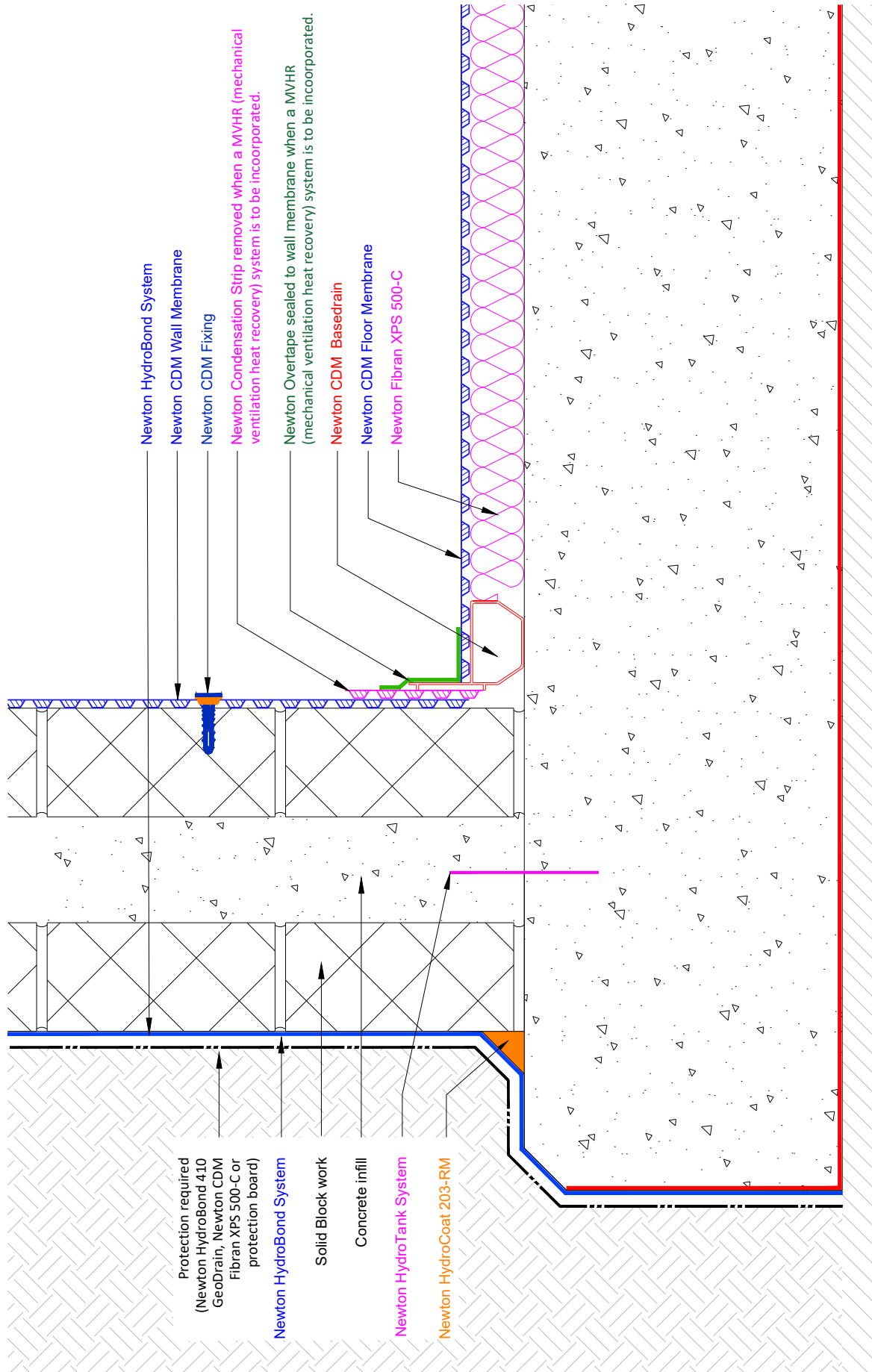
A-RATED INSURANCE

[Tailor made insurance policies available depending on the specialist contractor and specification.](#)

Any specification/advice provided is only valid if used with products supplied by John Newton and Company Ltd (trading as Newton Waterproofing Systems). Newton Waterproofing Systems reserve the right to update product literature at any time. Please always refer to our website for the latest versions.

AC-03

Combined Waterproofing of Block walls & RC raft



Type A & C Waterproofing

AC-03 SPECIFICATION OUTLINE

Combined Waterproofing of Block walls & RC raft

Specification	AC-03
Description	Combined waterproofing to blockwork structure. No gas protection.
Build	Block in two skins with reinforced concrete core walls, supported from strip foundations. Reinforced concrete raft designed by an engineer with maximum permissible through crack width of the concrete conforming to BS EN 1992-3:2006, tightness class 1. As required by BS 8102:2022 for grades 1b and higher.
NEWTON HYDROBOND SYSTEM	The Newton HydroBond System provides a complete and continuous waterproof barrier to the external surface of any below ground structure
NEWTON HYDROTANK SYSTEM	All construction joints (day joints, shrinkage joints, movement joints etc) should be waterproofed with Newton HydroTank System waterbars to limit water ingress thorough joints in the structure.
NEWTON CDM SYSTEM	Maintainable basement waterproofing solution ideal for new-build basements and refurbishment projects. Comprises four components: Cavity Drain Membranes, Drainage, Pumps and Control Systems. Complies with the British Standard for Waterproofing.