

Type C Waterproofing

C-01 SPECIFICATION SHEET

Internal Waterproofing of Block walls & RC slab

Rev 4.0 - 24 February 2023

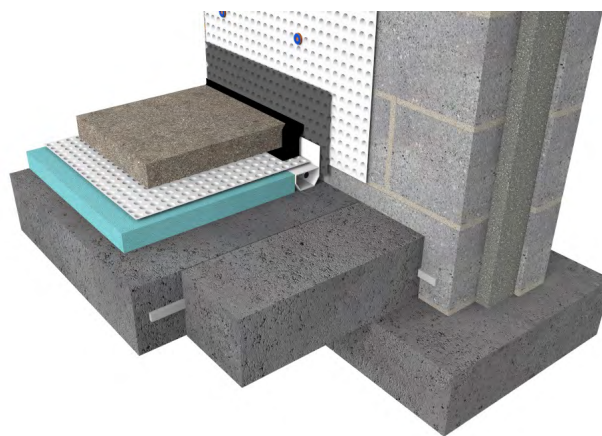
BUILD

WALL CONSTRUCTION:

Double skin of block-work with RC core

FLOOR CONSTRUCTION:

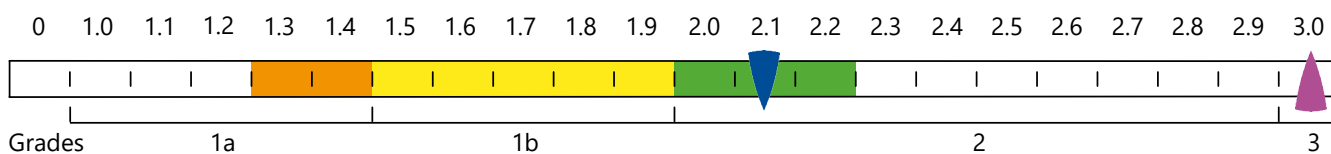
Reinforced Concrete (RC) Slab



NWI SCALE

Waterproofing solutions can only achieve environmental Grades 1a, 1b or 2.

Refer to page 5 of the Newton Design Philosophy.

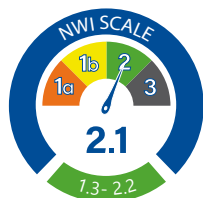


NWI Score when ventilation has not been included.



Ventilation, dehumidification or air conditioning is necessary; appropriate to intended use to achieve Grade 3 - BS 8102:2022.

This specification employs 1 form of waterproofing (Type C - Drained Protection) to provide the desired internal environment is achieved. The success of the waterproofing is dependent on the Type C system being installed correctly.



NOTES

The detailing of other building elements and termination details are available within the Newton Waterproofing specification library.

A-RATED INSURANCE

[Tailor made insurance policies available depending on the specialist contractor and specification.](#)

ANCILLARIES

Install appropriate Newton waterbars to all construction joints and service penetrations.

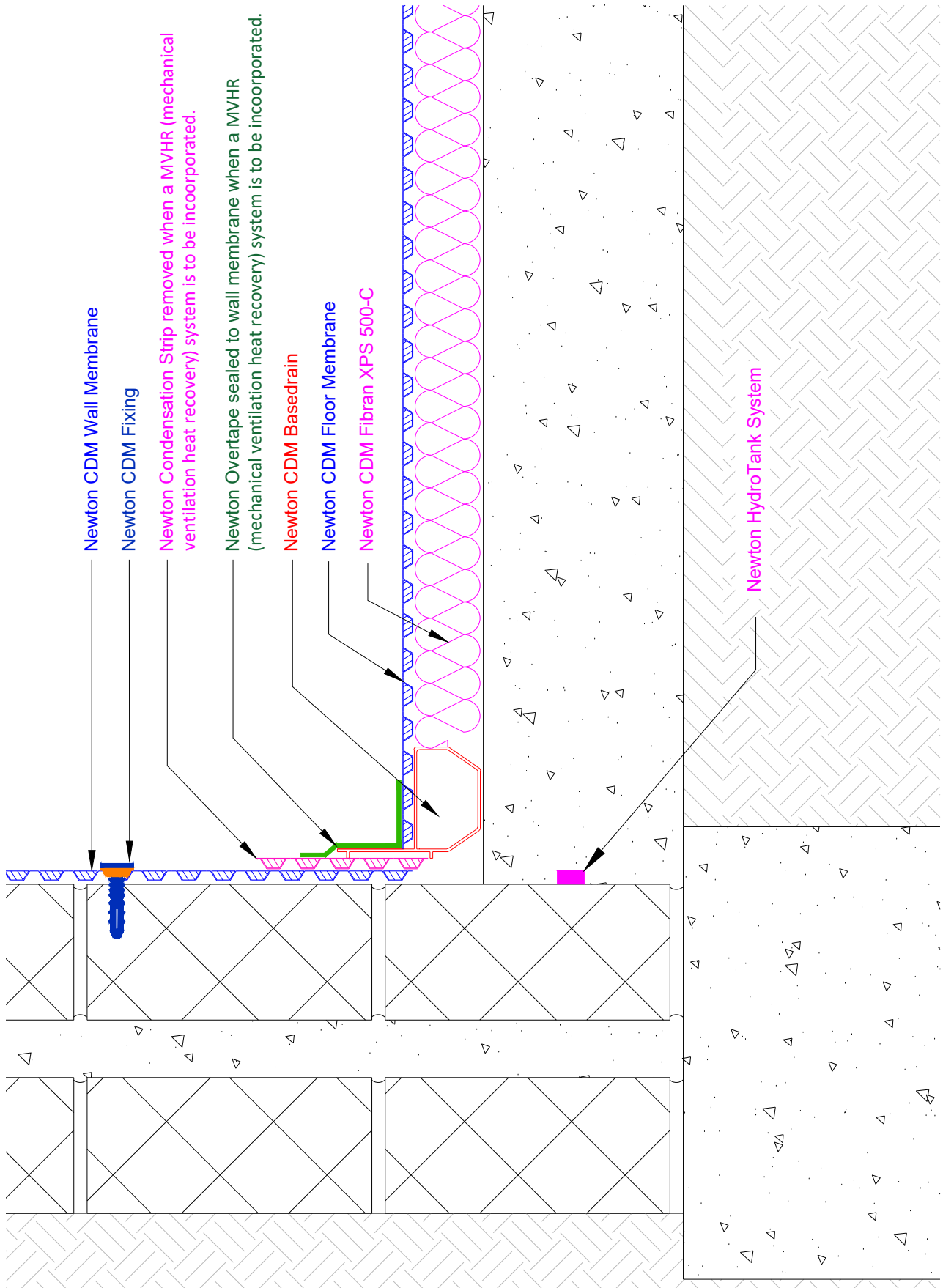
TYPE C INSTALLED INTERNALLY

Waterproof internally with [Newton CDM System](#) providing drained protection.

NEWTON WATERPROOFING INDEX

The Newton Waterproofing Index (NWI) is a unique scoring system that accurately assesses the level of risk and potential success of specific waterproofing specifications. The NWI score is awarded by a panel of experienced waterproofing design specialists and reflects the chances of success of that specification. The scoring system works in conjunction with the British Standard for waterproofing, which defines the three types of internal environments as Grades 1a, 1b, 2 and 3.

Any specification/advice provided is only valid if used with products supplied by John Newton and Company Ltd (trading as Newton Waterproofing Systems). Newton Waterproofing Systems reserve the right to update product literature at any time. Please always refer to our website for the latest versions.



Type C Waterproofing

C-01 SPECIFICATION OUTLINE

Internal Waterproofing of Block walls



| | |
|--------------------------------|--|
| Specification | C-01 |
| Description | Internal waterproofing to blockwork structure. No gas protection. |
| Build | Solid block walls, and an RC slab designed with flexural and through section crack widths limited to 0.2mm, and which conforms to BS EN 1992 |
| NEWTON HYDROTANK SYSTEM | All construction joints (day joints, shrinkage joints, movement joints etc) should be waterproofed with Newton HydroTank System waterbars to limit water ingress thorough joints in the structure. |
| NEWTON CDM SYSTEM | Maintainable basement waterproofing solution ideal for new-build basements and refurbishment projects. Comprises four components: Cavity Drain Membranes, Drainage, Pumps and Control Systems. Complies with the British Standard for Waterproofing. |