

# Type A Waterproofing

## E-A-01 SPECIFICATION SHEET

### Internal Waterproofing of Existing Structure

Rev 4.0 - 04 January 2023

#### BUILD

##### WALL CONSTRUCTION:

Existing brick

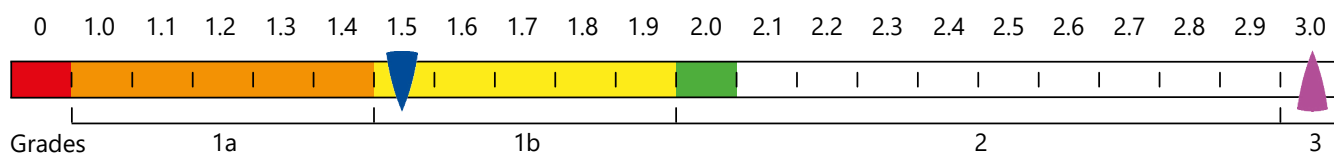
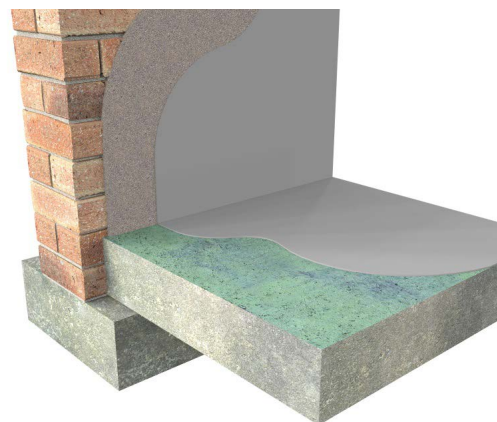
##### FLOOR CONSTRUCTION:

Existing Concrete Slab

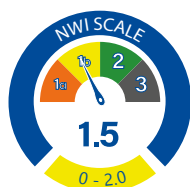
#### NWI SCALE

Waterproofing solutions can only achieve environmental Grades 1a, 1b or 2.

Refer to page 5 of the Newton Design Philosophy.



This specification employs 1 form of waterproofing (Type A - Barrier Protection) to prevent ground water passing through the structural elements of the building to ensure that the desired internal environment is achieved. The success of the waterproofing is dependent on the Type A system being effective especially over the mortar joints of the block wall and the wall/slab junction.



#### SPECIFICATION

##### TYPE A APPLIED INTERNALLY

Waterproof the structure with [Newton HydroCoat System](#) providing barrier protection.

#### NEWTON WATERPROOFING INDEX

The Newton Waterproofing Index (NWI) is a unique scoring system that accurately assesses the level of risk and potential success of specific waterproofing specifications. The NWI score is awarded by a panel of experienced waterproofing design specialists and reflects the chances of success of that specification. The scoring system works in conjunction with the British Standard for waterproofing, which defines the three types of internal environments as Grades 1a, 1b, 2 and 3.

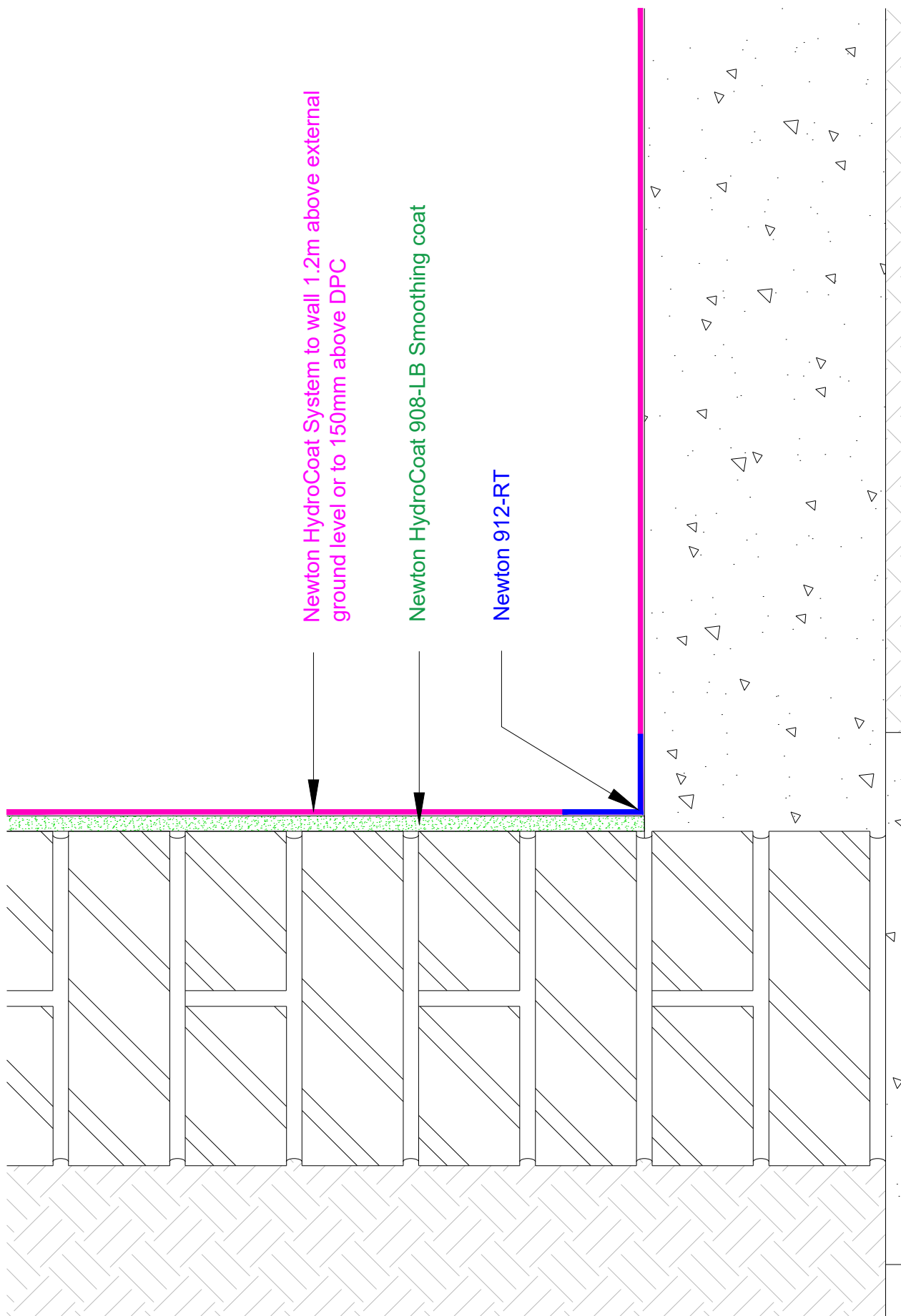
#### NOTES

To improve the NWI score and provide a grade 3 environment install [Newton CDM System](#) as per Newton Specification Sheet E-CA-04.

The detailing of other building elements and termination details are available within the Newton Waterproofing specification library.

#### A-RATED INSURANCE

[Tailor made insurance policies available depending on the specialist contractor and specification.](#)



# Type A Waterproofing

## E-A-01 OUTLINE SPECIFICATION

### Internal Waterproofing of Existing Structure

**Specification****Description****E-A-01**

Combined waterproofing to existing concrete slab and Existing Brick wall structure. No gas protection.

**Build****NEWTON HYDROCOAT SYSTEM**

Existing walls and slab to comply with section 10.1 of the BS8102:2022.

When your project requires an internally applied membrane to resist water ingress, Newton HydroCoat presents a solution.