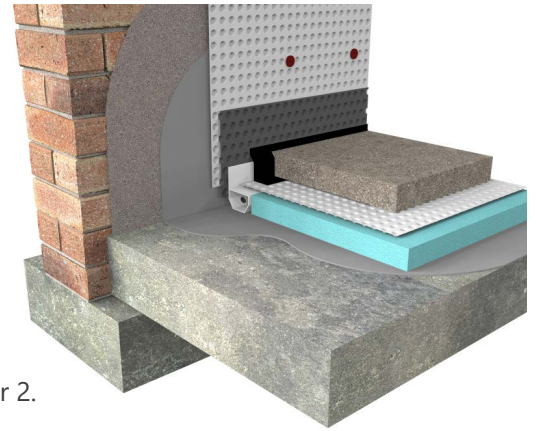


Type A & C Waterproofing

E-CA-04 SPECIFICATION SHEET

Internal Waterproofing of Existing Brick Wall

Rev 4.0 -30 November 2022



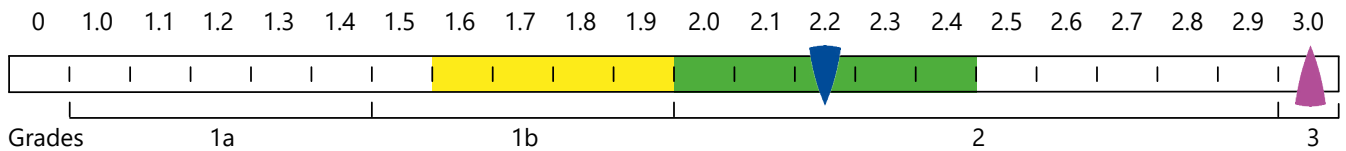
BUILD

WALL CONSTRUCTION:
Existing Brick

FLOOR CONSTRUCTION:
Existing slab

NWI SCALE

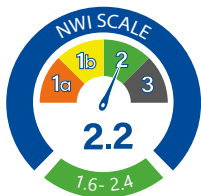
Waterproofing solutions can only achieve environmental Grades 1a, 1b or 2. Refer to page 5 of the Newton Design Philosophy



NWI Score when ventilation has not been included.

Ventilation, dehumidification or air conditioning is necessary; appropriate to intended use to achieve Grade 3 - BS 8102:2022.

This specification employs 2 forms of waterproofing (Type A - Barrier Protection) to limit ground water ingressing behind the (Type C - Drained Protection) to ensure that the desired internal environment is achieved. The effectiveness of the waterproofing is dependent on the Type A systems being effective, especially at the mortar joints.



The scoring system works in conjunction with the British Standard for waterproofing, which defines the three types of internal environments as Grades 1a, 1b, 2 and 3.

NOTES

The detailing of other building elements and termination details are available within the Newton Waterproofing specification library.

SPECIFICATION

TYPE A APPLIED INTERNALLY

Waterproof the structure with [Newton HydroCoat System](#) providing barrier protection.

TYPE C INSTALLED INTERNALLY

Waterproof internally with [Newton CDM System](#) providing drained protection.

NEWTON WATERPROOFING INDEX

The Newton Waterproofing Index (NWI) is a unique scoring system that accurately assesses the level of risk and potential success of specific waterproofing specifications. The NWI score is awarded by a panel of experienced waterproofing design specialists and reflects the chances of success of that specification.

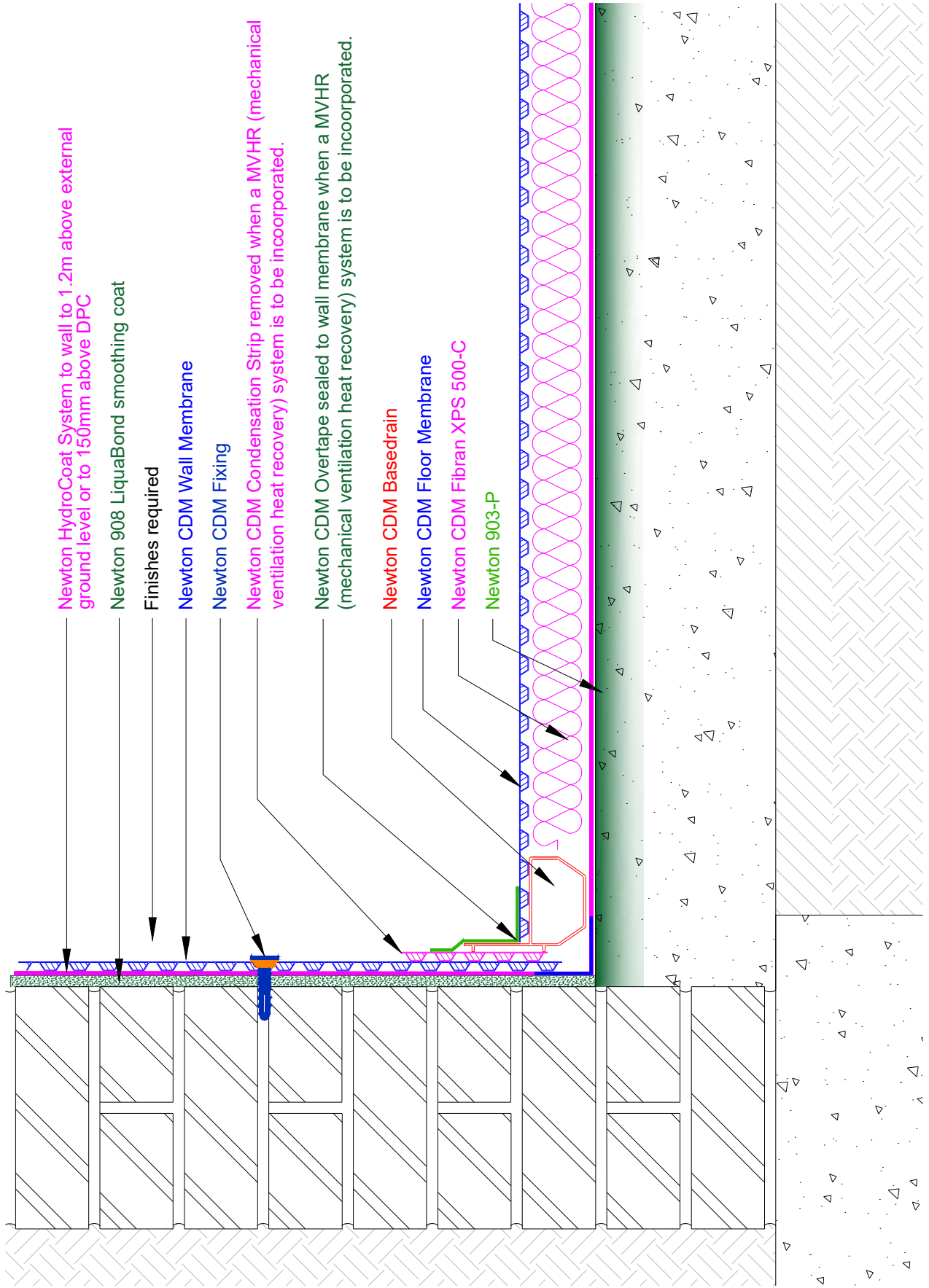
A-RATED INSURANCE

[Tailor made insurance policies available depending on the specialist contractor and specification.](#)

Any specification/advice provided is only valid if used with products supplied by John Newton and Company Ltd (trading as Newton Waterproofing Systems). Newton Waterproofing Systems reserve the right to update product literature at any time. Please always refer to our website for the latest versions.

E-CA-04

Internal Waterproofing of Existing Brick Wall



Type A & C Waterproofing

E-CA-04 SPECIFICATION OUTLINE

Internal Waterproofing of Existing Brick Wall



Specification	E-CA-04.
Description	Combined waterproofing to existing concrete slab and Existing Brick wall structure. No gas protection.
Build	Existing walls and slab to comply with section 10.1 of the BS8102:2022.
NEWTON HYDROCOAT SYSTEM	an internal Type A waterproofing solution for projects that requires an internally applied membrane to resist water ingress.
NEWTON CDM SYSTEM	Maintainable basement waterproofing solution ideal for new-build basements and refurbishment projects. Comprises four components: Cavity Drain Membranes, Drainage, Pumps and Control Systems. Complies with the British Standard for Waterproofing.

NEWTON WATERPROOFING SOLUTION - E-CA-04