

# THE NEWTON CLOUD

**JN**<sup>®</sup>  
**NEWTON**  
WATERPROOFING

## CLOUD DISTRIBUTOR GUIDE



# THE NEWTON CLOUD

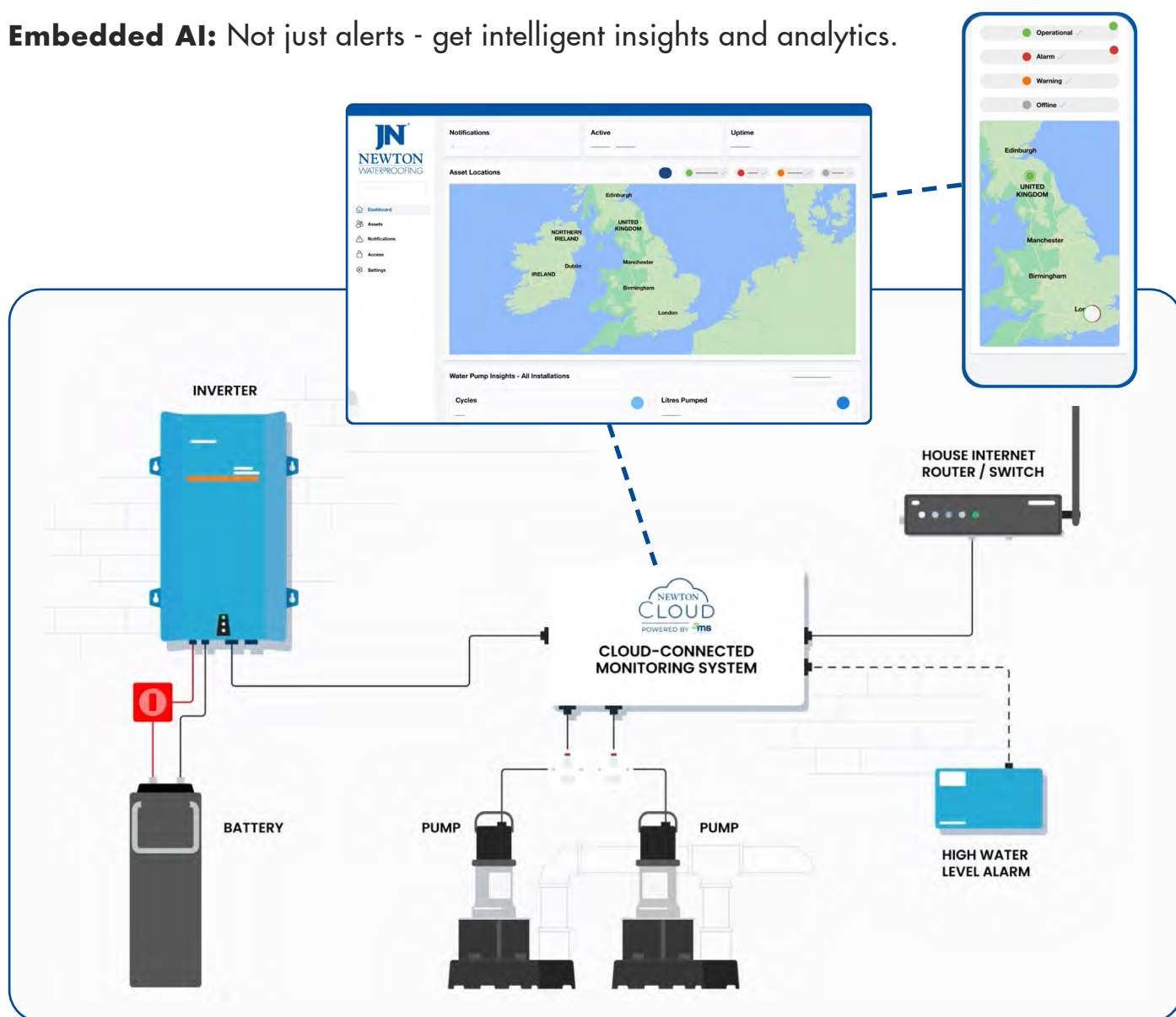
## Next-Generation Monitoring for Basement Pump Systems

**Beyond Basic Alarms:** A complete monitoring ecosystem including pumps, batteries, inverters and drainage channels. Not just a simple high-water level alarm.

**Software-Driven Platform:** Constantly evolving and developing with software updates.

**Comprehensive Protection:** Multiple monitoring points within the pumping and battery backup systems creates a complete safety net.

**Embedded AI:** Not just alerts - get intelligent insights and analytics.



### Head Office

Newton House, 17-20 Sovereign Way, Tonbridge, Kent, TN9 1RH  
Tel: 01732 360 095 | [info@newtonwaterproofing.co.uk](mailto:info@newtonwaterproofing.co.uk)

### Leeds Office

Unit 6b Gibraltar Island Rd, Hunslet, Leeds, LS10 1RJ  
Tel: 0113 521 6777 | [north@newtonwaterproofing.co.uk](mailto:north@newtonwaterproofing.co.uk)



# NEWTON CLOUD

POWERED BY **3ms**  
Green. Powerful. Solutions.

## Benefits of Becoming a Newton Cloud Distributor



### NEW REVENUE STREAMS

- Recurring annual licenses create a reliable income stream
- Enhanced customer lifetime value thanks to an ongoing relationship



### COMPETITIVE ADVANTAGE

- Position your business ahead of competitors with a forward-thinking and innovative approach
- Win clients who seek peace-of-mind and comprehensive protection



### RISK-FREE BUSINESS MODEL

- Consignment-based licensing means you only pay for what you use
- No upfront investment or inventory carrying costs required
- No minimum order volumes, and simply monthly billing



### ENHANCED RELATIONSHIPS

- Regular customer touchpoints through the monitoring system
- Natural opportunities for additional hardware sales
- Build trust with proactive servicing plans and communications

## Unique Features of the Cloud

### CHANNEL MONITORING

The only cloud-based pump system including monitoring for the water levels in the perimeter drainage channels.

### COMPLETE BATTERY INSIGHTS

Detailed battery health monitoring, specific to each individual system - a level of data not offered by any competitor system.

### ENVIRONMENTAL INTELLIGENCE

Weather integrations will monitor for weather alerts for forecast storms.

### HISTORICAL ANALYTICS

Embedded AI offers custom trend analysis of alarms, pump activity and overall system health.



# RELIABLE & PROFESSIONAL

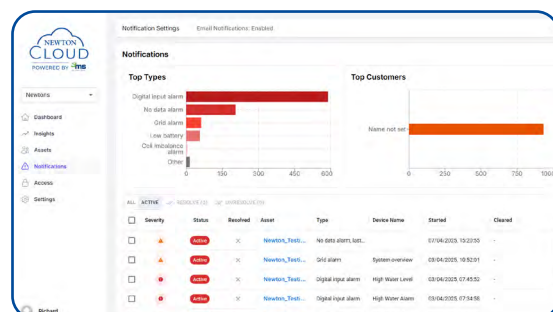
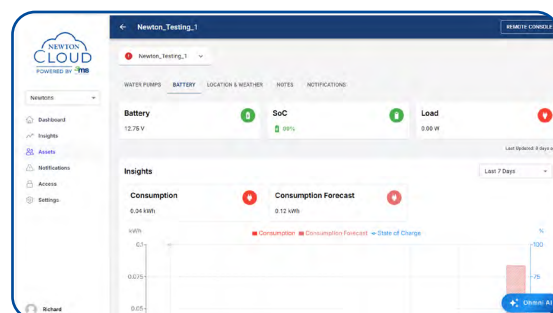
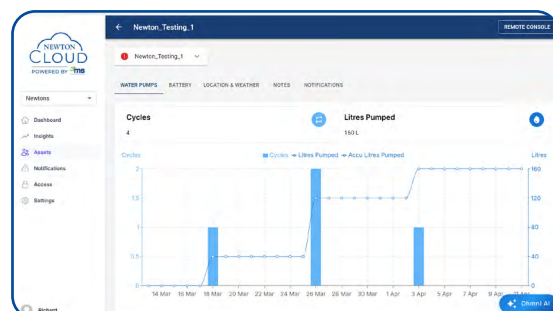
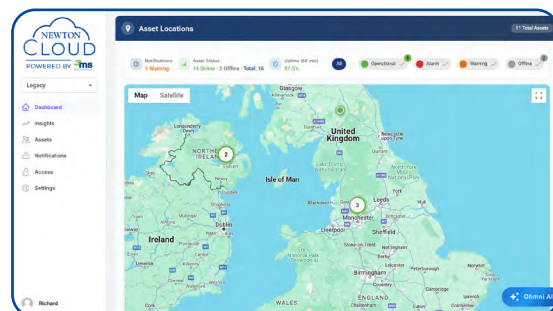
## How Will Newton Support Your Business?

### Personalised Onboarding Process:

- One-to-one induction session with a member of the Newton Cloud team
- Guided setup of your distributor account and your first installed system
- Hands-on training on the distributor portal and the end-user dashboard

### Ongoing Support Partnership:

- Check-ins with our dedicated team to ensure the success of your systems
- Technical assistance available
- Direct phone and email access to our trained team of Newton Cloud specialists



## Your Online Distributor Portal

As a Newton Cloud distributor, you will have free access to a comprehensive online dashboard with:

- Status overviews for all installed systems
- Alarm notifications and historical data
- Battery health monitoring
- Pump operation data
- Drainage channel status
- Weather alerts integration

### Head Office

Newton House, 17-20 Sovereign Way, Tonbridge, Kent, TN9 1RH  
Tel: 01732 360 095 | [info@newtonwaterproofing.co.uk](mailto:info@newtonwaterproofing.co.uk)

### Leeds Office

Unit 6b Gibraltar Island Rd, Hunslet, Leeds, LS10 1RJ  
Tel: 0113 521 6777 | [north@newtonwaterproofing.co.uk](mailto:north@newtonwaterproofing.co.uk)

# NEWTON CLOUD

POWERED BY **3ms**  
Green. Powerful. Solutions.

## AI Intelligence & Analytics

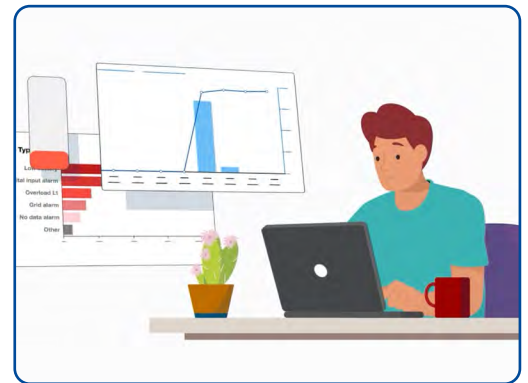
The Newton Cloud is provided with Ohmni AI as standard, an intelligent system interrogation tool.

Ohmni AI will quickly and efficiently access system-wide data as well as asset-specific information

As your distributor portal accumulates data, Ohmni will learn the patterns and trends of your installed systems and provide alerts for any operation outside of the usual performance conditions.

## Watch the Video

View our [Newton Cloud video](#).



## Got Questions?

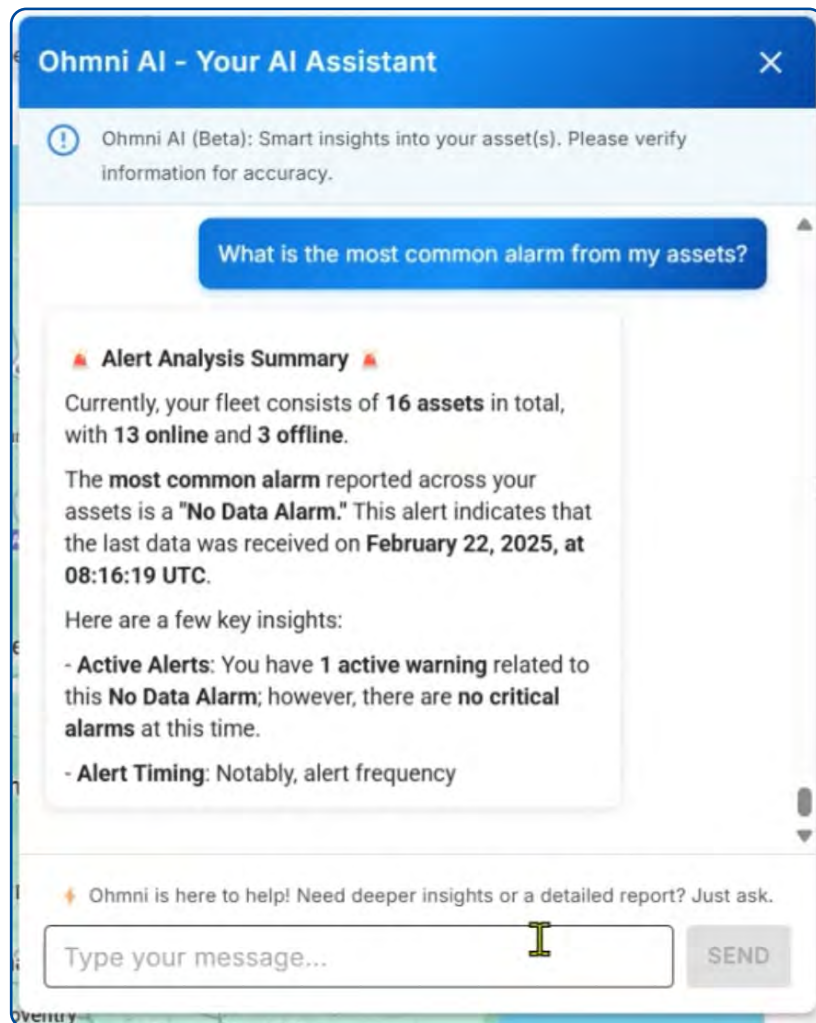
The expert team at Newton includes industry-qualified experts in waterproofing system design, including pump system specification and installation.

Discover peace of mind with the Newton Cloud on your new or existing Newton pump system - get in touch to find out about contractor training, product requirements, and more.

## Speak to the team:

**Website**

**Email**







**HEAD OFFICE**

Newton House, 17-19 Sovereign Way,  
Tonbridge, Kent, TN9 1RH

T: 01732 360 095

E: [tech@newtonwaterproofing.co.uk](mailto:tech@newtonwaterproofing.co.uk)

W: [www.newtonwaterproofing.co.uk](http://www.newtonwaterproofing.co.uk)

## Protecting Buildings Since 1848

**LEEDS OFFICE**

Unit 6b, Gibraltar Island Road, Old Mill  
Business Park, Hunslet, Leeds, LS10 1RJ

T: 0113 521 6777

E: [north@newtonwaterproofing.co.uk](mailto:north@newtonwaterproofing.co.uk)

